

General Information

Urbanized Area (UZA) Statistics - 2010 Census

Riverside-San Bernardino, CA
 545 **Square Miles**
 1,932,666 **Population**
 22 **Pop. Rank out of 498 UZAs**

Service Area Statistics

41 **Square Miles**
 166,785 **Population**

Service Consumption

188,061 **Annual Unlinked Trips (UPT)**

Service Supplied

368,853 **Annual Vehicle Revenue Miles (VRM)**
 29,897 **Annual Vehicle Revenue Hours (VRH)**

Database Information

NTDID: 90052

Reporter Type: Reduced Reporter

Financial Information

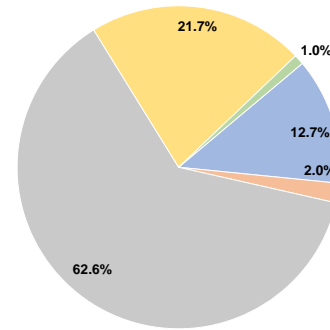
Sources of Operating Funds Expended

Fare Revenues	\$295,339	12.7%
Local Funds	\$45,600	2.0%
State Funds	\$1,457,248	62.6%
Federal Assistance	\$504,692	21.7%
Other Funds	\$23,373	1.0%
Total Operating Funds Expended	\$2,326,252	100.0%

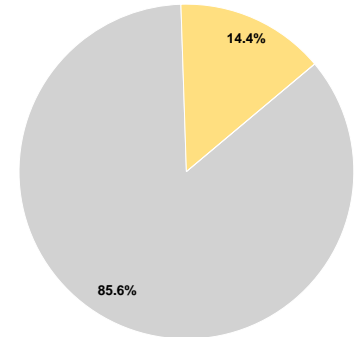
Sources of Capital Funds Expended

Fare Revenues	\$0	0.0%
Local Funds	\$0	0.0%
State Funds	\$1,235,292	85.6%
Federal Assistance	\$208,000	14.4%
Other Funds	\$0	0.0%
Total Capital Funds Expended	\$1,443,292	100.0%

Operating Funding Sources



Capital Funding Sources



Modal Characteristics

Operation Characteristics

Vehicles Operated at Maximum Service

Mode	Directly Operated	Purchased Transportation	Operating Expenses	Fare Revenues	Uses of Capital Funds	Annual Unlinked Trips	Annual Vehicle Revenue Miles	Annual Vehicle Revenue Hours	Average Fleet Age in Years ^a
Demand Response	-	9	\$1,197,411	\$162,529	\$1,443,292	58,089	195,419	15,338	6.5
Bus	-	6	\$1,111,926	\$132,810	\$0	129,972	173,434	14,559	3.0
Total	-	15	\$2,309,337	\$295,339	\$1,443,292	188,061	368,853	29,897	

Performance Measures

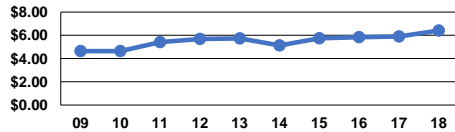
Service Efficiency

Mode	Operating Expenses per Vehicle Revenue Mile	Operating Expenses per Vehicle Revenue Hour
Demand Response	\$6.13	\$78.07
Bus	\$6.41	\$76.37
Total	\$6.26	\$77.24

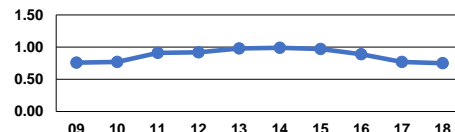
Service Effectiveness

Mode	Operating Expenses per Unlinked Passenger Trip	Unlinked Trips per Vehicle Revenue Mile	Unlinked Trips per Vehicle Revenue Hour
Demand Response	\$20.61	0.3	3.8
Bus	\$8.56	0.7	8.9
Total	\$12.28	0.5	6.3

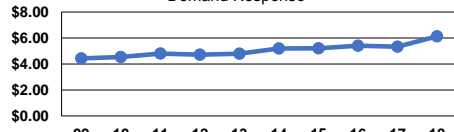
Operating Expense per Vehicle Revenue Mile: Bus



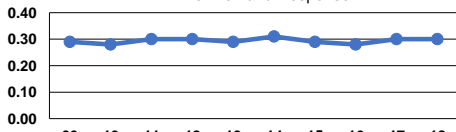
Unlinked Passenger Trips per Vehicle Revenue Mile: Bus



Operating Expense per Vehicle Revenue Mile: Demand Response



Unlinked Passenger Trips per Vehicle Revenue Mile: Demand Response



Notes:

^aDemand Response - Taxi (DT) and non-dedicated fleets do not report fleet age data.