

**General Information**

**Financial Information**

**Urbanized Area (UZA) Statistics - 2010 Census**

Thousand Oaks, CA  
86 **Square Miles**  
214,811 **Population**  
168 **Pop. Rank out of 498 UZAs**

**Service Area Statistics**

12 **Square Miles**  
36,828 **Population**

**Service Consumption**

50,714 **Annual Unlinked Trips (UPT)**

**Service Supplied**

84,231 **Annual Vehicle Revenue Miles (VRM)**  
5,780 **Annual Vehicle Revenue Hours (VRH)**

**Database Information**

NTDID: 90227

Reporter Type: Reduced Reporter

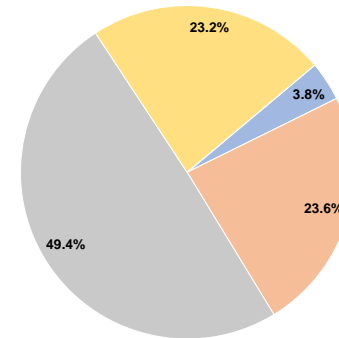
**Sources of Operating Funds Expended**

Fare Revenues	\$36,852	3.8%
Local Funds	\$228,144	23.6%
State Funds	\$478,271	49.4%
Federal Assistance	\$224,040	23.2%
Other Funds	\$0	0.0%
<b>Total Operating Funds Expended</b>	<b>\$967,307</b>	<b>100.0%</b>

**Sources of Capital Funds Expended**

Fare Revenues	\$0
Local Funds	\$0
State Funds	\$0
Federal Assistance	\$0
Other Funds	\$0
<b>Total Capital Funds Expended</b>	<b>\$0</b>

**Operating Funding Sources**



**Modal Characteristics**

**Operation Characteristics**

**Vehicles Operated at Maximum Service**

Mode	Directly Operated	Purchased Transportation	Operating Expenses	Fare Revenues	Uses of Capital Funds	Annual Unlinked Trips	Annual Vehicle Revenue Miles	Annual Vehicle Revenue Hours	Average Fleet Age in Years <sup>a</sup>
Bus	-	2	\$874,896	\$36,852	\$0	50,714	84,231	5,780	5.5
<b>Total</b>	-	<b>2</b>	<b>\$874,896</b>	<b>\$36,852</b>	<b>\$0</b>	<b>50,714</b>	<b>84,231</b>	<b>5,780</b>	

**Performance Measures**

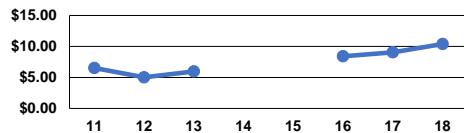
**Service Efficiency**

Mode	Operating Expenses per Vehicle Revenue Mile	Operating Expenses per Vehicle Revenue Hour
Bus	\$10.39	\$151.37
<b>Total</b>	<b>\$10.39</b>	<b>\$151.37</b>

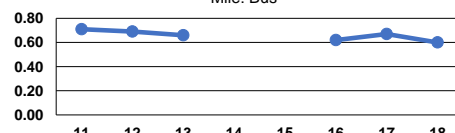
**Service Effectiveness**

Mode	Operating Expenses per Unlinked Passenger Trip	Unlinked Trips per Vehicle Revenue Mile	Unlinked Trips per Vehicle Revenue Hour
Bus	\$17.25	0.6	8.8
<b>Total</b>	<b>\$17.25</b>	<b>0.6</b>	<b>8.8</b>

Operating Expense per Vehicle Revenue Mile: Bus



Unlinked Passenger Trips per Vehicle Revenue Mile: Bus



**Notes:**

<sup>a</sup>Demand Response - Taxi (DT) and non-dedicated fleets do not report fleet age data.