

Susanville Indian Rancheria

2018 Annual Agency Profile

General Information

Federally Recognized Tribal Statistical Areas

Susanville Indian Rancheria and Off-Reservation Trust Land, CA

Service Consumption

1,226 Annual Unlinked Trips (UPT)

Service Supplied

65,207 Annual Vehicle Revenue Miles (VRM)

1,607 Annual Vehicle Revenue Hours (VRH)

Database Information

NTDID: 99256

Reporter Type: Tribal Reporter

Financial Information

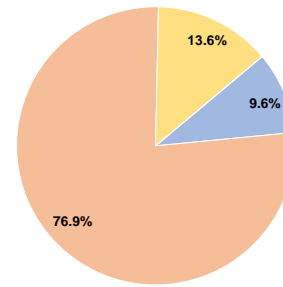
Sources of Operating Funds Expended

Fare Revenues	\$11,698	9.6%
Local Funds	\$93,856	76.9%
State Funds	\$0	0.0%
Federal Assistance	\$16,555	13.6%
Other Funds	\$0	0.0%
Total Operating Funds Expended	\$122,109	100.0%

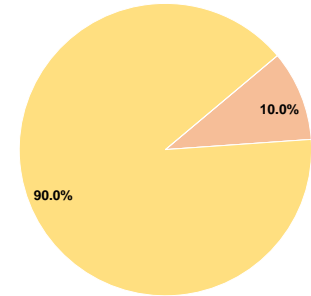
Sources of Capital Funds Expended

Fare Revenues	\$0	0.0%
Local Funds	\$4,679	10.0%
State Funds	\$0	0.0%
Federal Assistance	\$42,105	90.0%
Other Funds	\$0	0.0%
Total Capital Funds Expended	\$46,784	100.0%

Operating Funding Sources



Capital Funding Sources



Modal Characteristics

Operation Characteristics

Vehicles Operated at Maximum Service

Mode	Directly Operated	Purchased Transportation	Operating Expenses	Fare Revenues	Uses of Capital Funds	Annual Unlinked Trips	Annual Vehicle Revenue Miles	Annual Vehicle Revenue Hours	Average Fleet Age in Years ^a
Demand Response	1	-	\$17,717	\$1,162	\$46,784	99	14,130	284	0.0
Bus	3	-	\$104,392	\$10,536	\$0	1,127	51,077	1,323	5.0
Total	4	-	\$122,109	\$11,698	\$46,784	1,226	65,207	1,607	

Performance Measures

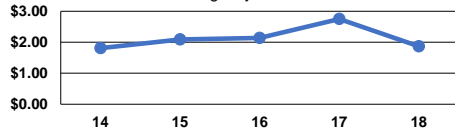
Service Efficiency

Mode	Operating Expenses per Vehicle Revenue Mile	Operating Expenses per Vehicle Revenue Hour
Demand Response	\$1.25	\$62.38
Bus	\$2.04	\$78.91
Total	\$1.87	\$75.99

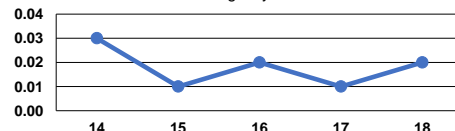
Service Effectiveness

Mode	Operating Expenses per Unlinked Passenger Trip	Unlinked Trips per Vehicle Revenue Mile	Unlinked Trips per Vehicle Revenue Hour
Demand Response	\$178.96	0.0	0.3
Bus	\$92.63	0.0	0.9
Total	\$99.60	0.0	0.8

Operating Expense per Vehicle Revenue Mile: Agency Total



Unlinked Passenger Trips per Vehicle Revenue Mile: Agency Total



Notes:

^aDemand Response - Taxi (DT) and non-dedicated fleets do not report fleet age data.