

General Information

Federally Recognized Tribal Statistical Areas

Fort Hall Reservation and Off-Reservation Trust Land, ID

Service Consumption

29,472 Annual Unlinked Trips (UPT)

Service Supplied

201,697 Annual Vehicle Revenue Miles (VRM)

14,400 Annual Vehicle Revenue Hours (VRH)

Database Information

NTDID: 00031

Reporter Type: Tribal Reporter

Financial Information

Sources of Operating Funds Expended

Fare Revenues	\$29,472	5.8%
Local Funds	\$198,801	39.2%
State Funds	\$0	0.0%
Federal Assistance	\$278,652	55.0%
Other Funds	\$0	0.0%

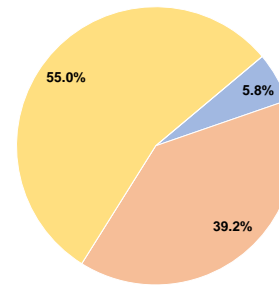
Total Operating Funds Expended \$506,925 100.0%

Sources of Capital Funds Expended

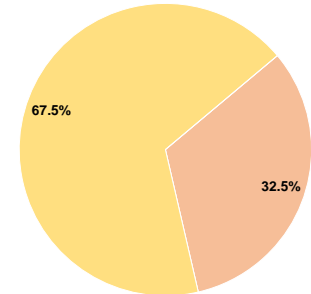
Fare Revenues	\$0	0.0%
Local Funds	\$91,000	32.5%
State Funds	\$0	0.0%
Federal Assistance	\$189,000	67.5%
Other Funds	\$0	0.0%

Total Capital Funds Expended \$280,000 100.0%

Operating Funding Sources



Capital Funding Sources



Modal Characteristics

Operation Characteristics

Vehicles Operated at Maximum Service

Mode	Directly Operated	Purchased Transportation	Operating Expenses	Fare Revenues	Uses of Capital Funds	Annual Unlinked Trips	Annual Vehicle Revenue Miles	Annual Vehicle Revenue Hours	Average Fleet Age in Years ^a
Bus	21	-	\$506,925	\$29,472	\$280,000	29,472	201,697	14,400	10.5
Total	21	-	\$506,925	\$29,472	\$280,000	29,472	201,697	14,400	

Performance Measures

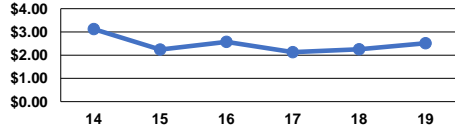
Service Efficiency

Mode	Operating Expenses per Vehicle Revenue Mile	Operating Expenses per Vehicle Revenue Hour
Bus	\$2.51	\$35.20
Total	\$2.51	\$35.20

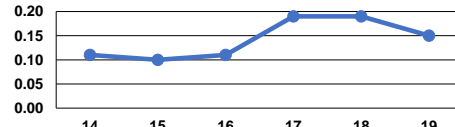
Service Effectiveness

Mode	Operating Expenses per Unlinked Passenger Trip	Unlinked Trips per Vehicle Revenue Mile	Unlinked Trips per Vehicle Revenue Hour
Bus	\$17.20	0.1	2.0
Total	\$17.20	0.1	2.0

Operating Expense per Vehicle Revenue Mile: Agency Total



Unlinked Passenger Trips per Vehicle Revenue Mile: Agency Total



Notes:

^aDemand Response - Taxi (DT) and non-dedicated fleets do not report fleet age data.