

General Information

Urbanized Area (UZA) Statistics - 2010 Census

Lewiston, ID-WA

28 **Square Miles**
51,924 **Population**
483 **Pop. Rank out of 498 UZAs**

Service Area Statistics

20 **Square Miles**
21,888 **Population**

Service Consumption

104,440 **Annual Unlinked Trips (UPT)**

Service Supplied

335,792 **Annual Vehicle Revenue Miles (VRM)**
17,690 **Annual Vehicle Revenue Hours (VRH)**

Database Information

NTDID: 00051

Reporter Type: Reduced Reporter

Financial Information

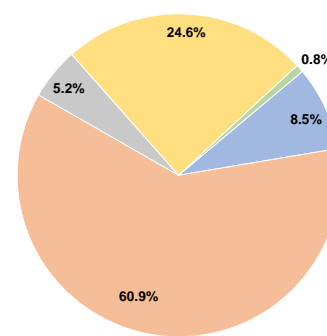
Sources of Operating Funds Expended

Fare Revenues	\$110,625	8.5%
Local Funds	\$795,821	60.9%
State Funds	\$67,776	5.2%
Federal Assistance	\$321,812	24.6%
Other Funds	\$10,100	0.8%
Total Operating Funds Expended	\$1,306,134	100.0%

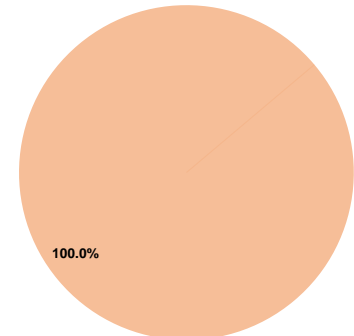
Sources of Capital Funds Expended

Fare Revenues	\$0	0.0%
Local Funds	\$292,659	100.0%
State Funds	\$0	0.0%
Federal Assistance	\$0	0.0%
Other Funds	\$0	0.0%
Total Capital Funds Expended	\$292,659	100.0%

Operating Funding Sources



Capital Funding Sources



Modal Characteristics

Operation Characteristics

Vehicles Operated at Maximum Service

Mode	Directly Operated	Purchased Transportation	Operating Expenses	Fare Revenues	Uses of Capital Funds	Annual Unlinked Trips	Annual Vehicle Revenue Miles	Annual Vehicle Revenue Hours	Average Fleet Age in Years ^a
Demand Response	2	-	\$236,748	\$7,241	\$0	8,172	40,102	3,881	6.7
Bus	3	-	\$1,000,264	\$21,404	\$191,309	67,806	161,937	10,247	4.5
Vanpool	9	-	\$69,122	\$81,980	\$101,350	28,462	133,753	3,562	5.4
Total	14	-	\$1,306,134	\$110,625	\$292,659	104,440	335,792	17,690	

Performance Measures

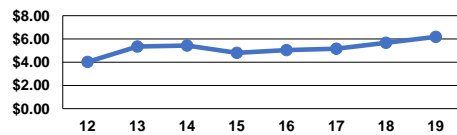
Service Efficiency

Mode	Operating Expenses per Vehicle Revenue Mile	Operating Expenses per Vehicle Revenue Hour
Demand Response	\$5.90	\$61.00
Bus	\$6.18	\$97.62
Vanpool	\$0.52	\$19.41
Total	\$3.89	\$73.83

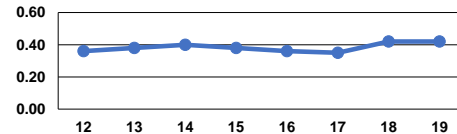
Service Effectiveness

Mode	Operating Expenses per Unlinked Passenger Trip	Unlinked Trips per Vehicle Revenue Mile	Unlinked Trips per Vehicle Revenue Hour
Demand Response	\$28.97	0.2	2.1
Bus	\$14.75	0.4	6.6
Vanpool	\$2.43	0.2	8.0
Total	\$12.51	0.3	5.9

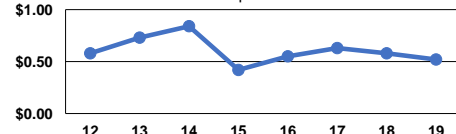
Operating Expense per Vehicle Revenue Mile: Bus



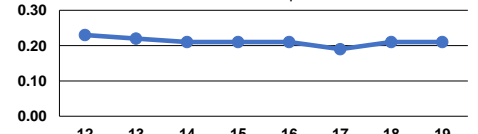
Unlinked Passenger Trips per Vehicle Revenue Mile: Bus



Operating Expense per Vehicle Revenue Mile: Vanpool



Unlinked Passenger Trips per Vehicle Revenue Mile: Vanpool



Notes:

^aDemand Response - Taxi (DT) and non-dedicated fleets do not report fleet age data.