

**General Information**

**Federally Recognized Tribal Statistical Areas**

Squaxin Island Reservation and Off-Reservation Trust Land, WA

**Service Consumption**

16,240 Annual Unlinked Trips (UPT)

**Service Supplied**

41,988 Annual Vehicle Revenue Miles (VRM)

2,795 Annual Vehicle Revenue Hours (VRH)

**Database Information**

NTDID: 00103

Reporter Type: Tribal Reporter

**Financial Information**

**Sources of Operating Funds Expended**

Fare Revenues	\$0	0.0%
Local Funds	\$43,364	16.6%
State Funds	\$0	0.0%
Federal Assistance	\$217,302	83.4%
Other Funds	\$0	0.0%

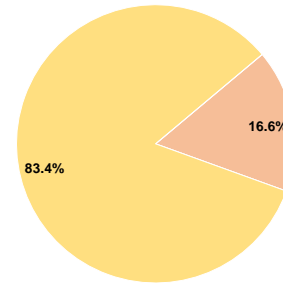
**Total Operating Funds Expended \$260,666 100.0%**

**Sources of Capital Funds Expended**

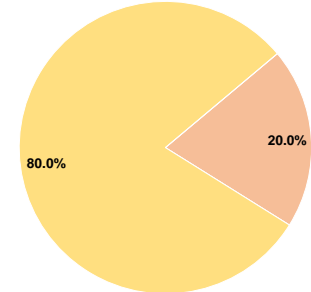
Fare Revenues	\$0	0.0%
Local Funds	\$14,239	20.0%
State Funds	\$0	0.0%
Federal Assistance	\$56,958	80.0%
Other Funds	\$0	0.0%

**Total Capital Funds Expended \$71,197 100.0%**

**Operating Funding Sources**



**Capital Funding Sources**



**Modal Characteristics**

**Operation Characteristics**

**Vehicles Operated at Maximum Service**

Mode	Directly Operated	Purchased Transportation	Operating Expenses	Fare Revenues	Uses of Capital Funds	Annual Unlinked Trips	Annual Vehicle Revenue Miles	Annual Vehicle Revenue Hours	Average Fleet Age in Years <sup>a</sup>
Bus	4	-	\$260,666	\$0	\$71,197	16,240	41,988	2,795	5.5
<b>Total</b>	<b>4</b>	<b>-</b>	<b>\$260,666</b>	<b>\$0</b>	<b>\$71,197</b>	<b>16,240</b>	<b>41,988</b>	<b>2,795</b>	

**Performance Measures**

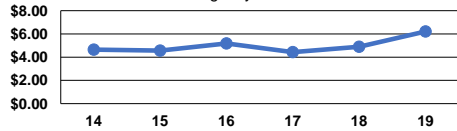
**Service Efficiency**

Mode	Operating Expenses per Vehicle Revenue Mile	Operating Expenses per Vehicle Revenue Hour
Bus	\$6.21	\$93.26
<b>Total</b>	<b>\$6.21</b>	<b>\$93.26</b>

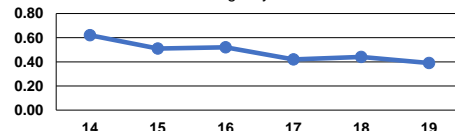
**Service Effectiveness**

Mode	Operating Expenses per Unlinked Passenger Trip	Unlinked Trips per Vehicle Revenue Mile	Unlinked Trips per Vehicle Revenue Hour
Bus	\$16.05	0.4	5.8
<b>Total</b>	<b>\$16.05</b>	<b>0.4</b>	<b>5.8</b>

Operating Expense per Vehicle Revenue Mile: Agency Total



Unlinked Passenger Trips per Vehicle Revenue Mile: Agency Total



**Notes:**

<sup>a</sup>Demand Response - Taxi (DT) and non-dedicated fleets do not report fleet age data.