

General Information

Urbanized Area (UZA) Statistics - 2010 Census

Portsmouth, NH-ME
 93 **Square Miles**
 88,200 **Population**
 329 **Pop. Rank out of 498 UZAs**

Other UZAs Served

0 Maine Non-UZA, 177 Portland, ME, 331 Dover-Rochester, NH-ME

Service Area Statistics

651 **Square Miles**
 202,343 **Population**

Service Consumption

144,819 **Annual Unlinked Trips (UPT)**

Service Supplied

463,377 **Annual Vehicle Revenue Miles (VRM)**
 33,753 **Annual Vehicle Revenue Hours (VRH)**

Database Information

NTDID: 10099
 Reporter Type: Reduced Reporter

Financial Information

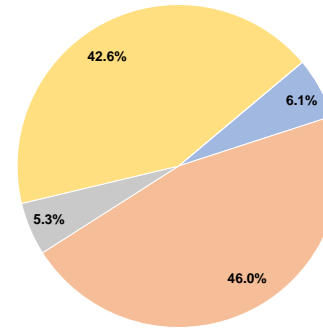
Sources of Operating Funds Expended

Fare Revenues	\$178,910	6.1%
Local Funds	\$1,346,816	46.0%
State Funds	\$155,454	5.3%
Federal Assistance	\$1,248,590	42.6%
Other Funds	\$0	0.0%
Total Operating Funds Expended	\$2,929,770	100.0%

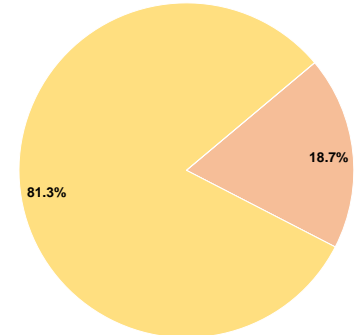
Sources of Capital Funds Expended

Fare Revenues	\$0	0.0%
Local Funds	\$16,966	18.7%
State Funds	\$0	0.0%
Federal Assistance	\$73,857	81.3%
Other Funds	\$0	0.0%
Total Capital Funds Expended	\$90,823	100.0%

Operating Funding Sources



Capital Funding Sources



Modal Characteristics

Operation Characteristics

Vehicles Operated at Maximum Service

Mode	Directly Operated	Purchased Transportation	Operating Expenses	Fare Revenues	Uses of Capital Funds	Annual Unlinked Trips	Annual Vehicle Revenue Miles	Annual Vehicle Revenue Hours	Average Fleet Age in Years ^a
Demand Response	19	-	\$2,929,770	\$178,910	\$90,823	144,819	463,377	33,753	8.7
Total	19	-	\$2,929,770	\$178,910	\$90,823	144,819	463,377	33,753	

Performance Measures

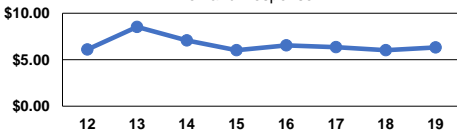
Service Efficiency

Mode	Operating Expenses per Vehicle Revenue Mile	Operating Expenses per Vehicle Revenue Hour
Demand Response	\$6.32	\$86.80
Total	\$6.32	\$86.80

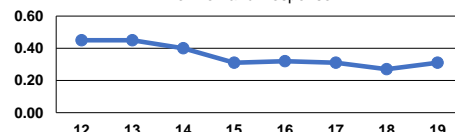
Service Effectiveness

Mode	Operating Expenses per Unlinked Passenger Trip	Unlinked Trips per Vehicle Revenue Mile	Unlinked Trips per Vehicle Revenue Hour
Demand Response	\$20.23	0.3	4.3
Total	\$20.23	0.3	4.3

Operating Expense per Vehicle Revenue Mile: Demand Response



Unlinked Passenger Trips per Vehicle Revenue Mile: Demand Response



Notes:

^aDemand Response - Taxi (DT) and non-dedicated fleets do not report fleet age data.