

Town of Monroe dba Monroe Dial A Bus

2019 Annual Agency Profile

General Information

Urbanized Area (UZA) Statistics - 2010 Census

Poughkeepsie-Newburgh, NY-NJ
327 **Square Miles**
423,566 **Population**
89 **Pop. Rank out of 498 UZAs**

Service Area Statistics

20 **Square Miles**
19,791 **Population**

Service Consumption

19,504 **Annual Unlinked Trips (UPT)**

Service Supplied

77,740 **Annual Vehicle Revenue Miles (VRM)**
9,110 **Annual Vehicle Revenue Hours (VRH)**

Database Information

NTDID: 20183

Reporter Type: Reduced Reporter

Financial Information

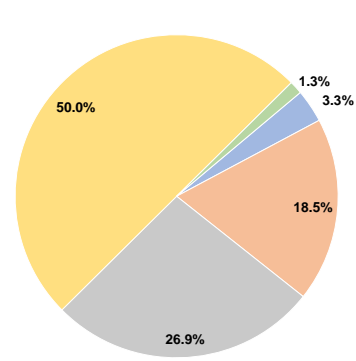
Sources of Operating Funds Expended

Fare Revenues	\$21,644	3.3%
Local Funds	\$120,168	18.5%
State Funds	\$175,280	26.9%
Federal Assistance	\$325,645	50.0%
Other Funds	\$8,553	1.3%
Total Operating Funds Expended	\$651,290	100.0%

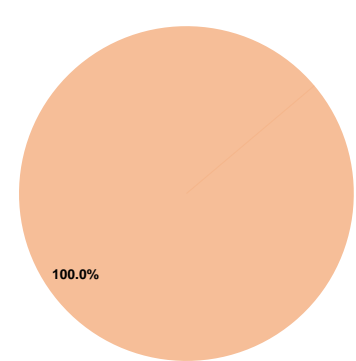
Sources of Capital Funds Expended

Fare Revenues	\$0	0.0%
Local Funds	\$43,270	100.0%
State Funds	\$0	0.0%
Federal Assistance	\$0	0.0%
Other Funds	\$0	0.0%
Total Capital Funds Expended	\$43,270	100.0%

Operating Funding Sources



Capital Funding Sources



Modal Characteristics

Operation Characteristics

Vehicles Operated at Maximum Service

Mode	Directly Operated	Purchased Transportation	Operating Expenses	Fare Revenues	Uses of Capital Funds	Annual Unlinked Trips	Annual Vehicle Revenue Miles	Annual Vehicle Revenue Hours	Average Fleet Age in Years ^a
Demand Response	5	-	\$651,290	\$21,644	\$43,270	19,504	77,740	9,110	0.9
Total	5	-	\$651,290	\$21,644	\$43,270	19,504	77,740	9,110	

Performance Measures

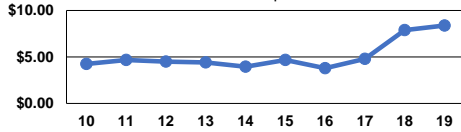
Service Efficiency

Mode	Operating Expenses per Vehicle Revenue Mile	Operating Expenses per Vehicle Revenue Hour
Demand Response	\$8.38	\$71.49
Total	\$8.38	\$71.49

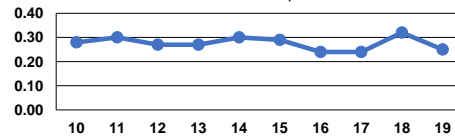
Service Effectiveness

Mode	Operating Expenses per Unlinked Passenger Trip	Unlinked Trips per Vehicle Revenue Mile	Unlinked Trips per Vehicle Revenue Hour
Demand Response	\$33.39	0.3	2.1
Total	\$33.39	0.3	2.1

Operating Expense per Vehicle Revenue Mile: Demand Response



Unlinked Passenger Trips per Vehicle Revenue Mile: Demand Response



Notes:

^aDemand Response - Taxi (DT) and non-dedicated fleets do not report fleet age data.