

## General Information

**Federally Recognized Tribal Statistical Areas**  
Allegany Reservation, NY - Oil Springs Reservation, NY -  
Cattaraugus Reservation, NY

**Service Consumption**  
15,962 Annual Unlinked Trips (UPT)

**Service Supplied**  
228,698 Annual Vehicle Revenue Miles (VRM)  
7,313 Annual Vehicle Revenue Hours (VRH)

**Database Information**  
NTDID: 22929  
Reporter Type: Tribal Reporter

## Financial Information

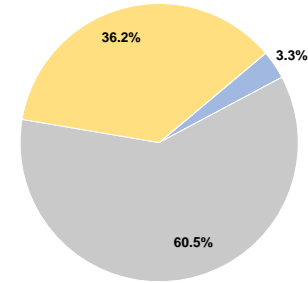
**Sources of Operating Funds Expended**

Fare Revenues	\$19,981	3.3%
Local Funds	\$0	0.0%
State Funds	\$362,968	60.5%
Federal Assistance	\$217,444	36.2%
Other Funds	\$0	0.0%
<b>Total Operating Funds Expended</b>	<b>\$600,393</b>	<b>100.0%</b>

**Sources of Capital Funds Expended**

Fare Revenues	\$0
Local Funds	\$0
State Funds	\$0
Federal Assistance	\$0
Other Funds	\$0
<b>Total Capital Funds Expended</b>	<b>\$0</b>

**Operating Funding Sources**



## Modal Characteristics

### Operation Characteristics

#### Vehicles Operated at Maximum Service

Mode	Directly Operated	Purchased Transportation	Operating Expenses	Fare Revenues	Uses of Capital Funds	Annual Unlinked Trips	Annual Vehicle Revenue Miles	Annual Vehicle Revenue Hours	Average Fleet Age in Years <sup>a</sup>
Bus	-	2	\$600,393	\$19,981	\$0	15,962	228,698	7,313	2.0
<b>Total</b>	<b>-</b>	<b>2</b>	<b>\$600,393</b>	<b>\$19,981</b>	<b>\$0</b>	<b>15,962</b>	<b>228,698</b>	<b>7,313</b>	

### Performance Measures

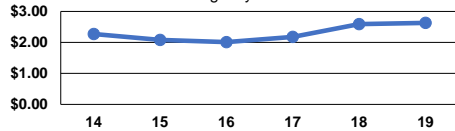
#### Service Efficiency

Mode	Operating Expenses per Vehicle Revenue Mile	Operating Expenses per Vehicle Revenue Hour
Bus	\$2.63	\$82.10
<b>Total</b>	<b>\$2.63</b>	<b>\$82.10</b>

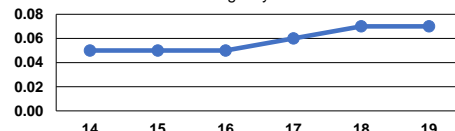
#### Service Effectiveness

Mode	Operating Expenses per Unlinked Passenger Trip	Unlinked Trips per Vehicle Revenue Mile	Unlinked Trips per Vehicle Revenue Hour
Bus	\$37.61	0.1	2.2
<b>Total</b>	<b>\$37.61</b>	<b>0.1</b>	<b>2.2</b>

Operating Expense per Vehicle Revenue Mile: Agency Total



Unlinked Passenger Trips per Vehicle Revenue Mile: Agency Total



**Notes:**

<sup>a</sup>Demand Response - Taxi (DT) and non-dedicated fleets do not report fleet age data.