

## General Information

### Urbanized Area (UZA) Statistics - 2010 Census

Fredericksburg, VA  
 78 **Square Miles**  
 141,238 **Population**  
 231 **Pop. Rank out of 498 UZAs**

### Other UZAs Served

0 Virginia Non-UZA, 8 Washington, DC-VA-MD

### Service Area Statistics

242 **Square Miles**  
 113,716 **Population**

### Service Consumption

296,632 **Annual Unlinked Trips (UPT)**

### Service Supplied

863,514 **Annual Vehicle Revenue Miles (VRM)**  
 53,033 **Annual Vehicle Revenue Hours (VRH)**

### Database Information

NTDID: 30079

Reporter Type: Reduced Reporter

## Financial Information

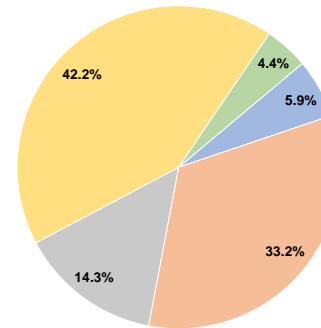
### Sources of Operating Funds Expended

Fare Revenues	\$304,830	5.9%
Local Funds	\$1,709,683	33.2%
State Funds	\$734,602	14.3%
Federal Assistance	\$2,176,716	42.2%
Other Funds	\$226,471	4.4%
<b>Total Operating Funds Expended</b>	<b>\$5,152,302</b>	<b>100.0%</b>

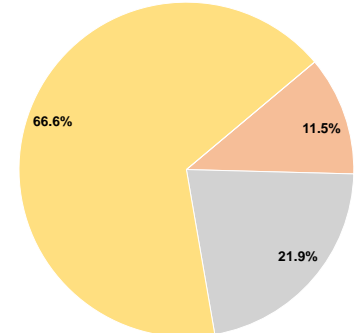
### Sources of Capital Funds Expended

Fare Revenues	\$0	0.0%
Local Funds	\$28,798	11.5%
State Funds	\$54,641	21.9%
Federal Assistance	\$166,407	66.6%
Other Funds	\$0	0.0%
<b>Total Capital Funds Expended</b>	<b>\$249,846</b>	<b>100.0%</b>

### Operating Funding Sources



### Capital Funding Sources



## Modal Characteristics

### Operation Characteristics

#### Vehicles Operated at Maximum Service

Mode	Directly Operated	Purchased Transportation	Operating Expenses	Fare Revenues	Uses of Capital Funds	Annual Unlinked Trips	Annual Vehicle Revenue Miles	Annual Vehicle Revenue Hours	Average Fleet Age in Years <sup>a</sup>
Bus	21	-	\$5,152,302	\$304,830	\$249,846	296,632	863,514	53,033	4.6
<b>Total</b>	<b>21</b>	<b>-</b>	<b>\$5,152,302</b>	<b>\$304,830</b>	<b>\$249,846</b>	<b>296,632</b>	<b>863,514</b>	<b>53,033</b>	

### Performance Measures

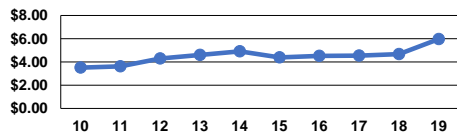
#### Service Efficiency

Mode	Operating Expenses per Vehicle Revenue Mile	Operating Expenses per Vehicle Revenue Hour
Bus	\$5.97	\$97.15
<b>Total</b>	<b>\$5.97</b>	<b>\$97.15</b>

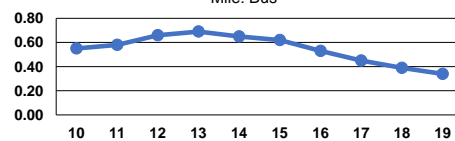
#### Service Effectiveness

Mode	Operating Expenses per Unlinked Passenger Trip	Unlinked Trips per Vehicle Revenue Mile	Unlinked Trips per Vehicle Revenue Hour
Bus	\$17.37	0.3	5.6
<b>Total</b>	<b>\$17.37</b>	<b>0.3</b>	<b>5.6</b>

Operating Expense per Vehicle Revenue Mile: Bus



Unlinked Passenger Trips per Vehicle Revenue Mile: Bus



### Notes:

<sup>a</sup>Demand Response - Taxi (DT) and non-dedicated fleets do not report fleet age data.