

## General Information

### Urbanized Area (UZA) Statistics - 2010 Census

Philadelphia, PA-NJ-DE-MD  
1,981 **Square Miles**  
5,441,567 **Population**  
5 **Pop. Rank out of 498 UZAs**

### Other UZAs Served

0 Maryland Non-UZA

### Service Area Statistics

346 **Square Miles**  
102,383 **Population**

### Service Consumption

103,880 **Annual Unlinked Trips (UPT)**

### Service Supplied

566,695 **Annual Vehicle Revenue Miles (VRM)**  
25,845 **Annual Vehicle Revenue Hours (VRH)**

### Database Information

NTDID: 30108

Reporter Type: Reduced Reporter

## Financial Information

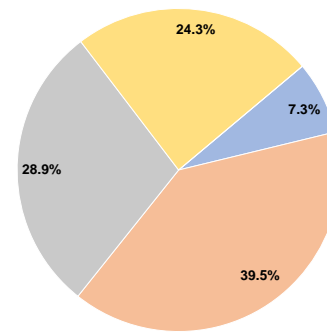
### Sources of Operating Funds Expended

Fare Revenues	\$139,531	7.3%
Local Funds	\$753,078	39.5%
State Funds	\$551,134	28.9%
Federal Assistance	\$462,285	24.3%
Other Funds	\$0	0.0%
<b>Total Operating Funds Expended</b>	<b>\$1,906,028</b>	<b>100.0%</b>

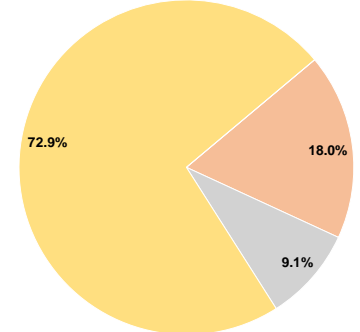
### Sources of Capital Funds Expended

Fare Revenues	\$0	0.0%
Local Funds	\$31,202	18.0%
State Funds	\$15,811	9.1%
Federal Assistance	\$126,489	72.9%
Other Funds	\$0	0.0%
<b>Total Capital Funds Expended</b>	<b>\$173,502</b>	<b>100.0%</b>

### Operating Funding Sources



### Capital Funding Sources



## Modal Characteristics

### Operation Characteristics

#### Vehicles Operated at Maximum Service

Mode	Directly Operated	Purchased Transportation	Operating Expenses	Fare Revenues	Uses of Capital Funds	Annual Unlinked Trips	Annual Vehicle Revenue Miles	Annual Vehicle Revenue Hours	Average Fleet Age in Years <sup>a</sup>
Demand Response	7	-	\$447,590	\$19,416	\$41,640	24,597	154,355	6,403	6.7
Bus	6	-	\$1,458,438	\$120,115	\$131,862	79,283	412,340	19,442	6.0
<b>Total</b>	<b>13</b>	<b>-</b>	<b>\$1,906,028</b>	<b>\$139,531</b>	<b>\$173,502</b>	<b>103,880</b>	<b>566,695</b>	<b>25,845</b>	

### Performance Measures

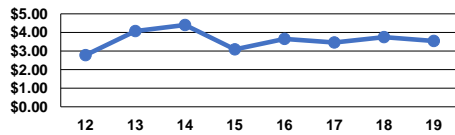
#### Service Efficiency

Mode	Operating Expenses per Vehicle Revenue Mile	Operating Expenses per Vehicle Revenue Hour
Demand Response	\$2.90	\$69.90
Bus	\$3.54	\$75.01
<b>Total</b>	<b>\$3.36</b>	<b>\$73.75</b>

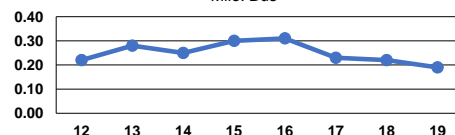
#### Service Effectiveness

Mode	Operating Expenses per Unlinked Passenger Trip	Unlinked Trips per Vehicle Revenue Mile	Unlinked Trips per Vehicle Revenue Hour
Demand Response	\$18.20	0.2	3.8
Bus	\$18.40	0.2	4.1
<b>Total</b>	<b>\$18.35</b>	<b>0.2</b>	<b>4.0</b>

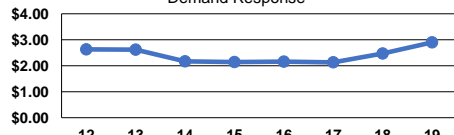
Operating Expense per Vehicle Revenue Mile: Bus



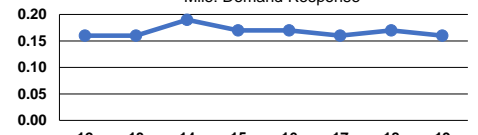
Unlinked Passenger Trips per Vehicle Revenue Mile: Bus



Operating Expense per Vehicle Revenue Mile: Demand Response



Unlinked Passenger Trips per Vehicle Revenue Mile: Demand Response



**Notes:**

<sup>a</sup>Demand Response - Taxi (DT) and non-dedicated fleets do not report fleet age data.