

General Information

Urbanized Area Statistics - 2010 Census
 Greenville, SC
 320 Square Miles
 400,492 Population
 93 Pop. Rank out of 498 UZAs

Other UZAs Served
 258 Mauldin-Simpsonville, SC

Service Consumption
 4,273,765 Annual Passenger Miles (PMT)
 808,801 Annual Unlinked Trips (UPT)
 2,662 Average Weekday Unlinked Trips
 2,206 Average Saturday Unlinked Trips
 451 Average Sunday Unlinked Trips

Database Information
 NTDID: 40053
 Reporter Type: Full Reporter

Service Area Statistics
 94 Square Miles
 187,153 Population

Service Supplied
 938,230 Annual Vehicle Revenue Miles (VRM)
 63,933 Annual Vehicle Revenue Hours (VRH)
 22 Vehicles Operated in Maximum Service (VOMS)
 30 Vehicles Available for Maximum Service (VAMS)

Modal Characteristics

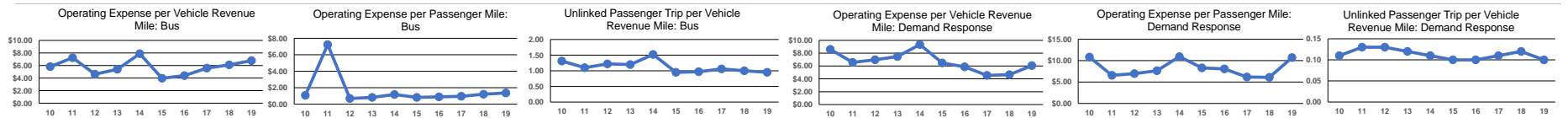
Modal Overview	Vehicles Operated in Maximum Service		Uses of Capital Funds					Total
	Directly Operated	Purchased Transportation	Revenue Vehicles	Systems and Guideways	Facilities and Stations	Other		
Mode								
Demand Response	5	-	\$0	\$0	\$0	\$0	\$0	\$0
Bus	17	-	\$4,450,222	\$0	\$278,707	\$56,418	\$4,785,347	
Total	22	-	\$4,450,222	\$0	\$278,707	\$56,418	\$4,785,347	

Operation Characteristics

Mode	Operating Expenses	Fare Revenues	Uses of Capital Funds	Annual Passenger Miles	Annual Unlinked Trips	Annual Vehicle Revenue Miles	Annual Vehicle Revenue Hours	Fixed Guideway Directional Route Miles	Vehicles Available for Maximum Service	Vehicles Operated in Maximum Service	Percent Spare Vehicles	Average Fleet Age in Years ^a
Demand Response	\$562,332	\$26,994	\$0	52,513	9,455	92,644	7,211	0.0	5	5	0.0%	5.4
Bus	\$5,735,206	\$705,882	\$4,785,347	4,221,252	799,346	845,586	56,722	0.0	25	17	32.0%	7.2
Total	\$6,297,538	\$732,876	\$4,785,347	4,273,765	808,801	938,230	63,933	0.0	30	22	26.7%	

Performance Measures

Mode	Service Efficiency		Mode	Service Effectiveness			
	Operating Expenses per Vehicle Revenue Mile	Operating Expenses per Vehicle Revenue Hour		Operating Expenses per Passenger Mile	Unlinked Trips per Vehicle Revenue Mile	Unlinked Trips per Vehicle Revenue Hour	
Demand Response	\$6.07	\$77.98	Demand Response	\$10.71	\$59.47	0.1	1.3
Bus	\$6.78	\$101.11	Bus	\$1.36	\$7.17	0.9	14.1
Total	\$6.71	\$98.50	Total	\$1.47	\$7.79	0.9	12.7



Notes:
^aDemand Response - Taxi (DT) and non-dedicated fleets do not report fleet age data.

Financial Information

Sources of Operating Funds Expended
 Fares and Directly Generated \$1,057,800 16.8%
 Local Funds \$1,496,399 23.8%
 State Funds \$446,953 7.1%
 Federal Assistance \$3,296,386 52.3%

Total Operating Funds Expended \$6,297,538 100.0%

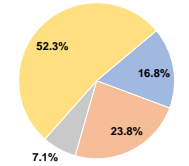
Sources of Capital Funds Expended
 Fares and Directly Generated \$0 0.0%
 Local Funds \$627,671 13.1%
 State Funds \$174,195 3.6%
 Federal Assistance \$3,983,481 83.2%

Total Capital Funds Expended \$4,785,347 100.0%

Summary of Operating Expenses (OE)

Labor \$3,920,517 62.3%
 Materials and Supplies \$1,365,522 21.7%
 Purchased Transportation \$0 0.0%
 Other Operating Expenses \$1,011,499 16.1%
Total Operating Expenses \$6,297,538 100.0%
 Reconciling OE Cash Expenditures \$0
 Purchased Transportation (Reported Separately) \$0

Operating Funding Sources



Capital Funding Sources

