

General Information

Urbanized Area (UZA) Statistics - 2010 Census

Johnson City, TN
110 **Square Miles**
120,415 **Population**
259 **Pop. Rank out of 498 UZAs**

Service Area Statistics

44 **Square Miles**
61,630 **Population**

Service Consumption

637,814 **Annual Unlinked Trips (UPT)**

Service Supplied

666,929 **Annual Vehicle Revenue Miles (VRM)**
51,557 **Annual Vehicle Revenue Hours (VRH)**

Database Information

NTDID: 40054

Reporter Type: Reduced Reporter

Financial Information

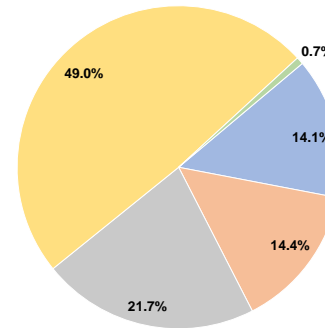
Sources of Operating Funds Expended

Fare Revenues	\$530,507	14.1%
Local Funds	\$542,724	14.4%
State Funds	\$816,550	21.7%
Federal Assistance	\$1,839,915	49.0%
Other Funds	\$27,112	0.7%
Total Operating Funds Expended	\$3,756,808	100.0%

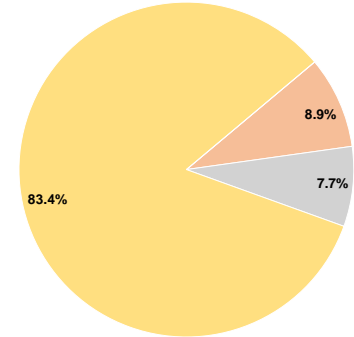
Sources of Capital Funds Expended

Fare Revenues	\$0	0.0%
Local Funds	\$201,222	8.9%
State Funds	\$174,835	7.7%
Federal Assistance	\$1,887,230	83.4%
Other Funds	\$0	0.0%
Total Capital Funds Expended	\$2,263,287	100.0%

Operating Funding Sources



Capital Funding Sources



Modal Characteristics

Operation Characteristics

Vehicles Operated at Maximum Service

Mode	Directly Operated	Purchased Transportation	Operating Expenses	Fare Revenues	Uses of Capital Funds	Annual Unlinked Trips	Annual Vehicle Revenue Miles	Annual Vehicle Revenue Hours	Average Fleet Age in Years ^a
Demand Response	12	-	\$1,594,694	\$95,605	\$157,360	42,907	235,756	19,284	4.4
Bus	15	-	\$2,162,114	\$434,902	\$2,105,927	594,907	431,173	32,273	6.3
Total	27	-	\$3,756,808	\$530,507	\$2,263,287	637,814	666,929	51,557	

Performance Measures

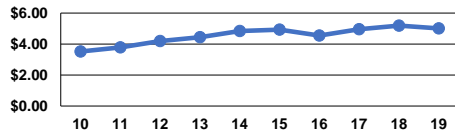
Service Efficiency

Mode	Operating Expenses per Vehicle Revenue Mile	Operating Expenses per Vehicle Revenue Hour
Demand Response	\$6.76	\$82.70
Bus	\$5.01	\$66.99
Total	\$5.63	\$72.87

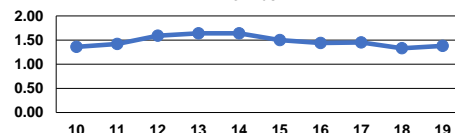
Service Effectiveness

Mode	Operating Expenses per Unlinked Passenger Trip	Unlinked Trips per Vehicle Revenue Mile	Unlinked Trips per Vehicle Revenue Hour
Demand Response	\$37.17	0.2	2.2
Bus	\$3.63	1.4	18.4
Total	\$5.89	1.0	12.4

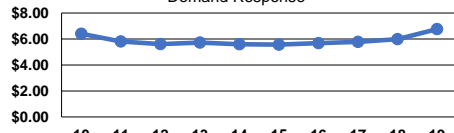
Operating Expense per Vehicle Revenue Mile: Bus



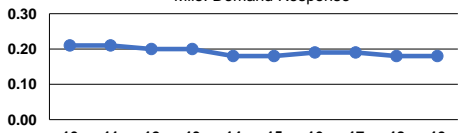
Unlinked Passenger Trips per Vehicle Revenue Mile: Bus



Operating Expense per Vehicle Revenue Mile: Demand Response



Unlinked Passenger Trips per Vehicle Revenue Mile: Demand Response



Notes:

^aDemand Response - Taxi (DT) and non-dedicated fleets do not report fleet age data.