

General Information

Urbanized Area (UZA) Statistics - 2010 Census

Bristol-Bristol, TN-VA
 64 **Square Miles**
 69,501 **Population**
 397 **Pop. Rank out of 498 UZAs**

Service Area Statistics

33 **Square Miles**
 26,702 **Population**

Service Consumption

49,506 **Annual Unlinked Trips (UPT)**

Service Supplied

166,427 **Annual Vehicle Revenue Miles (VRM)**
 13,804 **Annual Vehicle Revenue Hours (VRH)**

Database Information

NTDID: 40055

Reporter Type: Reduced Reporter

Financial Information

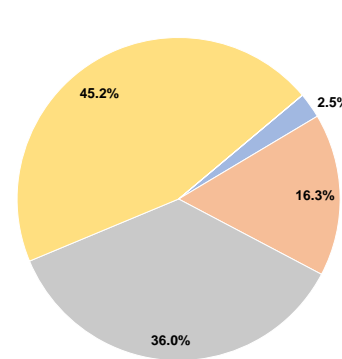
Sources of Operating Funds Expended

Fare Revenues	\$16,361	2.5%
Local Funds	\$104,557	16.3%
State Funds	\$231,171	36.0%
Federal Assistance	\$290,010	45.2%
Other Funds	\$26	0.0%
Total Operating Funds Expended	\$642,125	100.0%

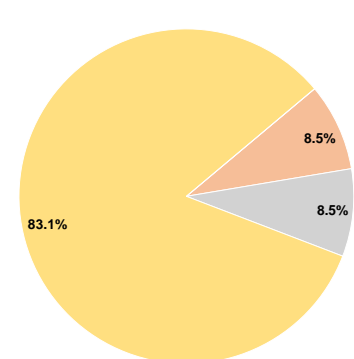
Sources of Capital Funds Expended

Fare Revenues	\$0	0.0%
Local Funds	\$13,811	8.5%
State Funds	\$13,811	8.5%
Federal Assistance	\$135,526	83.1%
Other Funds	\$0	0.0%
Total Capital Funds Expended	\$163,148	100.0%

Operating Funding Sources



Capital Funding Sources



Modal Characteristics

Operation Characteristics

Vehicles Operated at Maximum Service

Mode	Directly Operated	Purchased Transportation	Operating Expenses	Fare Revenues	Uses of Capital Funds	Annual Unlinked Trips	Annual Vehicle Revenue Miles	Annual Vehicle Revenue Hours	Average Fleet Age in Years ^a
Demand Response	4	-	\$223,122	\$875	\$163,148	6,803	74,002	6,554	4.7
Bus	3	-	\$419,003	\$15,486	\$0	42,703	92,425	7,250	8.0
Total	7	-	\$642,125	\$16,361	\$163,148	49,506	166,427	13,804	

Performance Measures

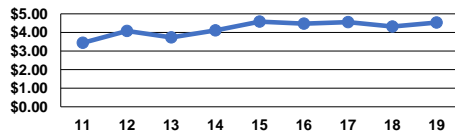
Service Efficiency

Mode	Operating Expenses per Vehicle Revenue Mile	Operating Expenses per Vehicle Revenue Hour
Demand Response	\$3.02	\$34.04
Bus	\$4.53	\$57.79
Total	\$3.86	\$46.52

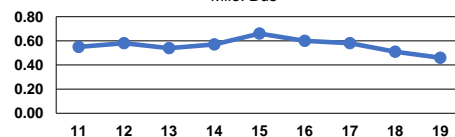
Service Effectiveness

Mode	Operating Expenses per Unlinked Passenger Trip	Unlinked Trips per Vehicle Revenue Mile	Unlinked Trips per Vehicle Revenue Hour
Demand Response	\$32.80	0.1	1.0
Bus	\$9.81	0.5	5.9
Total	\$12.97	0.3	3.6

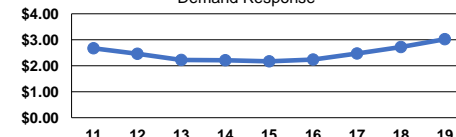
Operating Expense per Vehicle Revenue Mile: Bus



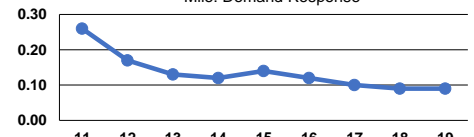
Unlinked Passenger Trips per Vehicle Revenue Mile: Bus



Operating Expense per Vehicle Revenue Mile: Demand Response



Unlinked Passenger Trips per Vehicle Revenue Mile: Demand Response



Notes:

^aDemand Response - Taxi (DT) and non-dedicated fleets do not report fleet age data.