

General Information

Urbanized Area (UZA) Statistics - 2010 Census

Florence, SC
 71 **Square Miles**
 89,557 **Population**
 325 **Pop. Rank out of 498 UZAs**

Other UZAs Served

0 South Carolina Non-UZA

Service Area Statistics

1,865 **Square Miles**
 242,174 **Population**

Service Consumption

252,440 **Annual Unlinked Trips (UPT)**

Service Supplied

562,400 **Annual Vehicle Revenue Miles (VRM)**
 34,204 **Annual Vehicle Revenue Hours (VRH)**

Database Information

NTDID: 40056

Reporter Type: Reduced Reporter

Financial Information

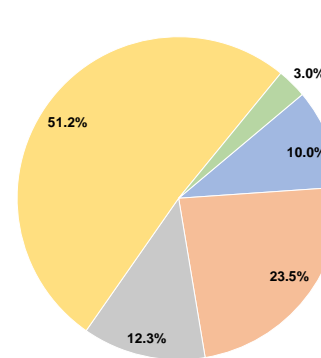
Sources of Operating Funds Expended

Fare Revenues	\$285,059	10.0%
Local Funds	\$667,830	23.5%
State Funds	\$350,943	12.3%
Federal Assistance	\$1,457,275	51.2%
Other Funds	\$84,855	3.0%
Total Operating Funds Expended	\$2,845,962	100.0%

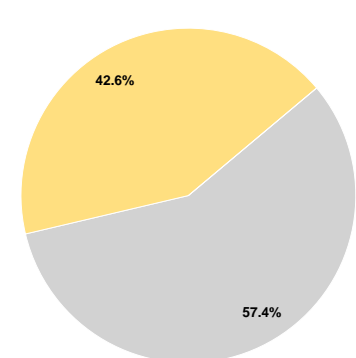
Sources of Capital Funds Expended

Fare Revenues	\$0	0.0%
Local Funds	\$0	0.0%
State Funds	\$462,019	57.4%
Federal Assistance	\$342,527	42.6%
Other Funds	\$0	0.0%
Total Capital Funds Expended	\$804,546	100.0%

Operating Funding Sources



Capital Funding Sources



Modal Characteristics

Operation Characteristics

Vehicles Operated at Maximum Service

Mode	Directly Operated	Purchased Transportation	Operating Expenses	Fare Revenues	Uses of Capital Funds	Annual Unlinked Trips	Annual Vehicle Revenue Miles	Annual Vehicle Revenue Hours	Average Fleet Age in Years ^a
Demand Response	3	-	\$133,135	\$9,812	\$0	2,476	20,190	1,980	6.3
Bus	24	-	\$2,712,827	\$275,247	\$804,546	249,964	542,210	32,224	7.0
Total	27	-	\$2,845,962	\$285,059	\$804,546	252,440	562,400	34,204	

Performance Measures

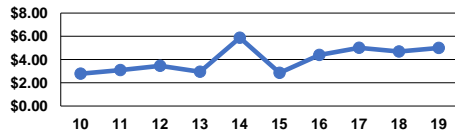
Service Efficiency

Mode	Operating Expenses per Vehicle Revenue Mile	Operating Expenses per Vehicle Revenue Hour
Demand Response	\$6.59	\$67.24
Bus	\$5.00	\$84.19
Total	\$5.06	\$83.21

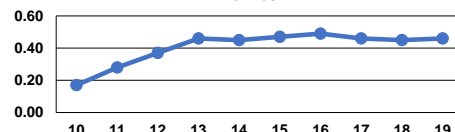
Service Effectiveness

Mode	Operating Expenses per Unlinked Passenger Trip	Unlinked Trips per Vehicle Revenue Mile	Unlinked Trips per Vehicle Revenue Hour
Demand Response	\$53.77	0.1	1.3
Bus	\$10.85	0.5	7.8
Total	\$11.27	0.4	7.4

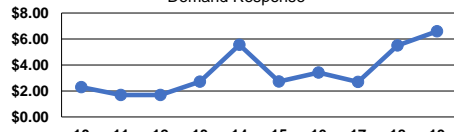
Operating Expense per Vehicle Revenue Mile: Bus



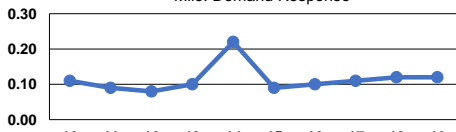
Unlinked Passenger Trips per Vehicle Revenue Mile: Bus



Operating Expense per Vehicle Revenue Mile: Demand Response



Unlinked Passenger Trips per Vehicle Revenue Mile: Demand Response



Notes:

^aDemand Response - Taxi (DT) and non-dedicated fleets do not report fleet age data.