

General Information

Urbanized Area (UZA) Statistics - 2010 Census

Greensboro, NC
185 **Square Miles**
311,810 **Population**
120 **Pop. Rank out of 498 UZAs**

Other UZAs Served

0 North Carolina Non-UZA, 202 High Point, NC

Service Area Statistics

52 **Square Miles**
248,111 **Population**

Service Consumption

44,918 **Annual Unlinked Trips (UPT)**

Service Supplied

406,127 **Annual Vehicle Revenue Miles (VRM)**
18,558 **Annual Vehicle Revenue Hours (VRH)**

Database Information

NTDID: 40133
Reporter Type: Reduced Reporter

Financial Information

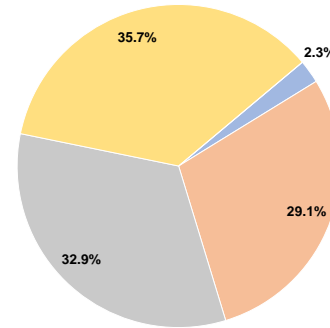
Sources of Operating Funds Expended

Fare Revenues	\$17,806	2.3%
Local Funds	\$221,615	29.1%
State Funds	\$251,021	32.9%
Federal Assistance	\$272,000	35.7%
Other Funds	\$0	0.0%
Total Operating Funds Expended	\$762,442	100.0%

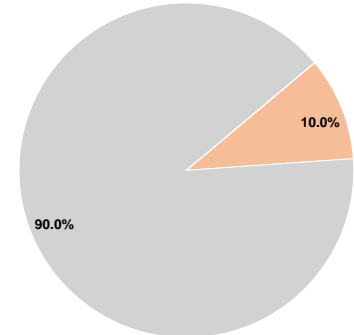
Sources of Capital Funds Expended

Fare Revenues	\$0	0.0%
Local Funds	\$39,387	10.0%
State Funds	\$354,477	90.0%
Federal Assistance	\$0	0.0%
Other Funds	\$0	0.0%
Total Capital Funds Expended	\$393,864	100.0%

Operating Funding Sources



Capital Funding Sources



Modal Characteristics

Operation Characteristics

Vehicles Operated at Maximum Service

Mode	Directly Operated	Purchased Transportation	Operating Expenses	Fare Revenues	Uses of Capital Funds	Annual Unlinked Trips	Annual Vehicle Revenue Miles	Annual Vehicle Revenue Hours	Average Fleet Age in Years ^a
Demand Response	21	-	\$762,442	\$17,806	\$393,864	44,918	406,127	18,558	2.9
Total	21	-	\$762,442	\$17,806	\$393,864	44,918	406,127	18,558	

Performance Measures

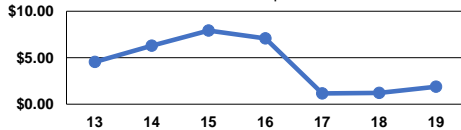
Service Efficiency

Mode	Operating Expenses per Vehicle Revenue Mile	Operating Expenses per Vehicle Revenue Hour
Demand Response	\$1.88	\$41.08
Total	\$1.88	\$41.08

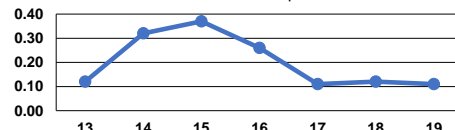
Service Effectiveness

Mode	Operating Expenses per Unlinked Passenger Trip	Unlinked Trips per Vehicle Revenue Mile	Unlinked Trips per Vehicle Revenue Hour
Demand Response	\$16.97	0.1	2.4
Total	\$16.97	0.1	2.4

Operating Expense per Vehicle Revenue Mile: Demand Response



Unlinked Passenger Trips per Vehicle Revenue Mile: Demand Response



Notes:

^aDemand Response - Taxi (DT) and non-dedicated fleets do not report fleet age data.