

**General Information**

**Urbanized Area (UZA) Statistics - 2010 Census**

Gainesville, GA  
126 **Square Miles**  
130,846 **Population**  
245 **Pop. Rank out of 498 UZAs**

**Other UZAs Served**

0 Georgia Non-UZA

**Service Area Statistics**

361 **Square Miles**  
199,999 **Population**

**Service Consumption**

156,242 **Annual Unlinked Trips (UPT)**

**Service Supplied**

369,795 **Annual Vehicle Revenue Miles (VRM)**  
24,938 **Annual Vehicle Revenue Hours (VRH)**

**Database Information**

NTDID: 40144

Reporter Type: Reduced Reporter

**Financial Information**

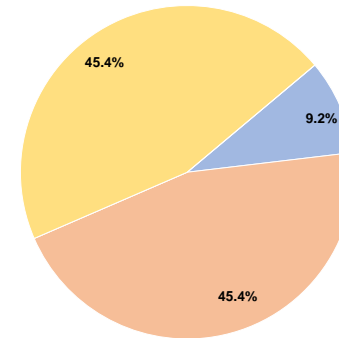
**Sources of Operating Funds Expended**

Fare Revenues	\$125,661	9.2%
Local Funds	\$618,334	45.4%
State Funds	\$0	0.0%
Federal Assistance	\$618,334	45.4%
Other Funds	\$0	0.0%
<b>Total Operating Funds Expended</b>	<b>\$1,362,329</b>	<b>100.0%</b>

**Sources of Capital Funds Expended**

Fare Revenues	\$0
Local Funds	\$0
State Funds	\$0
Federal Assistance	\$0
Other Funds	\$0
<b>Total Capital Funds Expended</b>	<b>\$0</b>

**Operating Funding Sources**



**Modal Characteristics**

**Operation Characteristics**

**Vehicles Operated at Maximum Service**

Mode	Directly Operated	Purchased Transportation	Operating Expenses	Fare Revenues	Uses of Capital Funds	Annual Unlinked Trips	Annual Vehicle Revenue Miles	Annual Vehicle Revenue Hours	Average Fleet Age in Years <sup>a</sup>
Demand Response	5	-	\$460,044	\$39,000	\$0	10,294	110,146	7,448	5.0
Bus	6	-	\$902,285	\$86,661	\$0	145,948	259,649	17,490	5.3
<b>Total</b>	<b>11</b>	<b>-</b>	<b>\$1,362,329</b>	<b>\$125,661</b>	<b>\$0</b>	<b>156,242</b>	<b>369,795</b>	<b>24,938</b>	

**Performance Measures**

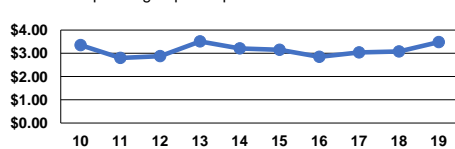
**Service Efficiency**

Mode	Operating Expenses per Vehicle Revenue Mile	Operating Expenses per Vehicle Revenue Hour
Demand Response	\$4.18	\$61.77
Bus	\$3.48	\$51.59
<b>Total</b>	<b>\$3.68</b>	<b>\$54.63</b>

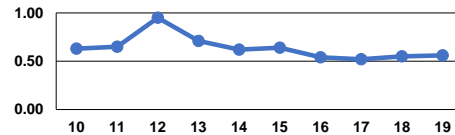
**Service Effectiveness**

Mode	Operating Expenses per Unlinked Passenger Trip	Unlinked Trips per Vehicle Revenue Mile	Unlinked Trips per Vehicle Revenue Hour
Demand Response	\$44.69	0.1	1.4
Bus	\$6.18	0.6	8.3
<b>Total</b>	<b>\$8.72</b>	<b>0.4</b>	<b>6.3</b>

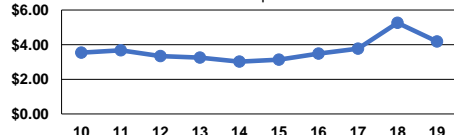
Operating Expense per Vehicle Revenue Mile: Bus



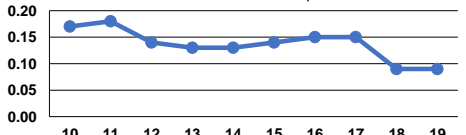
Unlinked Passenger Trips per Vehicle Revenue Mile: Bus



Operating Expense per Vehicle Revenue Mile: Demand Response



Unlinked Passenger Trips per Vehicle Revenue Mile: Demand Response



**Notes:**

<sup>a</sup>Demand Response - Taxi (DT) and non-dedicated fleets do not report fleet age data.