

General Information

Urbanized Area (UZA) Statistics - 2010 Census

Yauco, PR
47 **Square Miles**
90,899 **Population**
319 **Pop. Rank out of 498 UZAs**

Other UZAs Served

0 Puerto Rico Non-UZA

Service Area Statistics

62 **Square Miles**
37,679 **Population**

Service Consumption

106,594 **Annual Unlinked Trips (UPT)**

Service Supplied

364,559 **Annual Vehicle Revenue Miles (VRM)**
35,188 **Annual Vehicle Revenue Hours (VRH)**

Database Information

NTDID: 40174

Reporter Type: Reduced Reporter

Financial Information

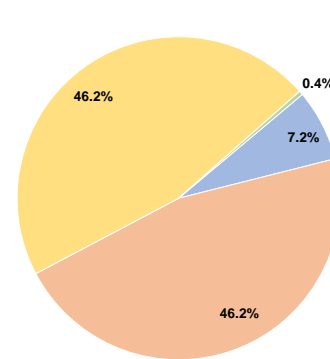
Sources of Operating Funds Expended

Fare Revenues	\$47,814	7.2%
Local Funds	\$307,951	46.2%
State Funds	\$0	0.0%
Federal Assistance	\$307,951	46.2%
Other Funds	\$2,700	0.4%
Total Operating Funds Expended	\$666,416	100.0%

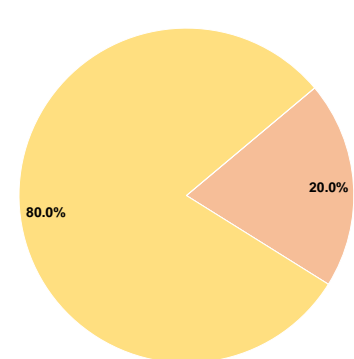
Sources of Capital Funds Expended

Fare Revenues	\$0	0.0%
Local Funds	\$17,102	20.0%
State Funds	\$0	0.0%
Federal Assistance	\$68,409	80.0%
Other Funds	\$0	0.0%
Total Capital Funds Expended	\$85,511	100.0%

Operating Funding Sources



Capital Funding Sources



Modal Characteristics

Operation Characteristics

Vehicles Operated at Maximum Service

Mode	Directly Operated	Purchased Transportation	Operating Expenses	Fare Revenues	Uses of Capital Funds	Annual Unlinked Trips	Annual Vehicle Revenue Miles	Annual Vehicle Revenue Hours	Average Fleet Age in Years ^a
Demand Response	4	-	\$96,148	\$0	\$0	8,328	66,127	5,758	7.0
Bus	17	-	\$570,268	\$47,814	\$85,511	98,266	298,432	29,430	6.8
Total	21	-	\$666,416	\$47,814	\$85,511	106,594	364,559	35,188	

Performance Measures

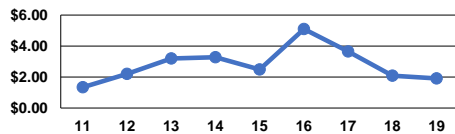
Service Efficiency

Mode	Operating Expenses per Vehicle Revenue Mile	Operating Expenses per Vehicle Revenue Hour
Demand Response	\$1.45	\$16.70
Bus	\$1.91	\$19.38
Total	\$1.83	\$18.94

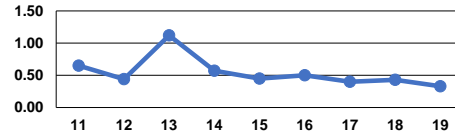
Service Effectiveness

Mode	Operating Expenses per Unlinked Passenger Trip	Unlinked Trips per Vehicle Revenue Mile	Unlinked Trips per Vehicle Revenue Hour
Demand Response	\$11.55	0.1	1.4
Bus	\$5.80	0.3	3.3
Total	\$6.25	0.3	3.0

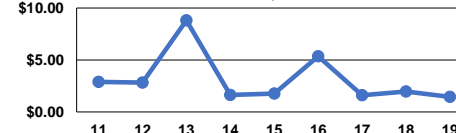
Operating Expense per Vehicle Revenue Mile: Bus



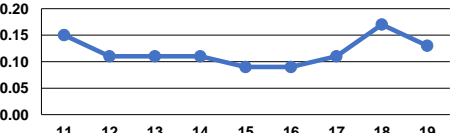
Unlinked Passenger Trips per Vehicle Revenue Mile: Bus



Operating Expense per Vehicle Revenue Mile: Demand Response



Unlinked Passenger Trips per Vehicle Revenue Mile: Demand Response



Notes:

^aDemand Response - Taxi (DT) and non-dedicated fleets do not report fleet age data.