

**General Information**

**Urbanized Area (UZA) Statistics - 2010 Census**

Virgin Islands, VI  
 134 **Square Miles**  
 106,405 **Population**  
 600 **Pop. Rank out of 498 UZAs**

**Service Area Statistics**

132 **Square Miles**  
 89,246 **Population**

**Service Consumption**

306,109 **Annual Unlinked Trips (UPT)**

**Service Supplied**

641,838 **Annual Vehicle Revenue Miles (VRM)**  
 60,517 **Annual Vehicle Revenue Hours (VRH)**

**Database Information**

NTDID: 40188

Reporter Type: Reduced Reporter

**Financial Information**

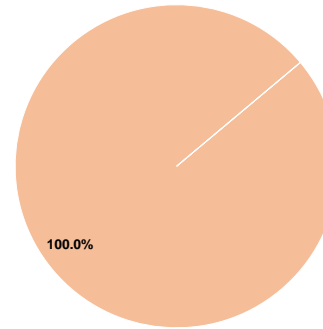
**Sources of Operating Funds Expended**

Fare Revenues	\$0	0.0%
Local Funds	\$4,954,345	100.0%
State Funds	\$0	0.0%
Federal Assistance	\$0	0.0%
Other Funds	\$0	0.0%
<b>Total Operating Funds Expended</b>	<b>\$4,954,345</b>	<b>100.0%</b>

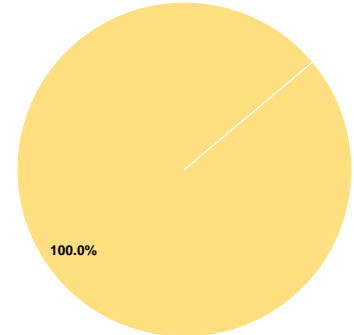
**Sources of Capital Funds Expended**

Fare Revenues	\$0	0.0%
Local Funds	\$0	0.0%
State Funds	\$0	0.0%
Federal Assistance	\$4,350,889	100.0%
Other Funds	\$0	0.0%
<b>Total Capital Funds Expended</b>	<b>\$4,350,889</b>	<b>100.0%</b>

**Operating Funding Sources**



**Capital Funding Sources**



**Modal Characteristics**

**Operation Characteristics**

**Vehicles Operated at Maximum Service**

Mode	Directly Operated	Purchased Transportation	Operating Expenses	Fare Revenues	Uses of Capital Funds	Annual Unlinked Trips	Annual Vehicle Revenue Miles	Annual Vehicle Revenue Hours	Average Fleet Age in Years <sup>a</sup>
Demand Response	16	-	\$2,972,607	\$0	\$212,075	61,939	349,850	30,223	2.9
Bus	11	-	\$1,981,738	\$0	\$4,138,814	244,170	291,988	30,294	3.0
<b>Total</b>	<b>27</b>	<b>-</b>	<b>\$4,954,345</b>	<b>\$0</b>	<b>\$4,350,889</b>	<b>306,109</b>	<b>641,838</b>	<b>60,517</b>	

**Performance Measures**

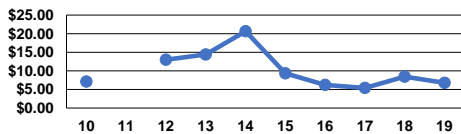
**Service Efficiency**

Mode	Operating Expenses per Vehicle Revenue Mile	Operating Expenses per Vehicle Revenue Hour
Demand Response	\$8.50	\$98.36
Bus	\$6.79	\$65.42
<b>Total</b>	<b>\$7.72</b>	<b>\$81.87</b>

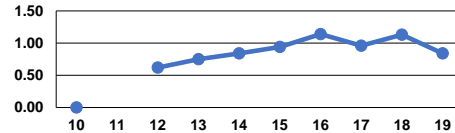
**Service Effectiveness**

Mode	Operating Expenses per Unlinked Passenger Trip	Unlinked Trips per Vehicle Revenue Mile	Unlinked Trips per Vehicle Revenue Hour
Demand Response	\$47.99	0.2	2.0
Bus	\$8.12	0.8	8.1
<b>Total</b>	<b>\$16.18</b>	<b>0.5</b>	<b>5.1</b>

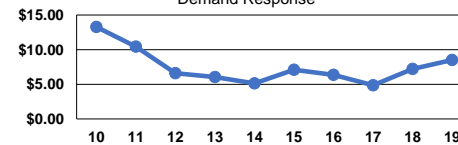
Operating Expense per Vehicle Revenue Mile: Bus



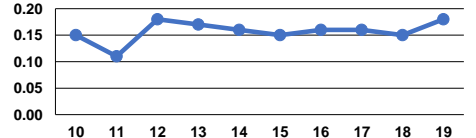
Unlinked Passenger Trips per Vehicle Revenue Mile: Bus



Operating Expense per Vehicle Revenue Mile: Demand Response



Unlinked Passenger Trips per Vehicle Revenue Mile: Demand Response



**Notes:**

<sup>a</sup>Demand Response - Taxi (DT) and non-dedicated fleets do not report fleet age data.