

General Information

Financial Information

Federally Recognized Tribal Statistical Areas

Bay Mills Reservation and Off-Reservation Trust Land, MI

Service Consumption

1,450 Annual Unlinked Trips (UPT)

Service Supplied

29,714 Annual Vehicle Revenue Miles (VRM)
 1,560 Annual Vehicle Revenue Hours (VRH)

Database Information

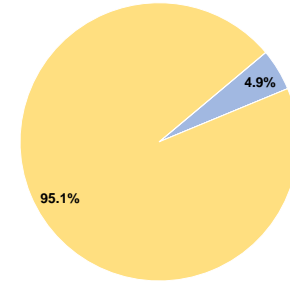
NTDID: 50007

Reporter Type: Tribal Reporter

Sources of Operating Funds Expended

Fare Revenues	\$2,544	4.9%
Local Funds	\$0	0.0%
State Funds	\$0	0.0%
Federal Assistance	\$49,749	95.1%
Other Funds	\$0	0.0%
Total Operating Funds Expended	\$52,293	100.0%

Operating Funding Sources



Sources of Capital Funds Expended

Fare Revenues	\$0
Local Funds	\$0
State Funds	\$0
Federal Assistance	\$0
Other Funds	\$0
Total Capital Funds Expended	\$0

Modal Characteristics

Operation Characteristics

Vehicles Operated at Maximum Service

Mode	Directly Operated	Purchased Transportation	Operating Expenses	Fare Revenues	Uses of Capital Funds	Annual Unlinked Trips	Annual Vehicle Revenue Miles	Annual Vehicle Revenue Hours	Average Fleet Age in Years ^a
Bus	2	-	\$52,293	\$2,544	\$0	1,450	29,714	1,560	6.5
Total	2	-	\$52,293	\$2,544	\$0	1,450	29,714	1,560	

Performance Measures

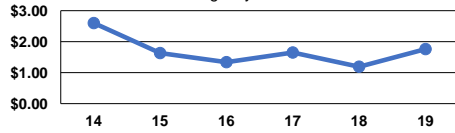
Service Efficiency

Mode	Operating Expenses per Vehicle Revenue Mile	Operating Expenses per Vehicle Revenue Hour
Bus	\$1.76	\$33.52
Total	\$1.76	\$33.52

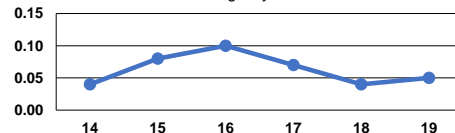
Service Effectiveness

Mode	Operating Expenses per Unlinked Passenger Trip	Unlinked Trips per Vehicle Revenue Mile	Unlinked Trips per Vehicle Revenue Hour
Bus	\$36.06	0.0	0.9
Total	\$36.06	0.0	0.9

Operating Expense per Vehicle Revenue Mile: Agency Total



Unlinked Passenger Trips per Vehicle Revenue Mile: Agency Total



Notes:

^aDemand Response - Taxi (DT) and non-dedicated fleets do not report fleet age data.