

**General Information**

**Urbanized Area Statistics - 2010 Census**

Saginaw, MI  
71 Square Miles  
126,265 Population  
253 Pop. Rank out of 498 UZAs  
**Other UZAs Served**  
0 Michigan Non-UZA

**Service Area Statistics**

63 Square Miles  
200,169 Population

**Service Consumption**

3,822,572 Annual Passenger Miles (PMT)  
594,217 Annual Unlinked Trips (UPT)  
2,215 Average Weekday Unlinked Trips  
527 Average Saturday Unlinked Trips  
68 Average Sunday Unlinked Trips

**Service Supplied**

1,184,587 Annual Vehicle Revenue Miles (VRM)  
65,469 Annual Vehicle Revenue Hours (VRH)  
50 Vehicles Operated in Maximum Service (VOMS)  
80 Vehicles Available for Maximum Service (VAMS)

**Database Information**

NTDID: 50039  
Reporter Type: Full Reporter

**Financial Information**

**Sources of Operating Funds Expended**

Fares and Directly Generated	\$1,195,276	15.4%
Local Funds	\$1,668,596	21.6%
State Funds	\$2,525,356	32.6%
Federal Assistance	\$2,352,483	30.4%

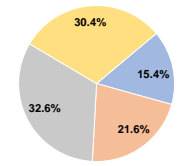
Total Operating Funds Expended \$7,741,711 100.0%

**Sources of Capital Funds Expended**

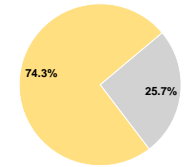
Fares and Directly Generated	\$0	0.0%
Local Funds	\$0	0.0%
State Funds	\$183,634	25.7%
Federal Assistance	\$529,670	74.3%

Total Capital Funds Expended \$713,304 100.0%

**Operating Funding Sources**



**Capital Funding Sources**



**Summary of Operating Expenses (OE)**

Labor	\$5,387,573	69.8%
Materials and Supplies	\$1,107,945	14.4%
Purchased Transportation	\$0	0.0%
Other Operating Expenses	\$1,217,747	15.8%
<b>Total Operating Expenses</b>	<b>\$7,713,265</b>	<b>100.0%</b>
Reconciling OE Cash Expenditures	\$28,446	
Purchased Transportation (Reported Separately)	\$0	

**Modal Characteristics**

**Modal Overview**

**Vehicles Operated in Maximum Service**

**Uses of Capital Funds**

Mode	Vehicles Operated in Maximum Service		Revenue Vehicles	Uses of Capital Funds			Other	Total
	Directly Operated	Purchased Transportation		Systems and Guideways	Facilities and Stations	Other		
Demand Response	20	-	\$467,709	\$0	\$0	\$0	\$467,709	
Bus	30	-	\$126,582	\$24,127	\$56,286	\$38,600	\$245,595	
<b>Total</b>	<b>50</b>	<b>-</b>	<b>\$594,291</b>	<b>\$24,127</b>	<b>\$56,286</b>	<b>\$38,600</b>	<b>\$713,304</b>	

**Operation Characteristics**

Mode	Operating Expenses	Fare Revenues	Uses of Capital Funds	Annual Passenger Miles	Annual Unlinked Trips	Annual Vehicle Revenue Miles	Annual Vehicle Revenue Hours	Fixed Guideway Directional Route Miles	Vehicles Available for Maximum Service	Vehicles Operated in Maximum Service	Percent Spare Vehicles	Average Fleet Age in Years <sup>a</sup>
Demand Response	\$1,657,622	\$183,032	\$467,709	165,859	34,226	129,333	13,815	0.0	27	20	25.9%	6.0
Bus	\$6,055,643	\$975,269	\$245,595	3,656,713	559,991	1,055,254	51,654	0.0	53	30	43.4%	15.1
<b>Total</b>	<b>\$7,713,265</b>	<b>\$1,158,301</b>	<b>\$713,304</b>	<b>3,822,572</b>	<b>594,217</b>	<b>1,184,587</b>	<b>65,469</b>	<b>0.0</b>	<b>80</b>	<b>50</b>	<b>37.5%</b>	

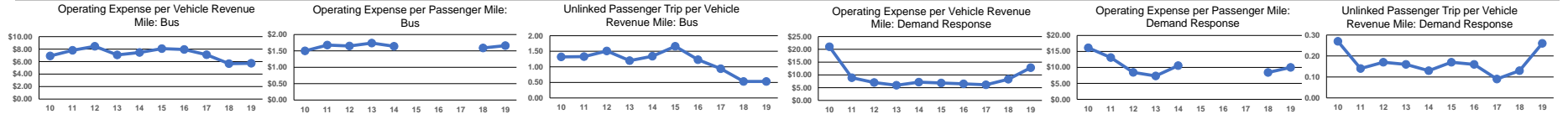
**Performance Measures**

**Service Efficiency**

Mode	Operating Expenses per Vehicle Revenue Mile	Operating Expenses per Vehicle Revenue Hour
Demand Response	\$12.82	\$119.99
Bus	\$5.74	\$117.23
<b>Total</b>	<b>\$6.51</b>	<b>\$117.82</b>

**Service Effectiveness**

Mode	Operating Expenses per Passenger Mile	Operating Expenses per Unlinked Passenger Trip	Unlinked Trips per Vehicle Revenue Mile	Unlinked Trips per Vehicle Revenue Hour
Demand Response	\$9.99	\$48.43	0.3	2.5
Bus	\$1.66	\$10.81	0.5	10.8
<b>Total</b>	<b>\$2.02</b>	<b>\$12.98</b>	<b>0.5</b>	<b>9.1</b>



**Notes:**

<sup>a</sup>Demand Response - Taxi (DT) and non-dedicated fleets do not report fleet age data.