

General Information

Urbanized Area (UZA) Statistics - 2010 Census

Anderson, IN
66 Square Miles
88,133 Population
330 Pop. Rank out of 498 UZAs

Other UZAs Served

0 Indiana Non-UZA

Service Area Statistics

45 Square Miles
55,076 Population

Service Consumption

237,451 Annual Unlinked Trips (UPT)

Service Supplied

434,687 Annual Vehicle Revenue Miles (VRM)
32,479 Annual Vehicle Revenue Hours (VRH)

Database Information

NTDID: 50041

Reporter Type: Reduced Reporter

Financial Information

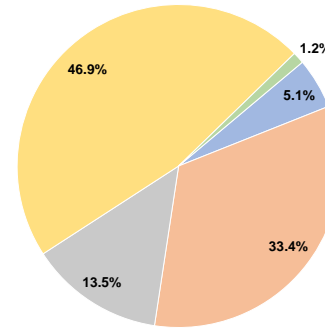
Sources of Operating Funds Expended

Fare Revenues	\$136,940	5.1%
Local Funds	\$900,000	33.4%
State Funds	\$362,502	13.5%
Federal Assistance	\$1,262,502	46.9%
Other Funds	\$31,195	1.2%
Total Operating Funds Expended	\$2,693,139	100.0%

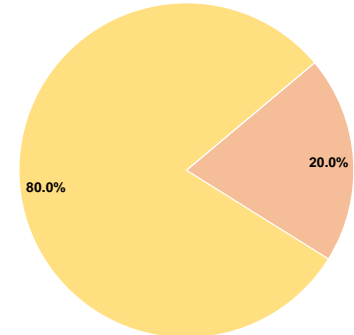
Sources of Capital Funds Expended

Fare Revenues	\$0	0.0%
Local Funds	\$1,200	20.0%
State Funds	\$0	0.0%
Federal Assistance	\$4,800	80.0%
Other Funds	\$0	0.0%
Total Capital Funds Expended	\$6,000	100.0%

Operating Funding Sources



Capital Funding Sources



Modal Characteristics

Operation Characteristics

Vehicles Operated at Maximum Service

Mode	Directly Operated	Purchased Transportation	Operating Expenses	Fare Revenues	Uses of Capital Funds	Annual Unlinked Trips	Annual Vehicle Revenue Miles	Annual Vehicle Revenue Hours	Average Fleet Age in Years ^a
Demand Response	8	-	\$686,407	\$41,670	\$0	22,879	99,657	8,487	2.5
Bus	10	-	\$2,006,732	\$95,270	\$6,000	214,572	335,030	23,992	6.2
Total	18	-	\$2,693,139	\$136,940	\$6,000	237,451	434,687	32,479	

Performance Measures

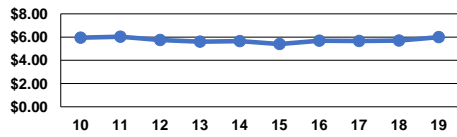
Service Efficiency

Mode	Operating Expenses per Vehicle Revenue Mile	Operating Expenses per Vehicle Revenue Hour
Demand Response	\$6.89	\$80.88
Bus	\$5.99	\$83.64
Total	\$6.20	\$82.92

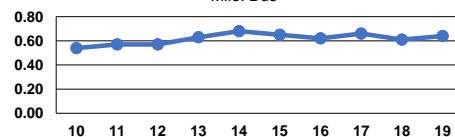
Service Effectiveness

Mode	Operating Expenses per Unlinked Passenger Trip	Unlinked Trips per Vehicle Revenue Mile	Unlinked Trips per Vehicle Revenue Hour
Demand Response	\$30.00	0.2	2.7
Bus	\$9.35	0.6	8.9
Total	\$11.34	0.5	7.3

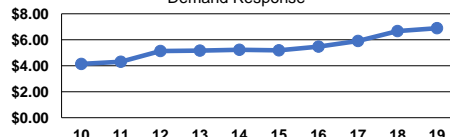
Operating Expense per Vehicle Revenue Mile: Bus



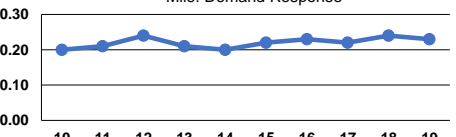
Unlinked Passenger Trips per Vehicle Revenue Mile: Bus



Operating Expense per Vehicle Revenue Mile: Demand Response



Unlinked Passenger Trips per Vehicle Revenue Mile: Demand Response



Notes:

^aDemand Response - Taxi (DT) and non-dedicated fleets do not report fleet age data.