

**General Information**

**Urbanized Area (UZA) Statistics - 2010 Census**

La Crosse, WI-MN  
51 **Square Miles**  
100,868 **Population**  
298 **Pop. Rank out of 498 UZAs**

**Service Area Statistics**

22 **Square Miles**  
34,237 **Population**

**Service Consumption**

54,083 **Annual Unlinked Trips (UPT)**

**Service Supplied**

419,545 **Annual Vehicle Revenue Miles (VRM)**  
30,774 **Annual Vehicle Revenue Hours (VRH)**

**Database Information**

NTDID: 50152

Reporter Type: Reduced Reporter

**Financial Information**

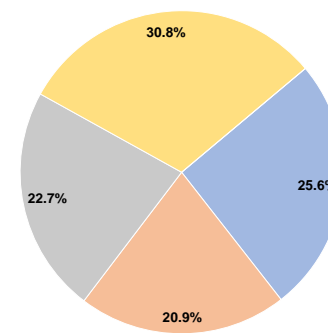
**Sources of Operating Funds Expended**

Fare Revenues	\$219,108	25.6%
Local Funds	\$179,206	20.9%
State Funds	\$194,675	22.7%
Federal Assistance	\$264,399	30.8%
Other Funds	\$0	0.0%
<b>Total Operating Funds Expended</b>	<b>\$857,388</b>	<b>100.0%</b>

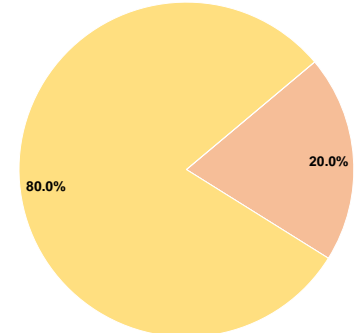
**Sources of Capital Funds Expended**

Fare Revenues	\$0	0.0%
Local Funds	\$22,872	20.0%
State Funds	\$0	0.0%
Federal Assistance	\$91,484	80.0%
Other Funds	\$0	0.0%
<b>Total Capital Funds Expended</b>	<b>\$114,356</b>	<b>100.0%</b>

**Operating Funding Sources**



**Capital Funding Sources**



**Modal Characteristics**

**Operation Characteristics**

**Vehicles Operated at Maximum Service**

Mode	Directly Operated	Purchased Transportation	Operating Expenses	Fare Revenues	Uses of Capital Funds	Annual Unlinked Trips	Annual Vehicle Revenue Miles	Annual Vehicle Revenue Hours	Average Fleet Age in Years <sup>a</sup>
Demand Response	-	9	\$857,388	\$219,108	\$114,356	54,083	419,545	30,774	4.1
<b>Total</b>	<b>-</b>	<b>9</b>	<b>\$857,388</b>	<b>\$219,108</b>	<b>\$114,356</b>	<b>54,083</b>	<b>419,545</b>	<b>30,774</b>	

**Performance Measures**

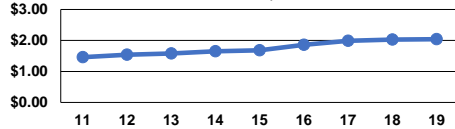
**Service Efficiency**

Mode	Operating Expenses per Vehicle Revenue Mile	Operating Expenses per Vehicle Revenue Hour
Demand Response	\$2.04	\$27.86
<b>Total</b>	<b>\$2.04</b>	<b>\$27.86</b>

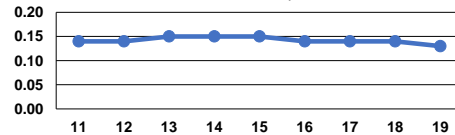
**Service Effectiveness**

Mode	Operating Expenses per Unlinked Passenger Trip	Unlinked Trips per Vehicle Revenue Mile	Unlinked Trips per Vehicle Revenue Hour
Demand Response	\$15.85	0.1	1.8
<b>Total</b>	<b>\$15.85</b>	<b>0.1</b>	<b>1.8</b>

Operating Expense per Vehicle Revenue Mile: Demand Response



Unlinked Passenger Trips per Vehicle Revenue Mile: Demand Response



**Notes:**

<sup>a</sup>Demand Response - Taxi (DT) and non-dedicated fleets do not report fleet age data.