

**General Information**

**Urbanized Area Statistics - 2010 Census**

Topeka, KS  
 80 Square Miles  
 150,003 Population  
 217 Pop. Rank out of 498 UZAs

**Service Consumption**

5,338,757 Annual Passenger Miles (PMT)  
 1,310,702 Annual Unlinked Trips (UPT)  
 4,527 Average Weekday Unlinked Trips<sup>1</sup>  
 2,462 Average Saturday Unlinked Trips<sup>1</sup>  
 0 Average Sunday Unlinked Trips<sup>1</sup>

**Database Information**

NTDID: 70014  
 Reporter Type: Full Reporter

**Service Area Statistics**

58 Square Miles  
 127,473 Population

**Service Supplied**

1,182,824 Annual Vehicle Revenue Miles (VRM)  
 87,291 Annual Vehicle Revenue Hours (VRH)  
 35 Vehicles Operated in Maximum Service (VOMS)  
 44 Vehicles Available for Maximum Service (VAMS)

**Modal Characteristics**

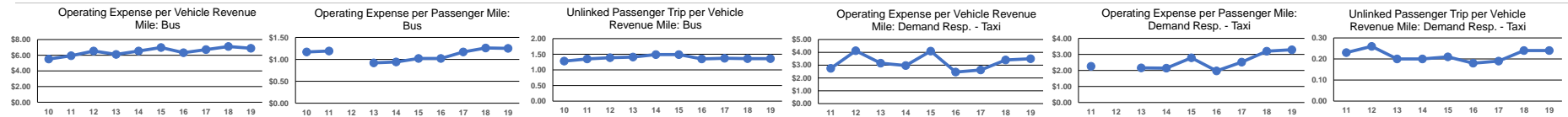
Modal Overview	Vehicles Operated in Maximum Service		Revenue Vehicles	Uses of Capital Funds				Total
	Directly Operated	Purchased Transportation		Systems and Guideways	Facilities and Stations	Other		
Demand Response	8	-	\$0	\$0	\$0	\$0	\$0	
Demand Response - Taxi	-	8	\$0	\$0	\$0	\$0	\$0	
Bus	19	-	\$0	\$0	\$691,553	\$87,947	\$779,500	
<b>Total</b>	<b>27</b>	<b>8</b>	<b>\$0</b>	<b>\$0</b>	<b>\$691,553</b>	<b>\$87,947</b>	<b>\$779,500</b>	

**Operation Characteristics**

Mode	Operating Expenses	Fare Revenues	Uses of Capital Funds	Annual Passenger Miles	Annual Unlinked Trips	Annual Vehicle Revenue Miles	Annual Vehicle Revenue Hours	Fixed Guideway Directional Route Miles	Vehicles Available for Maximum Service	Vehicles Operated in Maximum Service	Percent Spare Vehicles	Average Fleet Age in Years <sup>4</sup>
Demand Response	\$1,228,980	\$87,214	\$0	86,478	22,605	136,608	10,389	0.0	10	8	20.0%	6.0
Demand Response - Taxi	\$415,232	\$90,116	\$0	126,211	28,399	118,484	7,728	0.0	8	8	0.0%	0.0
Bus	\$6,396,653	\$910,497	\$779,500	5,126,068	1,259,698	927,732	69,174	0.0	26	19	26.9%	6.8
<b>Total</b>	<b>\$8,040,865</b>	<b>\$1,087,827</b>	<b>\$779,500</b>	<b>5,338,757</b>	<b>1,310,702</b>	<b>1,182,824</b>	<b>87,291</b>	<b>0.0</b>	<b>44</b>	<b>35</b>	<b>20.5%</b>	

**Performance Measures**

Mode	Service Efficiency		Mode	Service Effectiveness			
	Operating Expenses per Vehicle Revenue Mile	Operating Expenses per Vehicle Revenue Hour		Operating Expenses per Passenger Mile	Operating Expenses per Unlinked Passenger Trip	Unlinked Trips per Vehicle Revenue Mile	Unlinked Trips per Vehicle Revenue Hour
Demand Response	\$9.00	\$118.30	Demand Response	\$14.21	\$54.37	0.2	2.2
Demand Response - Taxi	\$3.50	\$53.73	Demand Response - Taxi	\$3.29	\$14.62	0.2	3.7
Bus	\$6.89	\$92.47	Bus	\$1.25	\$5.08	1.4	18.2
<b>Total</b>	<b>\$6.80</b>	<b>\$92.12</b>	<b>Total</b>	<b>\$1.51</b>	<b>\$6.13</b>	<b>1.1</b>	<b>15.0</b>



**Notes:**

<sup>4</sup>Demand Response - Taxi (DT) and non-dedicated fleets do not report fleet age data.  
<sup>1</sup>Average Unlinked Trips not available for Demand Response Taxi.

**Financial Information**

**Sources of Operating Funds Expended**

Fares and Directly Generated \$1,405,633 17.1%  
 Local Funds \$3,629,371 44.2%  
 State Funds \$749,854 9.1%  
 Federal Assistance \$2,431,069 29.6%

**Total Operating Funds Expended \$8,215,927 100.0%**

**Sources of Capital Funds Expended**

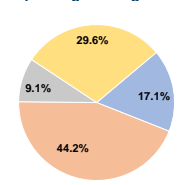
Fares and Directly Generated \$0 0.0%  
 Local Funds \$201,731 25.9%  
 State Funds \$0 0.0%  
 Federal Assistance \$577,769 74.1%

**Total Capital Funds Expended \$779,500 100.0%**

**Summary of Operating Expenses (OE)**

Labor \$5,582,050 69.4%  
 Materials and Supplies \$1,099,196 13.7%  
 Purchased Transportation \$320,198 4.0%  
 Other Operating Expenses \$1,039,421 12.9%  
**Total Operating Expenses \$8,040,865 100.0%**  
 Reconciling OE Cash Expenditures  
 Purchased Transportation (Reported Separately) \$0

**Operating Funding Sources**



**Capital Funding Sources**

