

General Information

Federally Recognized Tribal Statistical Areas

Ponca (NE) Trust Land, NE--IA

0 Pop. Rank out of 498 UZAs

Other UZAs Served

58 Omaha, NE-IA, 145 Lincoln, NE, 292 Sioux City, IA-NE-SD

Service Consumption

12,803 Annual Unlinked Trips (UPT)

Financial Information

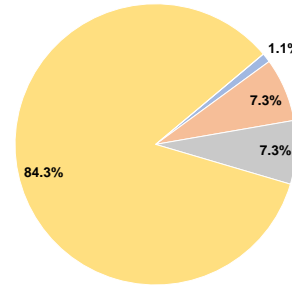
Sources of Operating Funds Expended

Fare Revenues	\$14,944	1.1%
Local Funds	\$101,827	7.3%
State Funds	\$101,827	7.3%
Federal Assistance	\$1,175,552	84.3%
Other Funds	\$0	0.0%
Total Operating Funds Expended	\$1,394,150	100.0%

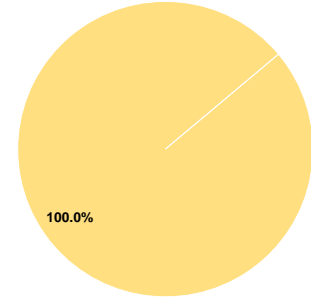
Sources of Capital Funds Expended

Fare Revenues	\$0	0.0%
Local Funds	\$0	0.0%
State Funds	\$0	0.0%
Federal Assistance	\$26,180	100.0%
Other Funds	\$0	0.0%
Total Capital Funds Expended	\$26,180	100.0%

Operating Funding Sources



Capital Funding Sources



Modal Characteristics

Operation Characteristics

Vehicles Operated at Maximum Service

Mode	Directly Operated	Purchased Transportation	Operating Expenses	Fare Revenues	Uses of Capital Funds	Annual Unlinked Trips	Annual Vehicle Revenue Miles	Annual Vehicle Revenue Hours	Average Fleet Age in Years ^a
Demand Response	21	-	\$1,394,150	\$14,944	\$26,180	12,803	301,460	13,551	2.7
Total	21	-	\$1,394,150	\$14,944	\$26,180	12,803	301,460	13,551	

Performance Measures

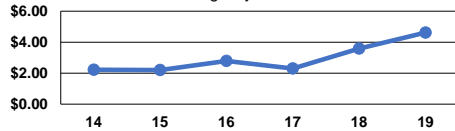
Service Efficiency

Mode	Operating Expenses per Vehicle Revenue Mile	Operating Expenses per Vehicle Revenue Hour
Demand Response	\$4.62	\$102.88
Total	\$4.62	\$102.88

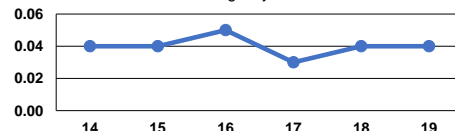
Service Effectiveness

Mode	Operating Expenses per Unlinked Passenger Trip	Unlinked Trips per Vehicle Revenue Mile	Unlinked Trips per Vehicle Revenue Hour
Demand Response	\$108.89	0.0	0.9
Total	\$108.89	0.0	0.9

Operating Expense per Vehicle Revenue Mile: Agency Total



Unlinked Passenger Trips per Vehicle Revenue Mile: Agency Total



Notes:

^aDemand Response - Taxi (DT) and non-dedicated fleets do not report fleet age data.