

**General Information**

**Federally Recognized Tribal Statistical Areas**

Uintah and Ouray Reservation and Off-Reservation Trust Land, UT

**Service Consumption**

3,295 Annual Unlinked Trips (UPT)

**Service Supplied**

49,308 Annual Vehicle Revenue Miles (VRM)

1,590 Annual Vehicle Revenue Hours (VRH)

**Database Information**

NTDID: 88200

Reporter Type: Tribal Reporter

**Financial Information**

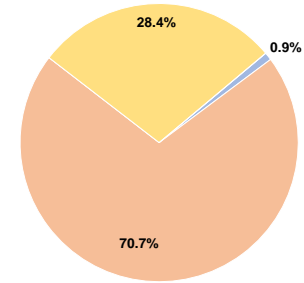
**Sources of Operating Funds Expended**

Fare Revenues	\$2,406	0.9%
Local Funds	\$187,631	70.7%
State Funds	\$0	0.0%
Federal Assistance	\$75,503	28.4%
Other Funds	\$0	0.0%
<b>Total Operating Funds Expended</b>	<b>\$265,540</b>	<b>100.0%</b>

**Sources of Capital Funds Expended**

Fare Revenues	\$0
Local Funds	\$0
State Funds	\$0
Federal Assistance	\$0
Other Funds	\$0
<b>Total Capital Funds Expended</b>	<b>\$0</b>

**Operating Funding Sources**



**Modal Characteristics**

**Operation Characteristics**

**Vehicles Operated at Maximum Service**

Mode	Directly Operated	Purchased Transportation	Operating Expenses	Fare Revenues	Uses of Capital Funds	Annual Unlinked Trips	Annual Vehicle Revenue Miles	Annual Vehicle Revenue Hours	Average Fleet Age in Years <sup>a</sup>
Bus	6	-	\$265,540	\$2,406	\$0	3,295	49,308	1,590	9.8
<b>Total</b>	<b>6</b>	<b>-</b>	<b>\$265,540</b>	<b>\$2,406</b>	<b>\$0</b>	<b>3,295</b>	<b>49,308</b>	<b>1,590</b>	

**Performance Measures**

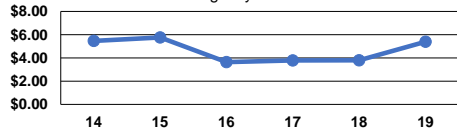
**Service Efficiency**

Mode	Operating Expenses per Vehicle Revenue Mile	Operating Expenses per Vehicle Revenue Hour
Bus	\$5.39	\$167.01
<b>Total</b>	<b>\$5.39</b>	<b>\$167.01</b>

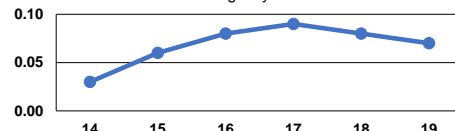
**Service Effectiveness**

Mode	Operating Expenses per Unlinked Passenger Trip	Unlinked Trips per Vehicle Revenue Mile	Unlinked Trips per Vehicle Revenue Hour
Bus	\$80.59	0.1	2.1
<b>Total</b>	<b>\$80.59</b>	<b>0.1</b>	<b>2.1</b>

Operating Expense per Vehicle Revenue Mile: Agency Total



Unlinked Passenger Trips per Vehicle Revenue Mile: Agency Total



**Notes:**

<sup>a</sup>Demand Response - Taxi (DT) and non-dedicated fleets do not report fleet age data.