

Hopi Tribe dba Hopi Senom Transit

2019 Annual Agency Profile

Transit Administrator: Mr. Donovan Gomez
928-734-3231

General Information

Federally Recognized Tribal Statistical Areas

Navajo Nation Reservation and Off-Reservation Trust Land, AZ--NM--
UT - Hopi Reservation and Off-Reservation Trust Land, AZ

Service Consumption

29,956 Annual Unlinked Trips (UPT)

Service Supplied

302,570 Annual Vehicle Revenue Miles (VRM)

7,720 Annual Vehicle Revenue Hours (VRH)

Database Information

NTDID: 99382

Reporter Type: Tribal Reporter

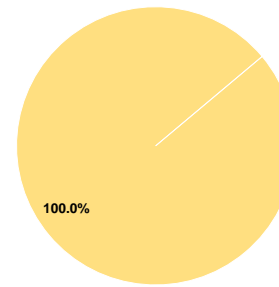
Financial Information

Sources of Operating Funds Expended

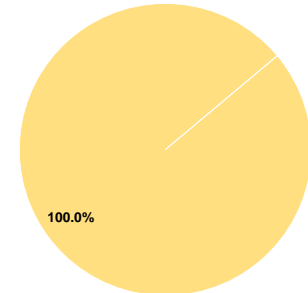
Fare Revenues	\$0	0.0%
Local Funds	\$0	0.0%
State Funds	\$0	0.0%
Federal Assistance	\$474,510	100.0%
Other Funds	\$0	0.0%

Total Operating Funds Expended \$474,510 100.0%

Operating Funding Sources



Capital Funding Sources



Sources of Capital Funds Expended

Fare Revenues	\$0	0.0%
Local Funds	\$0	0.0%
State Funds	\$0	0.0%
Federal Assistance	\$122,739	100.0%
Other Funds	\$0	0.0%

Total Capital Funds Expended \$122,739 100.0%

Modal Characteristics

Operation Characteristics

Vehicles Operated at Maximum Service

Mode	Directly Operated	Purchased Transportation	Operating Expenses	Fare Revenues	Uses of Capital Funds	Annual Unlinked Trips	Annual Vehicle Revenue Miles	Annual Vehicle Revenue Hours	Average Fleet Age in Years ^a
Bus	5	-	\$474,510	\$0	\$122,739	29,956	302,570	7,720	4.9
Total	5	-	\$474,510	\$0	\$122,739	29,956	302,570	7,720	

Performance Measures

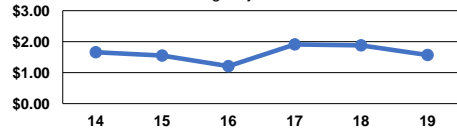
Service Efficiency

Mode	Operating Expenses per Vehicle Revenue Mile	Operating Expenses per Vehicle Revenue Hour
Bus	\$1.57	\$61.47
Total	\$1.57	\$61.47

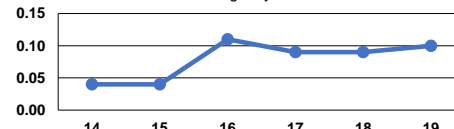
Service Effectiveness

Mode	Operating Expenses per Unlinked Passenger Trip	Unlinked Trips per Vehicle Revenue Mile	Unlinked Trips per Vehicle Revenue Hour
Bus	\$15.84	0.1	3.9
Total	\$15.84	0.1	3.9

Operating Expense per Vehicle Revenue Mile: Agency Total



Unlinked Passenger Trips per Vehicle Revenue Mile: Agency Total



Notes:

^aDemand Response - Taxi (DT) and non-dedicated fleets do not report fleet age data.