

General Information

Urbanized Area (UZA) Statistics - 2010 Census

Tulalip Reservation and Off-Reservation Trust Land, WA

0 Square Miles
 0 Population
 0 Pop. Rank out of 498 UZAs

Other UZAs Served

0 Washington Non-UZA

Service Area Statistics

19 Square Miles
 5,303 Population

Service Consumption

728 Annual Unlinked Trips (UPT)

Service Supplied

7,409 Annual Vehicle Revenue Miles (VRM)
 687 Annual Vehicle Revenue Hours (VRH)

Database Information

NTDID: 00060
 Reporter Type: Tribal Reporter

Asset Type: Tier II
 Sponsor NTDID:

Financial Information

Sources of Operating Funds Expended

Fare Revenues	\$0	0.0%
Local Funds	\$13,524	39.0%
State Funds	\$0	0.0%
Federal Assistance	\$21,187	61.0%
Other Funds	\$0	0.0%
Total Operating Funds Expended	\$34,711	100.0%

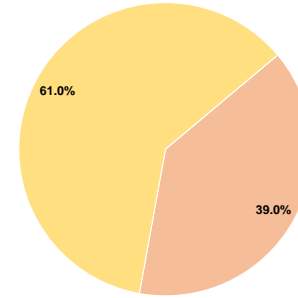
Sources of Capital Funds Expended

Fare Revenues	\$0	0.0%
Local Funds	\$24,103	20.0%
State Funds	\$0	0.0%
Federal Assistance	\$96,410	80.0%
Other Funds	\$0	0.0%
Total Capital Funds Expended	\$120,513	100.0%

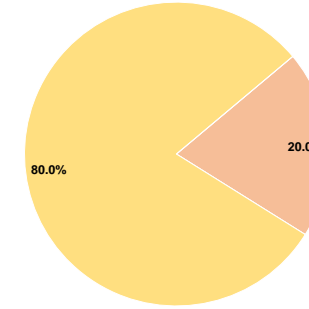
Assets

Revenue Vehicles	3
Service Vehicles	0
Facilities	0

Operating Funding Sources



Capital Funding Sources



Performance Measure Targets - 2021

Performance Measure - Asset Type - Target % not in State of Good Repair
 Rolling Stock - CU - Cutaway - 0%

Modal Characteristics

Operation Characteristics

Vehicles Operated at Maximum Service

Mode	Directly Operated	Purchased Transportation	Operating Expenses	Fare Revenues	Uses of Capital Funds	Annual Unlinked Trips	Annual Vehicle Revenue Miles	Annual Vehicle Revenue Hours	Average Fleet Age in Years ^a
Bus	1	-	\$34,711	\$0	\$120,513	728	7,409	687	6.7
Total	1	-	\$34,711	\$0	\$120,513	728	7,409	687	

Performance Measures

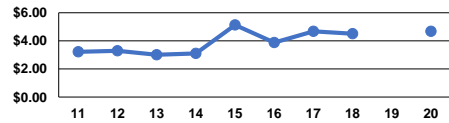
Service Efficiency

Mode	Operating Expenses per Vehicle Revenue Mile	Operating Expenses per Vehicle Revenue Hour
Bus	\$4.68	\$50.53
Total	\$4.68	\$50.53

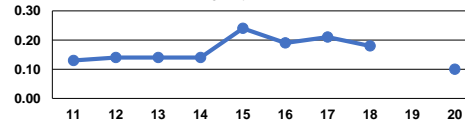
Service Effectiveness

Mode	Operating Expenses per Unlinked Passenger Trip	Unlinked Trips per Vehicle Revenue Mile	Unlinked Trips per Vehicle Revenue Hour
Bus	\$47.68	0.1	1.1
Total	\$47.68	0.1	1.1

Operating Expense per Vehicle Revenue Mile: Agency Total



Unlinked Passenger Trips per Vehicle Revenue Mile: Agency Total



Notes:

^aDemand Response - Taxi (DT) and non-dedicated fleets do not report fleet age data.