

General Information

Federally Recognized Tribal Statistical Areas
 Lummi Reservation, WA

Service Consumption
 5,020 Annual Unlinked Trips (UPT)

Service Supplied
 18,812 Annual Vehicle Revenue Miles (VRM)
 2,445 Annual Vehicle Revenue Hours (VRH)

Database Information
 NTDID: 00095
 Reporter Type: Tribal Reporter

Asset Type: Tier II
 Sponsor NTDID:

Assets
 Revenue Vehicles 7
 Service Vehicles 0
 Facilities 1

Financial Information

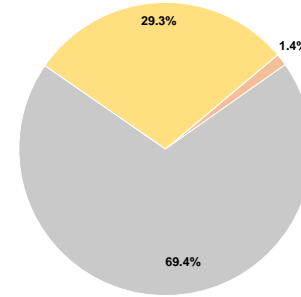
Sources of Operating Funds Expended

Fare Revenues	\$0	0.0%
Local Funds	\$4,322	1.4%
State Funds	\$222,077	69.4%
Federal Assistance	\$93,641	29.3%
Other Funds	\$0	0.0%
Total Operating Funds Expended	\$320,040	100.0%

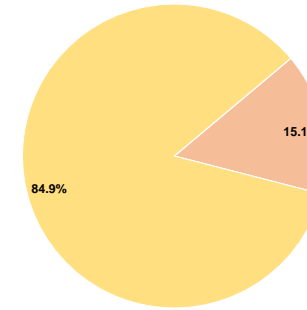
Sources of Capital Funds Expended

Fare Revenues	\$0	0.0%
Local Funds	\$31,668	15.1%
State Funds	\$0	0.0%
Federal Assistance	\$177,753	84.9%
Other Funds	\$0	0.0%
Total Capital Funds Expended	\$209,421	100.0%

Operating Funding Sources



Capital Funding Sources



Performance Measure Targets - 2021

Performance Measure - Asset Type - Target % not in State of Good Repair
 Facility - Administrative / Maintenance Facilities - 0%
 Rolling Stock - BU - Bus - 0%
 Rolling Stock - CU - Cutaway - 33%

Modal Characteristics

Operation Characteristics

Vehicles Operated at Maximum Service

Mode	Directly Operated	Purchased Transportation	Operating Expenses	Fare Revenues	Uses of Capital Funds	Annual Unlinked Trips	Annual Vehicle Revenue Miles	Annual Vehicle Revenue Hours	Average Fleet Age in Years ^a
Bus	2	-	\$320,040	\$0	\$209,421	5,020	18,812	2,445	6.6
Total	2	-	\$320,040	\$0	\$209,421	5,020	18,812	2,445	

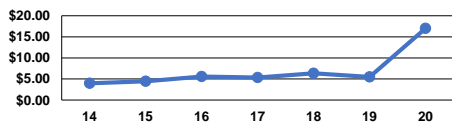
Performance Measures

Service Efficiency

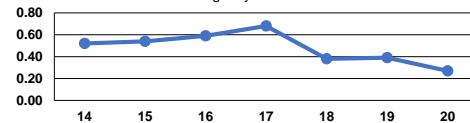
Mode	Operating Expenses per Vehicle Revenue Mile	Operating Expenses per Vehicle Revenue Hour	Mode	Operating Expenses per Unlinked Passenger Trip	Unlinked Trips per Vehicle Revenue Mile	Unlinked Trips per Vehicle Revenue Hour
Bus	\$17.01	\$130.90	Bus	\$63.75	0.3	2.1
Total	\$17.01	\$130.90	Total	\$63.75	0.3	2.1

Service Effectiveness

Operating Expense per Vehicle Revenue Mile: Agency Total



Unlinked Passenger Trips per Vehicle Revenue Mile: Agency Total



Notes:

^aDemand Response - Taxi (DT) and non-dedicated fleets do not report fleet age data.