

**General Information**

**Urbanized Area (UZA) Statistics - 2010 Census**

Boston, MA-NH-RI  
 1,873 Square Miles  
 4,181,019 Population  
 10 Pop. Rank out of 498 UZAs

**Service Area Statistics**

25 Square Miles  
 42,312 Population

**Service Consumption**

12,268 Annual Unlinked Trips (UPT)

**Service Supplied**

46,826 Annual Vehicle Revenue Miles (VRM)  
 3,108 Annual Vehicle Revenue Hours (VRH)

**Database Information**

NTDID: 10179  
 Reporter Type: Reduced Reporter  
 Asset Type: Tier II  
 Sponsor NTDID:

**Financial Information**

**Sources of Operating Funds Expended**

Fare Revenues	\$2,501	1.6%
Local Funds	\$98,628	63.5%
State Funds	\$54,079	34.8%
Federal Assistance	\$0	0.0%
Other Funds	\$0	0.0%
<b>Total Operating Funds Expended</b>	<b>\$155,208</b>	<b>100.0%</b>

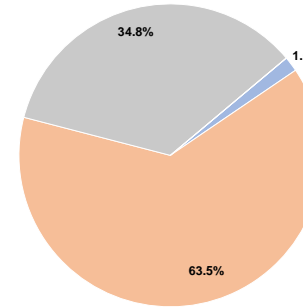
**Sources of Capital Funds Expended**

Fare Revenues	\$0
Local Funds	\$0
State Funds	\$0
Federal Assistance	\$0
Other Funds	\$0
<b>Total Capital Funds Expended</b>	<b>\$0</b>

**Assets**

Revenue Vehicles	3
Service Vehicles	0
Facilities	0

**Operating Funding Sources**



**Performance Measure Targets - 2021**

Performance Measure - Asset Type - Target % not in State of Good Repair

**Modal Characteristics**

**Operation Characteristics**

**Vehicles Operated at Maximum Service**

Mode	Directly Operated	Purchased Transportation	Operating Expenses	Fare Revenues	Uses of Capital Funds	Annual Unlinked Trips	Annual Vehicle Revenue Miles	Annual Vehicle Revenue Hours	Average Fleet Age in Years <sup>a</sup>
Bus	-	3	\$155,208	\$2,501	\$0	12,268	46,826	3,108	4.0
<b>Total</b>	-	<b>3</b>	<b>\$155,208</b>	<b>\$2,501</b>	<b>\$0</b>	<b>12,268</b>	<b>46,826</b>	<b>3,108</b>	

**Performance Measures**

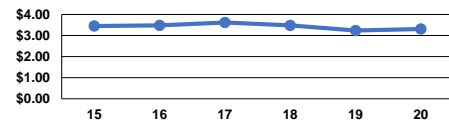
**Service Efficiency**

Mode	Operating Expenses per Vehicle Revenue Mile	Operating Expenses per Vehicle Revenue Hour
Bus	\$3.31	\$49.94
<b>Total</b>	<b>\$3.31</b>	<b>\$49.94</b>

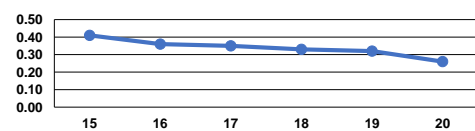
**Service Effectiveness**

Mode	Operating Expenses per Unlinked Passenger Trip	Unlinked Trips per Vehicle Revenue Mile	Unlinked Trips per Vehicle Revenue Hour
Bus	\$12.65	0.3	3.9
<b>Total</b>	<b>\$12.65</b>	<b>0.3</b>	<b>3.9</b>

Operating Expense per Vehicle Revenue Mile: Bus



Unlinked Passenger Trips per Vehicle Revenue Mile: Bus



**Notes:**

<sup>a</sup>Demand Response - Taxi (DT) and non-dedicated fleets do not report fleet age data.