

General Information

Urbanized Area Statistics - 2010 Census

Poughkeepsie-Newburgh, NY-NJ
 327 Square Miles
 423,566 Population
 89 Pop. Rank out of 498 UZAs

Other UZAs Served

0 New York Non-UZA

Service Area Statistics

175 Square Miles
 351,997 Population

Service Consumption

2,785,158 Annual Passenger Miles (PMT)
 480,243 Annual Unlinked Trips (UPT)
 1,656 Average Weekday Unlinked Trips
 1,394 Average Saturday Unlinked Trips
 257 Average Sunday Unlinked Trips

Service Supplied

1,088,683 Annual Vehicle Revenue Miles (VRM)
 71,577 Annual Vehicle Revenue Hours (VRH)
 47 Vehicles Operated in Maximum Service (VOMS)
 52 Vehicles Available for Maximum Service (VAMS)

Database Information

NTDID: 20010
 Reporter Type: Full Reporter
 Asset Type: Tier II
 Sponsor NTDID:

Assets

Revenue Vehicles 56
 Service Vehicles 7
 Facilities 1
 Track Miles
 Lane Miles

Modal Characteristics

Modal Overview

Mode	Vehicles Operated in Maximum Service		Uses of Capital Funds					Total
	Directly Operated	Purchased Transportation	Revenue Vehicles	Systems and Guideways	Facilities and Stations	Other		
Demand Response	14	-	\$0	\$0	\$0	\$0	\$0	
Bus	33	-	\$49,770	\$65,000	\$32,845	\$50,009	\$197,624	
Total	47	-	\$49,770	\$65,000	\$32,845	\$50,009	\$197,624	

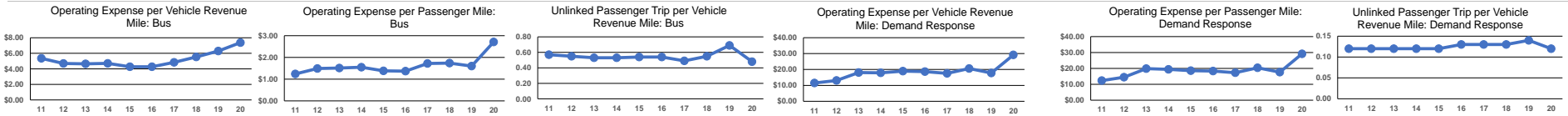
Operation Characteristics

Mode	Operating Expenses	Fare Revenues	Uses of Capital Funds	Annual Passenger Miles	Annual Unlinked Trips	Annual Vehicle Revenue Miles	Annual Vehicle Revenue Hours	Fixed Guideway Directional Route Miles	Vehicles Available for Maximum Service	Vehicles Operated in Maximum Service	Percent Spare Vehicles	Average Fleet Age in Years ^a
Demand Response	\$3,041,694	\$25,208	\$0	104,250	12,289	104,233	7,149	0.0	15	14	7.1%	5.8
Bus	\$7,267,158	\$424,067	\$197,624	2,680,908	467,954	984,450	64,428	0.0	37	33	12.1%	5.2
Total	\$10,308,852	\$449,275	\$197,624	2,785,158	480,243	1,088,683	71,577	0.0	52	47	9.6%	

Performance Measures

Service Efficiency

Mode	Operating Expenses per Vehicle Revenue Mile	Operating Expenses per Vehicle Revenue Hour	Mode	Operating Expenses per Passenger Mile	Operating Expenses per Unlinked Passenger Trip	Unlinked Trips per Vehicle Revenue Mile	Unlinked Trips per Vehicle Revenue Hour
Demand Response	\$29.18	\$425.47	Demand Response	\$29.18	\$247.51	0.1	1.7
Bus	\$7.38	\$112.80	Bus	\$2.71	\$15.53	0.5	7.3
Total	\$9.47	\$144.02	Total	\$3.70	\$21.47	0.4	6.7



Notes:

^aDemand Response - Taxi (DT) and non-dedicated fleets do not report fleet age data.
¹Includes data for a contract with another reporter.
^{*}This agency has a purchased transportation relationship in which they sell service to City of Poughkeepsie (NTDID: 20009), and in which the data are captured in this report for mode DR/DO.

Financial Information

Sources of Operating Funds Expended

Fares and Directly Generated \$614,225 5.9%
 Local Funds \$1,011,403 9.8%
 State Funds \$3,523,490 34.0%
 Federal Assistance \$5,209,219 50.3%

Total Operating Funds Expended \$10,358,337 100.0%

Sources of Capital Funds Expended

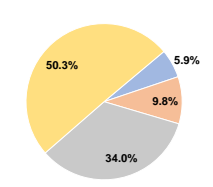
Fares and Directly Generated \$0 0.0%
 Local Funds \$19,762 10.0%
 State Funds \$19,762 10.0%
 Federal Assistance \$158,100 80.0%

Total Capital Funds Expended \$197,624 100.0%

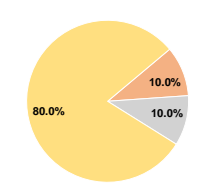
Summary of Operating Expenses (OE)

Labor \$7,831,038 76.0%
 Materials and Supplies \$837,307 8.1%
 Purchased Transportation \$0 0.0%
 Other Operating Expenses \$1,640,507 15.9%
 Total Operating Expenses \$10,308,852 100.0%
 Reconciling OE Cash Expenditures \$49,485
 Purchased Transportation (Reported Separately) \$0

Operating Funding Sources



Capital Funding Sources



Performance Measure Targets - 2021

Performance Measure - Asset Type - Target % not in State of Good Repair
 Equipment - Automobiles - 50%
 Equipment - Trucks and other Rubber Tire Vehicles - 50%
 Facility - Administrative / Maintenance Facilities - 15%
 Facility - Passenger / Parking Facilities - 0%
 Rolling Stock - BR - Over-the-road Bus - 7%
 Rolling Stock - BU - Bus - 6%
 Rolling Stock - CU - Cutaway - 20%
 Rolling Stock - MV - Minivan - 100%
 Rolling Stock - SV - Sports Utility Vehicle - 90%
 Rolling Stock - VN - Van - 0%