

**General Information**

**Urbanized Area (UZA) Statistics - 2010 Census**

New York-Newark, NY-NJ-CT  
 3,450 **Square Miles**  
 18,351,295 **Population**  
 1 **Pop. Rank out of 498 UZAs**

**Service Area Statistics**

179 **Square Miles**  
 300,173 **Population**

**Service Consumption**

50,238 **Annual Unlinked Trips (UPT)**

**Service Supplied**

189,200 **Annual Vehicle Revenue Miles (VRM)**  
 11,061 **Annual Vehicle Revenue Hours (VRH)**

**Database Information**

**NTDID:** 20085 **Asset Type:** Tier II  
**Reporter Type:** Reduced Reporter **Sponsor NTDID:** 2R02

**Financial Information**

**Sources of Operating Funds Expended**

Fare Revenues	\$22,910	2.0%
Local Funds	\$875,791	75.3%
State Funds	\$264,548	22.7%
Federal Assistance	\$0	0.0%
Other Funds	\$0	0.0%
<b>Total Operating Funds Expended</b>	<b>\$1,163,249</b>	<b>100.0%</b>

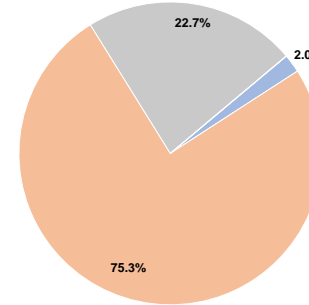
**Sources of Capital Funds Expended**

Fare Revenues	\$0
Local Funds	\$0
State Funds	\$0
Federal Assistance	\$0
Other Funds	\$0
<b>Total Capital Funds Expended</b>	<b>\$0</b>

**Assets**

Revenue Vehicles	8
Service Vehicles	0
Facilities	0

**Operating Funding Sources**



**Performance Measure Targets - 2021**

- Performance Measure - Asset Type - Target % not in State of Good Repair
- Equipment - Automobiles - 50%
- Equipment - Trucks and other Rubber Tire Vehicles - 50%
- Facility - Administrative / Maintenance Facilities - 15%
- Facility - Passenger / Parking Facilities - 0%
- Rolling Stock - BR - Over-the-road Bus - 7%
- Rolling Stock - BU - Bus - 6%
- Rolling Stock - CU - Cutaway - 20%
- Rolling Stock - MV - Minivan - 100%
- Rolling Stock - SV - Sports Utility Vehicle - 90%
- Rolling Stock - VN - Van - 0%

**Modal Characteristics**

**Operation Characteristics**

**Vehicles Operated at Maximum Service**

Mode	Directly Operated	Purchased Transportation	Operating Expenses	Fare Revenues	Uses of Capital Funds	Annual Unlinked Trips	Annual Vehicle Revenue Miles	Annual Vehicle Revenue Hours	Average Fleet Age in Years <sup>a</sup>
Bus	8	-	\$1,163,249	\$22,910	\$0	50,238	189,200	11,061	12.1
<b>Total</b>	<b>8</b>	<b>-</b>	<b>\$1,163,249</b>	<b>\$22,910</b>	<b>\$0</b>	<b>50,238</b>	<b>189,200</b>	<b>11,061</b>	

**Performance Measures**

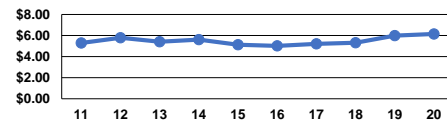
**Service Efficiency**

Mode	Operating Expenses per Vehicle Revenue Mile	Operating Expenses per Vehicle Revenue Hour
Bus	\$6.15	\$105.17
<b>Total</b>	<b>\$6.15</b>	<b>\$105.17</b>

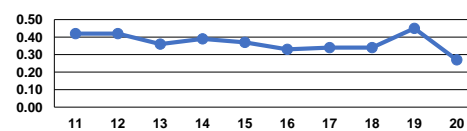
**Service Effectiveness**

Mode	Operating Expenses per Unlinked Passenger Trip	Unlinked Trips per Vehicle Revenue Mile	Unlinked Trips per Vehicle Revenue Hour
Bus	\$23.15	0.3	4.5
<b>Total</b>	<b>\$23.15</b>	<b>0.3</b>	<b>4.5</b>

Operating Expense per Vehicle Revenue Mile: Bus



Unlinked Passenger Trips per Vehicle Revenue Mile: Bus



**Notes:**

<sup>a</sup>Demand Response - Taxi (DT) and non-dedicated fleets do not report fleet age data.