

General Information

Urbanized Area Statistics - 2010 Census
 New York-Newark, NY-NJ-CT
 3,450 Square Miles
 18,351,295 Population
 1 Pop. Rank out of 498 UZAs

Service Consumption
 6,483,594 Annual Passenger Miles (PMT)
 2,341,334 Annual Unlinked Trips (UPT)
 9,827 Average Weekday Unlinked Trips
 9,005 Average Saturday Unlinked Trips
 5,838 Average Sunday Unlinked Trips

Database Information
 NTDID: 20190
 Reporter Type: Full Reporter
 Asset Type: Tier II
 Sponsor NTDID:

Service Area Statistics
 776 Square Miles
 3,658,455 Population

Service Supplied
 507,251 Annual Vehicle Revenue Miles (VRM)
 65,937 Annual Vehicle Revenue Hours (VRH)
 78 Vehicles Operated in Maximum Service (VOMS)
 78 Vehicles Available for Maximum Service (VAMS)

Assets
 Revenue Vehicles 104
 Service Vehicles 4
 Facilities 14
 Track Miles
 Lane Miles

Modal Characteristics

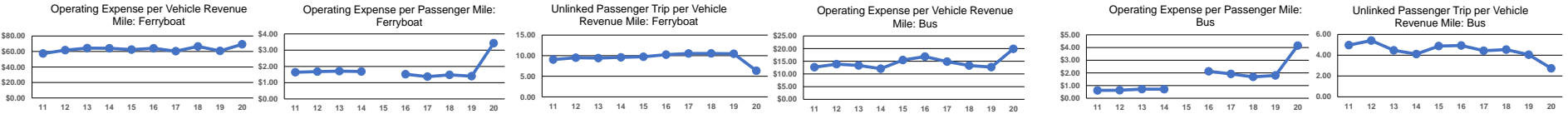
Modal Overview	Vehicles Operated in Maximum Service		Uses of Capital Funds					Total
	Directly Operated	Purchased Transportation	Revenue Vehicles	Systems and Guideways	Facilities and Stations	Other		
Ferryboat	20	-	\$3,692,094	\$216,859	\$714,724	\$117,390	\$4,741,067	
Bus	58	-	\$2,287,110	\$237,122	\$0	\$0	\$2,524,232	
Total	78	-	\$5,979,204	\$453,981	\$714,724	\$117,390	\$7,265,299	

Operation Characteristics

Mode	Operating Expenses	Fare Revenues	Uses of Capital Funds	Annual Passenger Miles	Annual Unlinked Trips	Annual Vehicle Revenue Miles	Annual Vehicle Revenue Hours	Fixed Guideway Directional Route Miles	Vehicles Available for Maximum Service	Vehicles Operated in Maximum Service	Percent Spare Vehicles	Average Fleet Age in Years ^a
Ferryboat	\$18,247,558	\$14,866,804	\$4,741,067	5,313,175	1,671,710	263,253	19,868	70.5	20	20	0.0%	19.5
Bus	\$4,860,976	\$0	\$2,524,232	1,170,419	669,624	243,998	46,069	0.0	58	58	0.0%	2.4
Total	\$23,108,534	\$14,866,804	\$7,265,299	6,483,594	2,341,334	507,251	65,937	70.5	78	78	0.0%	

Performance Measures

Mode	Service Efficiency		Mode	Service Effectiveness			
	Operating Expenses per Vehicle Revenue Mile	Operating Expenses per Vehicle Revenue Hour		Operating Expenses per Passenger Mile	Operating Expenses per Unlinked Passenger Trip	Unlinked Trips per Vehicle Revenue Mile	Unlinked Trips per Vehicle Revenue Hour
Ferryboat	\$69.32	\$918.44	Ferryboat	\$3.43	\$10.92	6.4	84.1
Bus	\$19.92	\$105.52	Bus	\$4.15	\$7.26	2.7	14.5
Total	\$45.56	\$350.46	Total	\$3.56	\$9.87	4.6	35.5

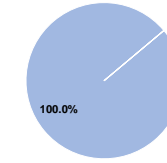


Notes:
^aDemand Response - Taxi (DT) and non-dedicated fleets do not report fleet age data.

Financial Information

Sources of Operating Funds Expended
 Fares and Directly Generated \$24,814,790 100.0%
 Local Funds \$0 0.0%
 State Funds \$0 0.0%
 Federal Assistance \$0 0.0%

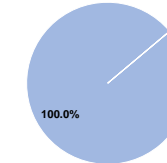
Operating Funding Sources



Total Operating Funds Expended \$24,814,790 100.0%

Sources of Capital Funds Expended
 Fares and Directly Generated \$7,265,299 100.0%
 Local Funds \$0 0.0%
 State Funds \$0 0.0%
 Federal Assistance \$0 0.0%

Capital Funding Sources



Total Capital Funds Expended \$7,265,299 100.0%

Summary of Operating Expenses (OE)

Labor \$13,233,963 57.3%
 Materials and Supplies \$3,740,118 16.2%
 Purchased Transportation \$0 0.0%
 Other Operating Expenses \$6,134,453 26.5%
Total Operating Expenses \$23,108,534 100.0%
 Reconciling OE Cash Expenditures (Reported Separately) \$1,706,256
 Purchased Transportation (Reported Separately) \$0

Fixed Guideway Directional Route Miles	Vehicles Available for Maximum Service	Vehicles Operated in Maximum Service	Percent Spare Vehicles	Average Fleet Age in Years ^a
70.5	20	20	0.0%	19.5
0.0	58	58	0.0%	2.4
70.5	78	78	0.0%	