

General Information

Urbanized Area (UZA) Statistics - 2010 Census

Twin Rivers-Hightstown, NJ
 35 Square Miles
 64,037 Population
 429 Pop. Rank out of 498 UZAs

Service Area Statistics

19 Square Miles
 27,190 Population

Service Consumption

2,762 Annual Unlinked Trips (UPT)

Service Supplied

15,964 Annual Vehicle Revenue Miles (VRM)
 766 Annual Vehicle Revenue Hours (VRH)

Database Information

NTDID: 20194
 Reporter Type: Reduced Reporter

Asset Type: Tier II
 Sponsor NTDID:

Financial Information

Sources of Operating Funds Expended

Fare Revenues	\$1,735	0.9%
Local Funds	\$48,074	24.8%
State Funds	\$48,074	24.8%
Federal Assistance	\$96,148	49.6%
Other Funds	\$0	0.0%
Total Operating Funds Expended	\$194,031	100.0%

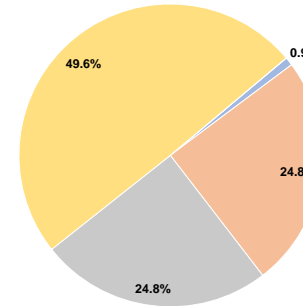
Sources of Capital Funds Expended

Fare Revenues	\$0
Local Funds	\$0
State Funds	\$0
Federal Assistance	\$0
Other Funds	\$0
Total Capital Funds Expended	\$0

Assets

Revenue Vehicles	3
Service Vehicles	0
Facilities	1

Operating Funding Sources



Performance Measure Targets - 2021

Performance Measure - Asset Type - Target % not in State of Good Repair
 Facility - Administrative / Maintenance Facilities - 0%
 Rolling Stock - BU - Bus - 0%
 Rolling Stock - CU - Cutaway - 100%

Modal Characteristics

Operation Characteristics

Vehicles Operated at Maximum Service

Mode	Directly Operated	Purchased Transportation	Operating Expenses	Fare Revenues	Uses of Capital Funds	Annual Unlinked Trips	Annual Vehicle Revenue Miles	Annual Vehicle Revenue Hours	Average Fleet Age in Years ^a
Bus	1	1	\$194,031	\$1,735	\$0	2,762	15,964	766	7.0
Total	1	1	\$194,031	\$1,735	\$0	2,762	15,964	766	

Performance Measures

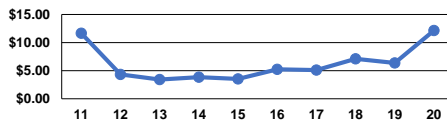
Service Efficiency

Mode	Operating Expenses per Vehicle Revenue Mile	Operating Expenses per Vehicle Revenue Hour
Bus	\$12.15	\$253.30
Total	\$12.15	\$253.30

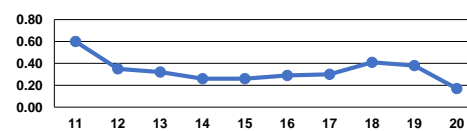
Service Effectiveness

Mode	Operating Expenses per Unlinked Passenger Trip	Unlinked Trips per Vehicle Revenue Mile	Unlinked Trips per Vehicle Revenue Hour
Bus	\$70.25	0.2	3.6
Total	\$70.25	0.2	3.6

Operating Expense per Vehicle Revenue Mile: Bus



Unlinked Passenger Trips per Vehicle Revenue Mile: Bus



Notes:

^aDemand Response - Taxi (DT) and non-dedicated fleets do not report fleet age data.