

General Information

Urbanized Area (UZA) Statistics - 2010 Census

Philadelphia, PA-NJ-DE-MD
 1,981 **Square Miles**
 5,441,567 **Population**
 5 **Pop. Rank out of 498 UZAs**

Other UZAs Served

310 Vineland, NJ, 0 New Jersey Non-UZA

Service Area Statistics

678 **Square Miles**
 149,527 **Population**

Service Consumption

23,417 **Annual Unlinked Trips (UPT)**

Service Supplied

109,036 **Annual Vehicle Revenue Miles (VRM)**
 6,666 **Annual Vehicle Revenue Hours (VRH)**

Database Information

NTDID: 20201
 Reporter Type: Reduced Reporter

Asset Type: Tier II
 Sponsor NTDID:

Financial Information

Sources of Operating Funds Expended

Fare Revenues	\$0	0.0%
Local Funds	\$30,875	7.3%
State Funds	\$107,671	25.5%
Federal Assistance	\$211,034	50.0%
Other Funds	\$72,488	17.2%
Total Operating Funds Expended	\$422,068	100.0%

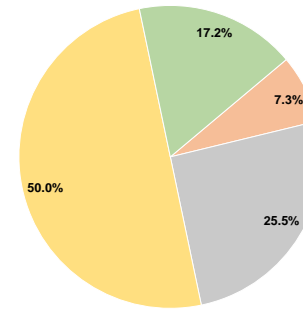
Sources of Capital Funds Expended

Fare Revenues	\$0
Local Funds	\$0
State Funds	\$0
Federal Assistance	\$0
Other Funds	\$0
Total Capital Funds Expended	\$0

Assets

Revenue Vehicles	8
Service Vehicles	0
Facilities	0

Operating Funding Sources



Performance Measure Targets - 2021

Performance Measure - Asset Type - Target % not in State of Good Repair
 Rolling Stock - CU - Cutaway - 13%

Modal Characteristics

Operation Characteristics

Vehicles Operated at Maximum Service

Mode	Directly Operated	Purchased Transportation	Operating Expenses	Fare Revenues	Uses of Capital Funds	Annual Unlinked Trips	Annual Vehicle Revenue Miles	Annual Vehicle Revenue Hours	Average Fleet Age in Years ^a
Bus	8	-	\$422,067	\$0	\$0	23,417	109,036	6,666	5.1
Total	8	-	\$422,067	\$0	\$0	23,417	109,036	6,666	

Performance Measures

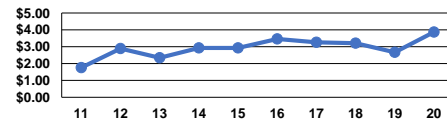
Service Efficiency

Mode	Operating Expenses per Vehicle Revenue Mile	Operating Expenses per Vehicle Revenue Hour
Bus	\$3.87	\$63.32
Total	\$3.87	\$63.32

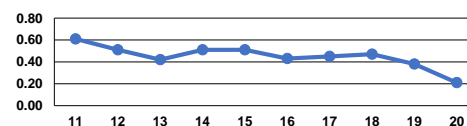
Service Effectiveness

Mode	Operating Expenses per Unlinked Passenger Trip	Unlinked Trips per Vehicle Revenue Mile	Unlinked Trips per Vehicle Revenue Hour
Bus	\$18.02	0.2	3.5
Total	\$18.02	0.2	3.5

Operating Expense per Vehicle Revenue Mile: Bus



Unlinked Passenger Trips per Vehicle Revenue Mile: Bus



Notes:

^aDemand Response - Taxi (DT) and non-dedicated fleets do not report fleet age data.