

General Information

Federally Recognized Tribal Statistical Areas

Oil Springs Reservation, NY - Cattaraugus Reservation, NY - Allegany Reservation, NY

Service Consumption

12,463 Annual Unlinked Trips (UPT)

Service Supplied

203,699 Annual Vehicle Revenue Miles (VRM)
 5,682 Annual Vehicle Revenue Hours (VRH)

Database Information

NTDID: 22929
 Reporter Type: Tribal Reporter

Asset Type:
 Sponsor NTDID:

Tier II

Assets

Revenue Vehicles	6
Service Vehicles	0
Facilities	0

Financial Information

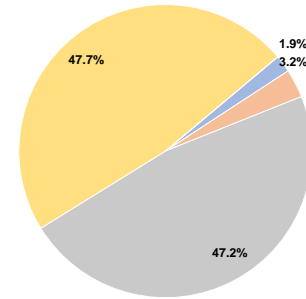
Sources of Operating Funds Expended

Fare Revenues	\$10,597	1.9%
Local Funds	\$17,609	3.2%
State Funds	\$263,819	47.2%
Federal Assistance	\$266,469	47.7%
Other Funds	\$0	0.0%
Total Operating Funds Expended	\$558,494	100.0%

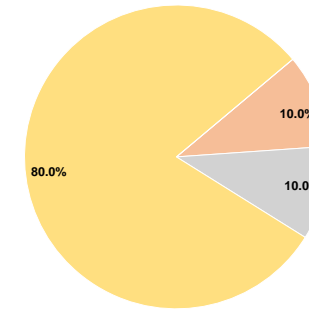
Sources of Capital Funds Expended

Fare Revenues	\$0	0.0%
Local Funds	\$21,667	10.0%
State Funds	\$21,668	10.0%
Federal Assistance	\$173,343	80.0%
Other Funds	\$0	0.0%
Total Capital Funds Expended	\$216,678	100.0%

Operating Funding Sources



Capital Funding Sources



Performance Measure Targets - 2021

Performance Measure - Asset Type - Target % not in State of Good Repair
 Rolling Stock - CU - Cutaway - 50%

Modal Characteristics

Operation Characteristics

Vehicles Operated at Maximum Service

Mode	Directly Operated	Purchased Transportation	Operating Expenses	Fare Revenues	Uses of Capital Funds	Annual Unlinked Trips	Annual Vehicle Revenue Miles	Annual Vehicle Revenue Hours	Average Fleet Age in Years ^a
Bus	-	2	\$558,494	\$10,597	\$216,678	12,463	203,699	5,682	2.0
Total	-	2	\$558,494	\$10,597	\$216,678	12,463	203,699	5,682	

Performance Measures

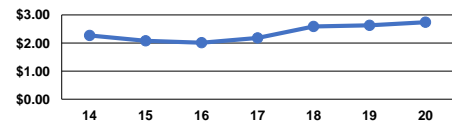
Service Efficiency

Mode	Operating Expenses per Vehicle Revenue Mile	Operating Expenses per Vehicle Revenue Hour
Bus	\$2.74	\$98.29
Total	\$2.74	\$98.29

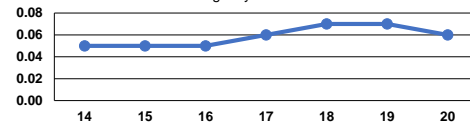
Service Effectiveness

Mode	Operating Expenses per Unlinked Passenger Trip	Unlinked Trips per Vehicle Revenue Mile	Unlinked Trips per Vehicle Revenue Hour
Bus	\$44.81	0.1	2.2
Total	\$44.81	0.1	2.2

Operating Expense per Vehicle Revenue Mile: Agency Total



Unlinked Passenger Trips per Vehicle Revenue Mile: Agency Total



Notes:

^aDemand Response - Taxi (DT) and non-dedicated fleets do not report fleet age data.