

General Information

Urbanized Area (UZA) Statistics - 2010 Census

Fredericksburg, VA
 78 **Square Miles**
 141,238 **Population**
 231 **Pop. Rank out of 498 UZAs**

Other UZAs Served

0 Virginia Non-UZA, 8 Washington, DC-VA-MD

Service Area Statistics

242 **Square Miles**
 113,716 **Population**

Service Consumption

230,263 **Annual Unlinked Trips (UPT)**

Service Supplied

639,434 **Annual Vehicle Revenue Miles (VRM)**
 44,153 **Annual Vehicle Revenue Hours (VRH)**

Database Information

NTDID: 30079 **Asset Type:** Tier II
Reporter Type: Reduced Reporter **Sponsor NTDID:** 3R06

Financial Information

Sources of Operating Funds Expended

Fare Revenues	\$190,311	3.7%
Local Funds	\$1,641,050	31.7%
State Funds	\$812,363	15.7%
Federal Assistance	\$2,517,199	48.6%
Other Funds	\$22,325	0.4%
Total Operating Funds Expended	\$5,183,248	100.0%

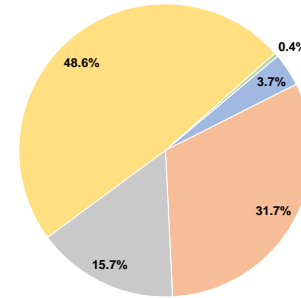
Sources of Capital Funds Expended

Fare Revenues	\$50,680	5.8%
Local Funds	\$0	0.0%
State Funds	\$136,720	15.7%
Federal Assistance	\$683,604	78.5%
Other Funds	\$0	0.0%
Total Capital Funds Expended	\$871,004	100.0%

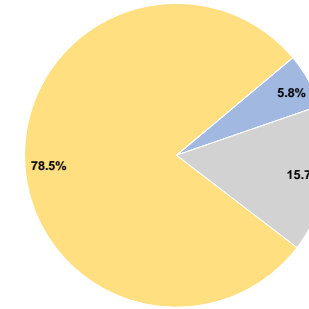
Assets

Revenue Vehicles	30
Service Vehicles	6
Facilities	3

Operating Funding Sources



Capital Funding Sources



Performance Measure Targets - 2021

- Performance Measure - Asset Type - Target % not in State of Good Repair
- Equipment - Automobiles - 25%
- Equipment - Trucks and other Rubber Tire Vehicles - 25%
- Facility - Administrative / Maintenance Facilities - 10%
- Facility - Passenger / Parking Facilities - 10%
- Rolling Stock - AB - Articulated Bus - 15%
- Rolling Stock - BR - Over-the-road Bus - 15%
- Rolling Stock - BU - Bus - 10%
- Rolling Stock - CU - Cutaway - 10%
- Rolling Stock - MV - Minivan - 25%
- Rolling Stock - VN - Van - 25%

Modal Characteristics

Operation Characteristics

Vehicles Operated at Maximum Service

Mode	Directly Operated	Purchased Transportation	Operating Expenses	Fare Revenues	Uses of Capital Funds	Annual Unlinked Trips	Annual Vehicle Revenue Miles	Annual Vehicle Revenue Hours	Average Fleet Age in Years ^a
Bus	21	-	\$5,183,248	\$240,991	\$871,004	230,263	639,434	44,153	3.7
Total	21	-	\$5,183,248	\$240,991	\$871,004	230,263	639,434	44,153	

Performance Measures

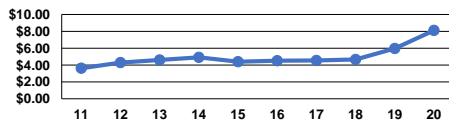
Service Efficiency

Mode	Operating Expenses per Vehicle Revenue Mile	Operating Expenses per Vehicle Revenue Hour
Bus	\$8.11	\$117.39
Total	\$8.11	\$117.39

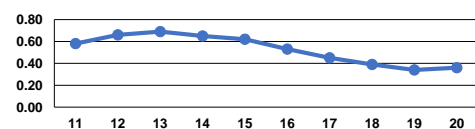
Service Effectiveness

Mode	Operating Expenses per Unlinked Passenger Trip	Unlinked Trips per Vehicle Revenue Mile	Unlinked Trips per Vehicle Revenue Hour
Bus	\$22.51	0.4	5.2
Total	\$22.51	0.4	5.2

Operating Expense per Vehicle Revenue Mile: Bus



Unlinked Passenger Trips per Vehicle Revenue Mile: Bus



Notes:

^aDemand Response - Taxi (DT) and non-dedicated fleets do not report fleet age data.