

General Information

Urbanized Area (UZA) Statistics - 2010 Census

Morgantown, WV
 37 Square Miles
 70,350 Population
 393 Pop. Rank out of 498 UZAs

Other UZAs Served

0 West Virginia Non-UZA

Service Area Statistics

293 Square Miles
 91,576 Population

Service Consumption

727,778 Annual Unlinked Trips (UPT)

Service Supplied

1,442,104 Annual Vehicle Revenue Miles (VRM)
 76,664 Annual Vehicle Revenue Hours (VRH)

Database Information

NTDID: 30089
 Reporter Type: Reduced Reporter
 Asset Type: Tier II
 Sponsor NTDID: 3R05

Financial Information

Sources of Operating Funds Expended

Fare Revenues	\$271,518	4.7%
Local Funds	\$2,267,752	39.0%
State Funds	\$0	0.0%
Federal Assistance	\$3,281,154	56.4%
Other Funds	\$0	0.0%
Total Operating Funds Expended	\$5,820,424	100.0%

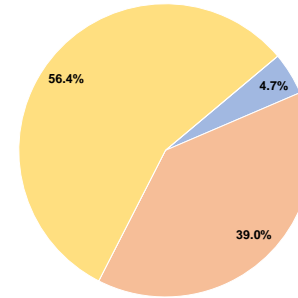
Sources of Capital Funds Expended

Fare Revenues	\$0	0.0%
Local Funds	\$417,558	44.0%
State Funds	\$0	0.0%
Federal Assistance	\$532,060	56.0%
Other Funds	\$0	0.0%
Total Capital Funds Expended	\$949,618	100.0%

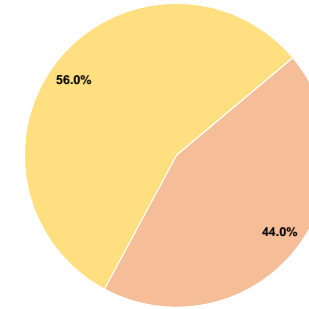
Assets

Revenue Vehicles	45
Service Vehicles	4
Facilities	1

Operating Funding Sources



Capital Funding Sources



Performance Measure Targets - 2021

- Performance Measure - Asset Type - Target % not in State of Good Repair
- Equipment - Automobiles - 5%
- Equipment - Trucks and other Rubber Tire Vehicles - 5%
- Facility - Administrative / Maintenance Facilities - 0%
- Facility - Passenger / Parking Facilities - 0%
- Rolling Stock - AO - Automobile - 10%
- Rolling Stock - BU - Bus - 10%
- Rolling Stock - CU - Cutaway - 10%
- Rolling Stock - MV - Minivan - 10%
- Rolling Stock - SV - Sports Utility Vehicle - 10%
- Rolling Stock - VN - Van - 10%

Modal Characteristics

Operation Characteristics

Vehicles Operated at Maximum Service

Mode	Directly Operated	Purchased Transportation	Operating Expenses	Fare Revenues	Uses of Capital Funds	Annual Unlinked Trips	Annual Vehicle Revenue Miles	Annual Vehicle Revenue Hours	Average Fleet Age in Years ^a
Demand Response	2	-	\$58,978	\$12,675	\$11,109	1,123	14,920	1,046	2.8
Bus	26	-	\$5,761,446	\$258,843	\$938,509	726,655	1,427,184	75,618	6.4
Total	28	-	\$5,820,424	\$271,518	\$949,618	727,778	1,442,104	76,664	

Performance Measures

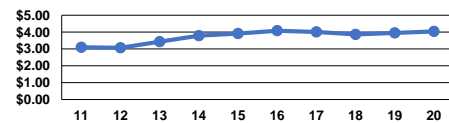
Service Efficiency

Mode	Operating Expenses per Vehicle Revenue Mile	Operating Expenses per Vehicle Revenue Hour
Demand Response	\$3.95	\$56.38
Bus	\$4.04	\$76.19
Total	\$4.04	\$75.92

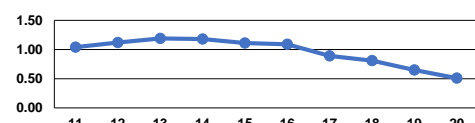
Service Effectiveness

Mode	Operating Expenses per Unlinked Passenger Trip	Unlinked Trips per Vehicle Revenue Mile	Unlinked Trips per Vehicle Revenue Hour
Demand Response	\$52.52	0.1	1.1
Bus	\$7.93	0.5	9.6
Total	\$8.00	0.5	9.5

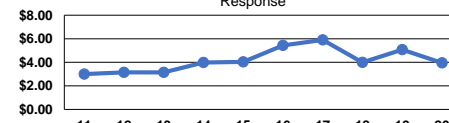
Operating Expense per Vehicle Revenue Mile: Bus



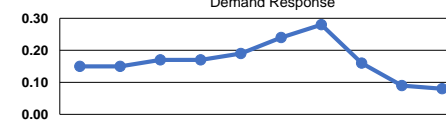
Unlinked Passenger Trips per Vehicle Revenue Mile: Bus



Operating Expense per Vehicle Revenue Mile: Demand Response



Unlinked Passenger Trips per Vehicle Revenue Mile: Demand Response



Notes:

^aDemand Response - Taxi (DT) and non-dedicated fleets do not report fleet age data.