

General Information

Urbanized Area (UZA) Statistics - 2010 Census

Florence, SC
 71 Square Miles
 89,557 Population
 325 Pop. Rank out of 498 UZAs

Other UZAs Served

0 South Carolina Non-UZA

Service Area Statistics

1,865 Square Miles
 242,174 Population

Service Consumption

277,749 Annual Unlinked Trips (UPT)

Service Supplied

634,385 Annual Vehicle Revenue Miles (VRM)
 35,913 Annual Vehicle Revenue Hours (VRH)

Database Information

NTDID: 40056
 Reporter Type: Reduced Reporter
 Asset Type: Tier II
 Sponsor NTDID: 4R07

Financial Information

Sources of Operating Funds Expended

Fare Revenues	\$229,342	6.8%
Local Funds	\$686,472	20.4%
State Funds	\$298,594	8.9%
Federal Assistance	\$2,078,128	61.7%
Other Funds	\$76,037	2.3%
Total Operating Funds Expended	\$3,368,573	100.0%

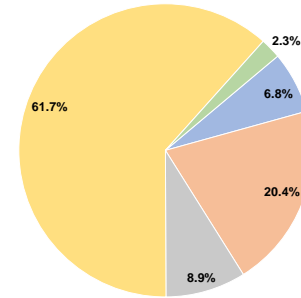
Sources of Capital Funds Expended

Fare Revenues	\$0	0.0%
Local Funds	\$0	0.0%
State Funds	\$263,920	33.9%
Federal Assistance	\$515,456	66.1%
Other Funds	\$0	0.0%
Total Capital Funds Expended	\$779,376	100.0%

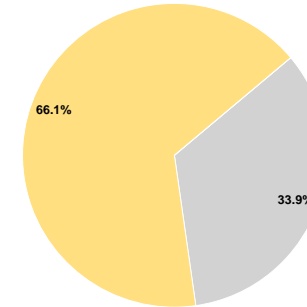
Assets

Revenue Vehicles	37
Service Vehicles	3
Facilities	2

Operating Funding Sources



Capital Funding Sources



Performance Measure Targets - 2021

- Performance Measure - Asset Type - Target % not in State of Good Repair
- Equipment - Automobiles - 30%
- Equipment - Trucks and other Rubber Tire Vehicles - 30%
- Facility - Administrative / Maintenance Facilities - 0%
- Facility - Passenger / Parking Facilities - 0%
- Rolling Stock - BR - Over-the-road Bus - 15%
- Rolling Stock - BU - Bus - 15%
- Rolling Stock - CU - Cutaway - 30%
- Rolling Stock - MV - Minivan - 20%
- Rolling Stock - VN - Van - 20%

Modal Characteristics

Operation Characteristics

Vehicles Operated at Maximum Service

Mode	Directly Operated	Purchased Transportation	Operating Expenses	Fare Revenues	Uses of Capital Funds	Annual Unlinked Trips	Annual Vehicle Revenue Miles	Annual Vehicle Revenue Hours	Average Fleet Age in Years ^a
Demand Response	4	-	\$161,692	\$6,283	\$0	5,196	27,776	2,040	7.3
Bus	25	-	\$3,206,881	\$223,059	\$779,376	272,553	606,609	33,873	6.7
Total	29	-	\$3,368,573	\$229,342	\$779,376	277,749	634,385	35,913	

Performance Measures

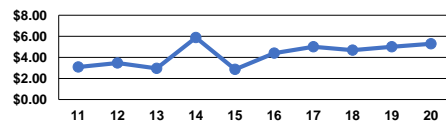
Service Efficiency

Mode	Operating Expenses per Vehicle Revenue Mile	Operating Expenses per Vehicle Revenue Hour
Demand Response	\$5.82	\$79.26
Bus	\$5.29	\$94.67
Total	\$5.31	\$93.80

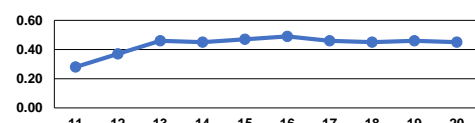
Service Effectiveness

Mode	Operating Expenses per Unlinked Passenger Trip	Unlinked Trips per Vehicle Revenue Mile	Unlinked Trips per Vehicle Revenue Hour
Demand Response	\$31.12	0.2	2.5
Bus	\$11.77	0.4	8.0
Total	\$12.13	0.4	7.7

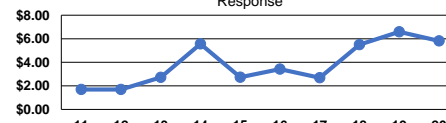
Operating Expense per Vehicle Revenue Mile: Bus



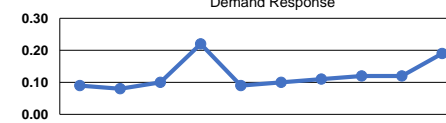
Unlinked Passenger Trips per Vehicle Revenue Mile: Bus



Operating Expense per Vehicle Revenue Mile: Demand Response



Unlinked Passenger Trips per Vehicle Revenue Mile: Demand Response



Notes:

^aDemand Response - Taxi (DT) and non-dedicated fleets do not report fleet age data.