

**General Information**

**Urbanized Area (UZA) Statistics - 2010 Census**

San Juan, PR  
867 **Square Miles**  
2,148,346 **Population**  
21 **Pop. Rank out of 498 UZAs**

**Service Area Statistics**

10 **Square Miles**  
17,603 **Population**

**Service Consumption**

99,250 **Annual Unlinked Trips (UPT)**

**Service Supplied**

20,383 **Annual Vehicle Revenue Miles (VRM)**  
4,656 **Annual Vehicle Revenue Hours (VRH)**

**Database Information**

NTDID: 40126  
Reporter Type: Reduced Reporter

Asset Type: Tier II  
Sponsor NTDID: 4R09

**Assets**  
Revenue Vehicles: 5  
Service Vehicles: 0  
Facilities: 3

**Financial Information**

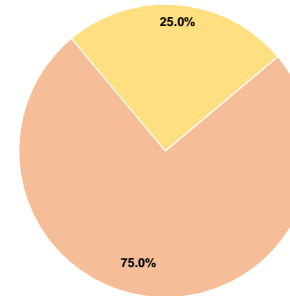
**Sources of Operating Funds Expended**

Fare Revenues	\$0	0.0%
Local Funds	\$313,257	75.0%
State Funds	\$0	0.0%
Federal Assistance	\$104,218	25.0%
Other Funds	\$0	0.0%
<b>Total Operating Funds Expended</b>	<b>\$417,475</b>	<b>100.0%</b>

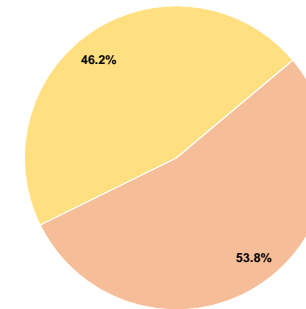
**Sources of Capital Funds Expended**

Fare Revenues	\$0	0.0%
Local Funds	\$14,502	53.8%
State Funds	\$0	0.0%
Federal Assistance	\$12,441	46.2%
Other Funds	\$0	0.0%
<b>Total Capital Funds Expended</b>	<b>\$26,943</b>	<b>100.0%</b>

**Operating Funding Sources**



**Capital Funding Sources**



**Performance Measure Targets - 2021**

Performance Measure - Asset Type - Target % not in State of Good Repair  
Equipment - Automobiles - 49%  
Equipment - Trucks and other Rubber Tire Vehicles - 38%  
Facility - Administrative / Maintenance Facilities - 9%  
Facility - Passenger / Parking Facilities - 12%  
Rolling Stock - AO - Automobile - 8%  
Rolling Stock - BU - Bus - 17%  
Rolling Stock - CU - Cutaway - 15%  
Rolling Stock - FB - Ferryboat - 0%  
Rolling Stock - MV - Minivan - 100%  
Rolling Stock - VN - Van - 30%

**Modal Characteristics**

**Operation Characteristics**

**Vehicles Operated at Maximum Service**

Mode	Directly Operated	Purchased Transportation	Operating Expenses	Fare Revenues	Uses of Capital Funds	Annual Unlinked Trips	Annual Vehicle Revenue Miles	Annual Vehicle Revenue Hours	Average Fleet Age in Years <sup>a</sup>
Demand Response	3	-	\$170,501	\$0	\$1,394	25,411	12,580	2,264	11.7
Bus	2	-	\$246,974	\$0	\$25,549	73,839	7,803	2,392	15.0
<b>Total</b>	<b>5</b>	<b>-</b>	<b>\$417,475</b>	<b>\$0</b>	<b>\$26,943</b>	<b>99,250</b>	<b>20,383</b>	<b>4,656</b>	

**Performance Measures**

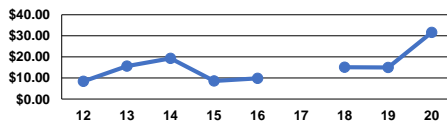
**Service Efficiency**

Mode	Operating Expenses per Vehicle Revenue Mile	Operating Expenses per Vehicle Revenue Hour
Demand Response	\$13.55	\$75.31
Bus	\$31.65	\$103.25
<b>Total</b>	<b>\$20.48</b>	<b>\$89.66</b>

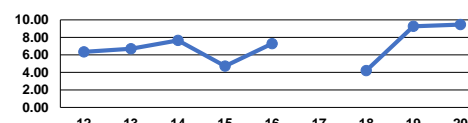
**Service Effectiveness**

Mode	Operating Expenses per Unlinked Passenger Trip	Unlinked Trips per Vehicle Revenue Mile	Unlinked Trips per Vehicle Revenue Hour
Demand Response	\$6.71	2.0	11.2
Bus	\$3.34	9.5	30.9
<b>Total</b>	<b>\$4.21</b>	<b>4.9</b>	<b>21.3</b>

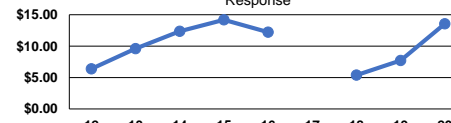
Operating Expense per Vehicle Revenue Mile: Bus



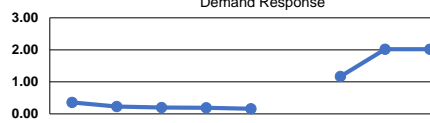
Unlinked Passenger Trips per Vehicle Revenue Mile: Bus



Operating Expense per Vehicle Revenue Mile: Demand Response



Unlinked Passenger Trips per Vehicle Revenue Mile: Demand Response



**Notes:**

<sup>a</sup>Demand Response - Taxi (DT) and non-dedicated fleets do not report fleet age data.