

General Information

Urbanized Area (UZA) Statistics - 2010 Census

Gainesville, GA
 126 **Square Miles**
 130,846 **Population**
 245 **Pop. Rank out of 498 UZAs**

Other UZAs Served

0 Georgia Non-UZA

Service Area Statistics

361 **Square Miles**
 199,999 **Population**

Service Consumption

109,415 **Annual Unlinked Trips (UPT)**

Service Supplied

264,608 **Annual Vehicle Revenue Miles (VRM)**
 18,374 **Annual Vehicle Revenue Hours (VRH)**

Database Information

NTDID: 40144
 Reporter Type: Reduced Reporter

Asset Type: Tier II
 Sponsor NTDID: 4R03

Financial Information

Sources of Operating Funds Expended

Fare Revenues	\$98,397	7.1%
Local Funds	\$325,972	23.5%
State Funds	\$0	0.0%
Federal Assistance	\$961,941	69.4%
Other Funds	\$0	0.0%
Total Operating Funds Expended	\$1,386,310	100.0%

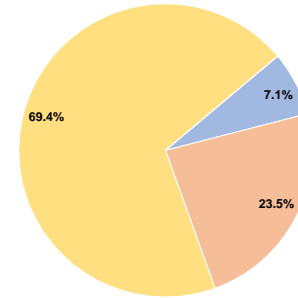
Sources of Capital Funds Expended

Fare Revenues	\$0	0.0%
Local Funds	\$42,618	10.0%
State Funds	\$42,617	10.0%
Federal Assistance	\$340,939	80.0%
Other Funds	\$0	0.0%
Total Capital Funds Expended	\$426,174	100.0%

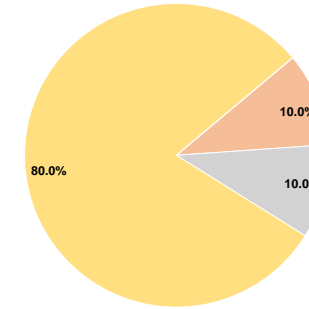
Assets

Revenue Vehicles	23
Service Vehicles	2
Facilities	2

Operating Funding Sources



Capital Funding Sources



Performance Measure Targets - 2021

Performance Measure - Asset Type - Target % not in State of Good Repair
 Equipment - Automobiles - 55%
 Equipment - Trucks and other Rubber Tire Vehicles - 50%
 Facility - Administrative / Maintenance Facilities - 25%
 Facility - Passenger / Parking Facilities - 10%
 Rolling Stock - BU - Bus - 18%
 Rolling Stock - CU - Cutaway - 8%
 Rolling Stock - VN - Van - 35%

Modal Characteristics

Operation Characteristics

Vehicles Operated at Maximum Service

Mode	Directly Operated	Purchased Transportation	Operating Expenses	Fare Revenues	Uses of Capital Funds	Annual Unlinked Trips	Annual Vehicle Revenue Miles	Annual Vehicle Revenue Hours	Average Fleet Age in Years ^a
Demand Response	5	-	\$542,063	\$37,011	\$0	9,800	105,452	6,872	4.7
Bus	6	-	\$844,247	\$61,386	\$426,174	99,615	159,156	11,502	2.3
Total	11	-	\$1,386,310	\$98,397	\$426,174	109,415	264,608	18,374	

Performance Measures

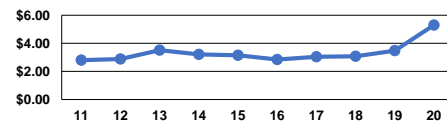
Service Efficiency

Mode	Operating Expenses per Vehicle Revenue Mile	Operating Expenses per Vehicle Revenue Hour
Demand Response	\$5.14	\$78.88
Bus	\$5.30	\$73.40
Total	\$5.24	\$75.45

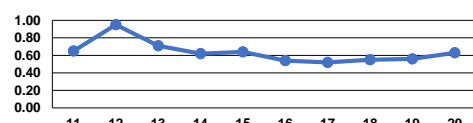
Service Effectiveness

Mode	Operating Expenses per Unlinked Passenger Trip	Unlinked Trips per Vehicle Revenue Mile	Unlinked Trips per Vehicle Revenue Hour
Demand Response	\$55.31	0.1	1.4
Bus	\$8.48	0.6	8.7
Total	\$12.67	0.4	6.0

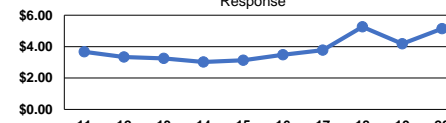
Operating Expense per Vehicle Revenue Mile: Bus



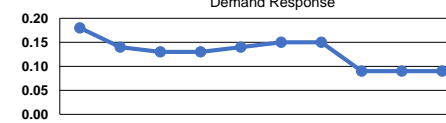
Unlinked Passenger Trips per Vehicle Revenue Mile: Bus



Operating Expense per Vehicle Revenue Mile: Demand Response



Unlinked Passenger Trips per Vehicle Revenue Mile: Demand Response



Notes:

^aDemand Response - Taxi (DT) and non-dedicated fleets do not report fleet age data.