

General Information

Urbanized Area (UZA) Statistics - 2010 Census

Spring Hill, FL
115 **Square Miles**
148,220 **Population**
221 **Pop. Rank out of 498 UZAs**

Other UZAs Served

0 Florida Non-UZA

Service Area Statistics

89 **Square Miles**
116,315 **Population**

Service Consumption

143,841 **Annual Unlinked Trips (UPT)**

Service Supplied

595,099 **Annual Vehicle Revenue Miles (VRM)**
30,931 **Annual Vehicle Revenue Hours (VRH)**

Database Information

NTDID: 40146
Reporter Type: Reduced Reporter
Asset Type: Tier II
Sponsor NTDID:

Financial Information

Sources of Operating Funds Expended

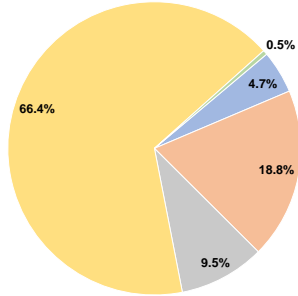
Fare Revenues	\$103,214	4.7%
Local Funds	\$411,654	18.8%
State Funds	\$207,131	9.5%
Federal Assistance	\$1,451,432	66.4%
Other Funds	\$10,852	0.5%
Total Operating Funds Expended	\$2,184,283	100.0%

Sources of Capital Funds Expended

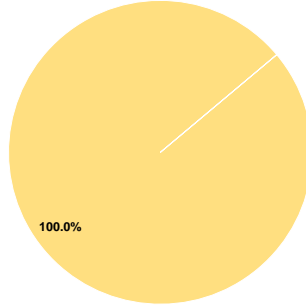
Fare Revenues	\$0	0.0%
Local Funds	\$0	0.0%
State Funds	\$0	0.0%
Federal Assistance	\$1,093,780	100.0%
Other Funds	\$0	0.0%
Total Capital Funds Expended	\$1,093,780	100.0%

Assets	
Revenue Vehicles	18
Service Vehicles	1
Facilities	1

Operating Funding Sources



Capital Funding Sources



Performance Measure Targets - 2021

Performance Measure - Asset Type - Target % not in State of Good Repair
Equipment - Automobiles - 0%
Facility - Administrative / Maintenance Facilities - 0%
Rolling Stock - BU - Bus - 10%
Rolling Stock - CU - Cutaway - 0%
Rolling Stock - MV - Minivan - 0%

Modal Characteristics

Operation Characteristics

Vehicles Operated at Maximum Service

Mode	Directly Operated	Purchased Transportation	Operating Expenses	Fare Revenues	Uses of Capital Funds	Annual Unlinked Trips	Annual Vehicle Revenue Miles	Annual Vehicle Revenue Hours	Average Fleet Age in Years ^a
Demand Response	-	3	\$518,000	\$19,938	\$90,409	9,131	79,186	4,153	3.6
Bus	-	7	\$1,666,283	\$83,276	\$1,003,371	134,710	515,913	26,778	6.8
Total	-	10	\$2,184,283	\$103,214	\$1,093,780	143,841	595,099	30,931	

Performance Measures

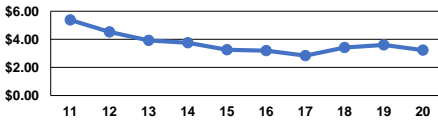
Service Efficiency

Mode	Operating Expenses per Vehicle Revenue Mile	Operating Expenses per Vehicle Revenue Hour
Demand Response	\$6.54	\$124.73
Bus	\$3.23	\$62.23
Total	\$3.67	\$70.62

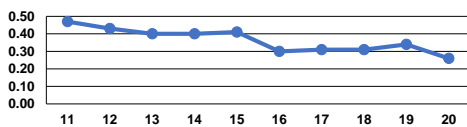
Service Effectiveness

Mode	Operating Expenses per Unlinked Passenger Trip	Unlinked Trips per Vehicle Revenue Mile	Unlinked Trips per Vehicle Revenue Hour
Demand Response	\$56.73	0.1	2.2
Bus	\$12.37	0.3	5.0
Total	\$15.19	0.2	4.7

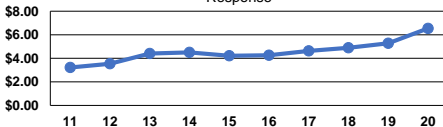
Operating Expense per Vehicle Revenue Mile: Bus



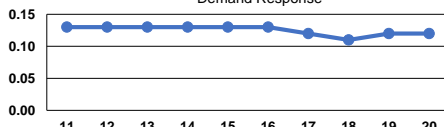
Unlinked Passenger Trips per Vehicle Revenue Mile: Bus



Operating Expense per Vehicle Revenue Mile: Demand Response



Unlinked Passenger Trips per Vehicle Revenue Mile: Demand Response



Notes:

^aDemand Response - Taxi (DT) and non-dedicated fleets do not report fleet age data.