

General Information

Urbanized Area (UZA) Statistics - 2010 Census

Jacksonville, NC
 71 Square Miles
 105,419 Population
 294 Pop. Rank out of 498 UZAs

Service Area Statistics

47 Square Miles
 72,447 Population

Service Consumption

114,276 Annual Unlinked Trips (UPT)

Service Supplied

371,425 Annual Vehicle Revenue Miles (VRM)
 24,941 Annual Vehicle Revenue Hours (VRH)

Database Information

NTDID: 40166
 Reporter Type: Reduced Reporter

Asset Type: Tier II
 Sponsor NTDID: 4R06

Financial Information

Sources of Operating Funds Expended

Fare Revenues	\$152,746	12.8%
Local Funds	\$136,250	11.4%
State Funds	\$126,891	10.6%
Federal Assistance	\$777,639	65.2%
Other Funds	\$0	0.0%
Total Operating Funds Expended	\$1,193,526	100.0%

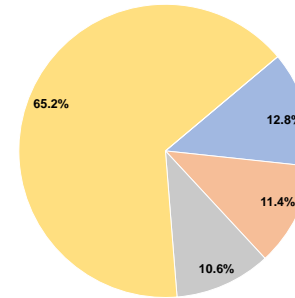
Sources of Capital Funds Expended

Fare Revenues	\$0	0.0%
Local Funds	\$44,382	10.6%
State Funds	\$0	0.0%
Federal Assistance	\$374,647	89.4%
Other Funds	\$0	0.0%
Total Capital Funds Expended	\$419,029	100.0%

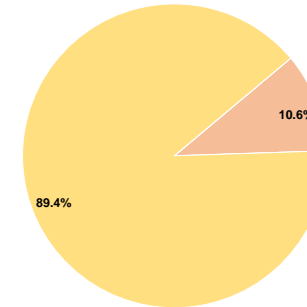
Assets

Revenue Vehicles	16
Service Vehicles	1
Facilities	2

Operating Funding Sources



Capital Funding Sources



Performance Measure Targets - 2021

- Performance Measure - Asset Type - Target % not in State of Good Repair
- Equipment - Automobiles - 20%
- Equipment - Trucks and other Rubber Tire Vehicles - 20%
- Facility - Administrative / Maintenance Facilities - 20%
- Facility - Passenger / Parking Facilities - 20%
- Rolling Stock - BU - Bus - 20%
- Rolling Stock - CU - Cutaway - 20%
- Rolling Stock - FB - Ferryboat - 20%
- Rolling Stock - MV - Minivan - 20%
- Rolling Stock - OR - Other - 20%
- Rolling Stock - SB - School Bus - 20%
- Rolling Stock - SV - Sports Utility Vehicle - 20%
- Rolling Stock - VN - Van - 20%

Modal Characteristics

Operation Characteristics

Vehicles Operated at Maximum Service

Mode	Directly Operated	Purchased Transportation	Operating Expenses	Fare Revenues	Uses of Capital Funds	Annual Unlinked Trips	Annual Vehicle Revenue Miles	Annual Vehicle Revenue Hours	Average Fleet Age in Years ^a
Demand Response	-	-	\$0 ¹	\$0	\$0 ¹	0	0	0	0.0
Bus	-	9	\$1,193,526	\$152,746	\$419,029	114,276	371,425	24,941	5.7
Total	-	9	\$1,193,526	\$152,746	\$419,029	114,276	371,425	24,941	

Performance Measures

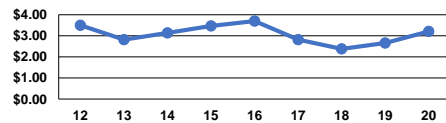
Service Efficiency

Mode	Operating Expenses per Vehicle Revenue Mile	Operating Expenses per Vehicle Revenue Hour
Demand Response	\$0.00	\$0.00
Bus	\$3.21	\$47.85
Total	\$3.21	\$47.85

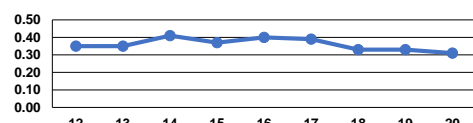
Service Effectiveness

Mode	Operating Expenses per Unlinked Passenger Trip	Unlinked Trips per Vehicle Revenue Mile	Unlinked Trips per Vehicle Revenue Hour
Demand Response	\$0.00	0.0	0.0
Bus	\$10.44	0.3	4.6
Total	\$10.44	0.3	4.6

Operating Expense per Vehicle Revenue Mile: Bus



Unlinked Passenger Trips per Vehicle Revenue Mile: Bus



Notes:

^aDemand Response - Taxi (DT) and non-dedicated fleets do not report fleet age data.

¹Excludes data for purchased transportation filed separately.

*This agency has a purchased transportation relationship in which they buy service from Onslow United Transit System (NTDID: 40227), and in which the data are captured in another report for mode DR/PT.

