

General Information

Urbanized Area (UZA) Statistics - 2010 Census

Charleston-North Charleston, SC
 293 Square Miles
 548,404 Population
 76 Pop. Rank out of 498 UZAs

Other UZAs Served

0 South Carolina Non-UZA

Service Area Statistics

2,800 Square Miles
 264,203 Population

Service Consumption

72,348 Annual Unlinked Trips (UPT)

Service Supplied

814,355 Annual Vehicle Revenue Miles (VRM)
 40,165 Annual Vehicle Revenue Hours (VRH)

Database Information

NTDID: 40206
 Reporter Type: Reduced Reporter

Asset Type: Tier II
 Sponsor NTDID: 4R07

Financial Information

Sources of Operating Funds Expended

Fare Revenues	\$109,408	4.8%
Local Funds	\$438,463	19.2%
State Funds	\$247,806	10.8%
Federal Assistance	\$1,489,037	65.2%
Other Funds	\$0	0.0%
Total Operating Funds Expended	\$2,284,714	100.0%

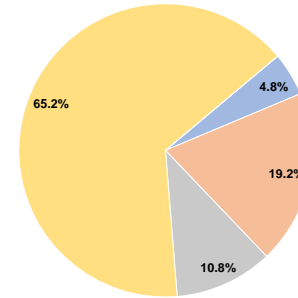
Sources of Capital Funds Expended

Fare Revenues	\$0	0.0%
Local Funds	\$44,913	5.4%
State Funds	\$100,513	12.1%
Federal Assistance	\$687,041	82.5%
Other Funds	\$0	0.0%
Total Capital Funds Expended	\$832,467	100.0%

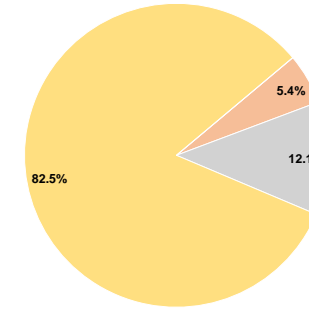
Assets

Revenue Vehicles	37
Service Vehicles	1
Facilities	1

Operating Funding Sources



Capital Funding Sources



Performance Measure Targets - 2021

- Performance Measure - Asset Type - Target % not in State of Good Repair
- Equipment - Automobiles - 30%
- Equipment - Trucks and other Rubber Tire Vehicles - 30%
- Facility - Administrative / Maintenance Facilities - 0%
- Facility - Passenger / Parking Facilities - 0%
- Rolling Stock - BR - Over-the-road Bus - 15%
- Rolling Stock - BU - Bus - 15%
- Rolling Stock - CU - Cutaway - 30%
- Rolling Stock - MV - Minivan - 20%
- Rolling Stock - VN - Van - 20%

Modal Characteristics

Operation Characteristics

Vehicles Operated at Maximum Service

Mode	Directly Operated	Purchased Transportation	Operating Expenses	Fare Revenues	Uses of Capital Funds	Annual Unlinked Trips	Annual Vehicle Revenue Miles	Annual Vehicle Revenue Hours	Average Fleet Age in Years ^a
Bus	24	-	\$2,284,714	\$109,408	\$832,467	72,348	814,355	40,165	3.2
Total	24	-	\$2,284,714	\$109,408	\$832,467	72,348	814,355	40,165	

Performance Measures

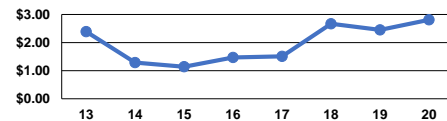
Service Efficiency

Mode	Operating Expenses per Vehicle Revenue Mile	Operating Expenses per Vehicle Revenue Hour
Bus	\$2.81	\$56.88
Total	\$2.81	\$56.88

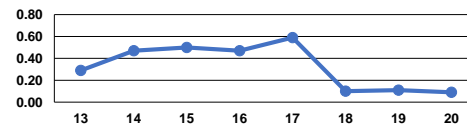
Service Effectiveness

Mode	Operating Expenses per Unlinked Passenger Trip	Unlinked Trips per Vehicle Revenue Mile	Unlinked Trips per Vehicle Revenue Hour
Bus	\$31.58	0.1	1.8
Total	\$31.58	0.1	1.8

Operating Expense per Vehicle Revenue Mile: Bus



Unlinked Passenger Trips per Vehicle Revenue Mile: Bus



Notes:

^aDemand Response - Taxi (DT) and non-dedicated fleets do not report fleet age data.