

General Information

Urbanized Area (UZA) Statistics - 2010 Census

Louisville/Jefferson County, KY-IN
 477 **Square Miles**
 972,546 **Population**
 43 **Pop. Rank out of 498 UZAs**

Other UZAs Served

0 Kentucky Non-UZA

Service Area Statistics

7 **Square Miles**
 8,082 **Population**

Service Consumption

12,180 **Annual Unlinked Trips (UPT)**

Service Supplied

29,997 **Annual Vehicle Revenue Miles (VRM)**
 2,304 **Annual Vehicle Revenue Hours (VRH)**

Database Information

NTDID: 40218 **Asset Type:** Tier II
Reporter Type: Reduced Reporter **Sponsor NTDID:**

Financial Information

Sources of Operating Funds Expended

Fare Revenues	\$6,176	5.4%
Local Funds	\$68,495	59.5%
State Funds	\$0	0.0%
Federal Assistance	\$40,356	35.1%
Other Funds	\$0	0.0%
Total Operating Funds Expended	\$115,027	100.0%

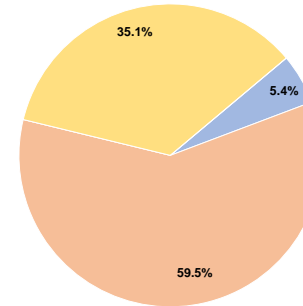
Sources of Capital Funds Expended

Fare Revenues	\$0
Local Funds	\$0
State Funds	\$0
Federal Assistance	\$0
Other Funds	\$0
Total Capital Funds Expended	\$0

Assets

Revenue Vehicles	3
Service Vehicles	0
Facilities	0

Operating Funding Sources



Performance Measure Targets - 2021

Performance Measure - Asset Type - Target % not in State of Good Repair
 Rolling Stock - CU - Cutaway - 0%

Modal Characteristics

Operation Characteristics

Vehicles Operated at Maximum Service

Mode	Directly Operated	Purchased Transportation	Operating Expenses	Fare Revenues	Uses of Capital Funds	Annual Unlinked Trips	Annual Vehicle Revenue Miles	Annual Vehicle Revenue Hours	Average Fleet Age in Years ^a
Bus	1	-	\$115,027	\$6,176	\$0	12,180	29,997	2,304	4.7
Total	1	-	\$115,027	\$6,176	\$0	12,180	29,997	2,304	

Performance Measures

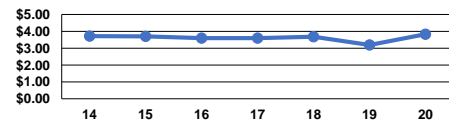
Service Efficiency

Mode	Operating Expenses per Vehicle Revenue Mile	Operating Expenses per Vehicle Revenue Hour
Bus	\$3.83	\$49.92
Total	\$3.83	\$49.92

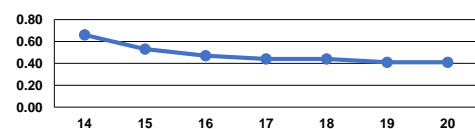
Service Effectiveness

Mode	Operating Expenses per Unlinked Passenger Trip	Unlinked Trips per Vehicle Revenue Mile	Unlinked Trips per Vehicle Revenue Hour
Bus	\$9.44	0.4	5.3
Total	\$9.44	0.4	5.3

Operating Expense per Vehicle Revenue Mile: Bus



Unlinked Passenger Trips per Vehicle Revenue Mile: Bus



Notes:

^aDemand Response - Taxi (DT) and non-dedicated fleets do not report fleet age data.