

General Information

Federally Recognized Tribal Statistical Areas

Red Cliff Reservation and Off-Reservation Trust Land, WI

Service Consumption

15,579 Annual Unlinked Trips (UPT)

Service Supplied

42,249 Annual Vehicle Revenue Miles (VRM)
 1,941 Annual Vehicle Revenue Hours (VRH)

Database Information

NTDID: 50013
 Reporter Type: Tribal Reporter

Asset Type: 5R06
 Sponsor NTDID:

Tier II
 5R06

Assets
 Revenue Vehicles 4
 Service Vehicles 0
 Facilities 0

Financial Information

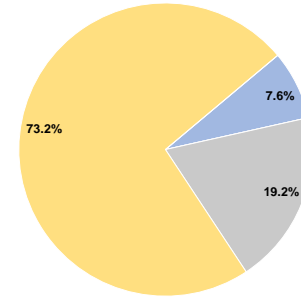
Sources of Operating Funds Expended

Fare Revenues	\$19,883	7.6%
Local Funds	\$0	0.0%
State Funds	\$50,139	19.2%
Federal Assistance	\$191,057	73.2%
Other Funds	\$0	0.0%
Total Operating Funds Expended	\$261,079	100.0%

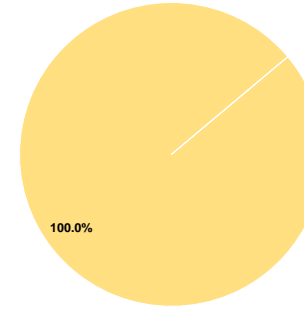
Sources of Capital Funds Expended

Fare Revenues	\$0	0.0%
Local Funds	\$0	0.0%
State Funds	\$0	0.0%
Federal Assistance	\$70,639	100.0%
Other Funds	\$0	0.0%
Total Capital Funds Expended	\$70,639	100.0%

Operating Funding Sources



Capital Funding Sources



Performance Measure Targets - 2021

- Performance Measure - Asset Type - Target % not in State of Good Repair
- Equipment - Automobiles - 33%
- Equipment - Trucks and other Rubber Tire Vehicles - 29%
- Facility - Administrative / Maintenance Facilities - 10%
- Facility - Passenger / Parking Facilities - 10%
- Rolling Stock - AO - Automobile - 77%
- Rolling Stock - BU - Bus - 44%
- Rolling Stock - CU - Cutaway - 47%
- Rolling Stock - MV - Minivan - 51%
- Rolling Stock - SB - School Bus - 0%
- Rolling Stock - VN - Van - 27%

Modal Characteristics

Operation Characteristics

Vehicles Operated at Maximum Service

Mode	Directly Operated	Purchased Transportation	Operating Expenses	Fare Revenues	Uses of Capital Funds	Annual Unlinked Trips	Annual Vehicle Revenue Miles	Annual Vehicle Revenue Hours	Average Fleet Age in Years ^a
Demand Response	3	-	\$220,896	\$19,883	\$70,639	15,579	42,249	1,941	3.8
Total	3	-	\$220,896	\$19,883	\$70,639	15,579	42,249	1,941	

Performance Measures

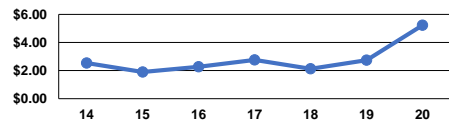
Service Efficiency

Mode	Operating Expenses per Vehicle Revenue Mile	Operating Expenses per Vehicle Revenue Hour
Demand Response	\$5.23	\$113.81
Total	\$5.23	\$113.81

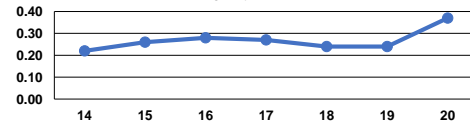
Service Effectiveness

Mode	Operating Expenses per Unlinked Passenger Trip	Unlinked Trips per Vehicle Revenue Mile	Unlinked Trips per Vehicle Revenue Hour
Demand Response	\$14.18	0.4	8.0
Total	\$14.18	0.4	8.0

Operating Expense per Vehicle Revenue Mile: Agency Total



Unlinked Passenger Trips per Vehicle Revenue Mile: Agency Total



Notes:

^aDemand Response - Taxi (DT) and non-dedicated fleets do not report fleet age data.