

General Information

Urbanized Area (UZA) Statistics - 2010 Census

Chicago, IL-IN  
2,443 Square Miles  
8,608,208 Population  
3 Pop. Rank out of 498 UZAs

Service Area Statistics

550 Square Miles  
216,180 Population

Service Consumption

22,348 Annual Unlinked Trips (UPT)

Service Supplied

185,262 Annual Vehicle Revenue Miles (VRM)  
16,551 Annual Vehicle Revenue Hours (VRH)

Database Information

NTDID: 50167  
Reporter Type: Reduced Reporter

Asset Type: Tier II  
Sponsor NTDID: A0015

Sources of Operating Funds Expended

Fare Revenues	\$56,883	6.8%
Local Funds	\$211,412	25.3%
State Funds	\$164,056	19.6%
Federal Assistance	\$380,887	45.6%
Other Funds	\$22,046	2.6%
Total Operating Funds Expended	\$835,284	100.0%

Sources of Capital Funds Expended

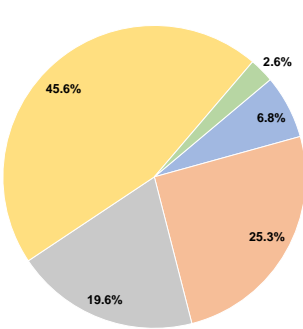
Fare Revenues	\$0
Local Funds	\$0
State Funds	\$0
Federal Assistance	\$0
Other Funds	\$0
Total Capital Funds Expended	\$0

Assets

Revenue Vehicles	18
Service Vehicles	0
Facilities	0

Financial Information

Operating Funding Sources



Performance Measure Targets - 2021

Performance Measure - Asset Type - Target % not in State of Good Repair  
Equipment - Trucks and other Rubber Tire Vehicles - 50%  
Facility - Administrative / Maintenance Facilities - 0%  
Facility - Passenger / Parking Facilities - 0%  
Rolling Stock - BR - Over-the-road Bus - 0%  
Rolling Stock - BU - Bus - 0%  
Rolling Stock - CU - Cutaway - 10%  
Rolling Stock - MV - Minivan - 100%  
Rolling Stock - VN - Van - 100%

Modal Characteristics

Operation Characteristics

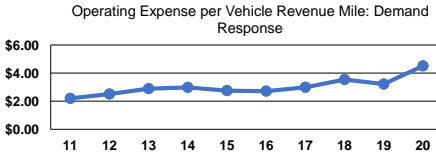
Vehicles Operated at Maximum Service

Mode	Directly Operated	Purchased Transportation	Operating Expenses	Fare Revenues	Uses of Capital Funds	Annual Unlinked Trips	Annual Vehicle Revenue Miles	Annual Vehicle Revenue Hours	Average Fleet Age in Years <sup>a</sup>
Demand Response	18	-	\$835,284	\$56,883	\$0	22,348	185,262	16,551	2.3
Total	18	-	\$835,284	\$56,883	\$0	22,348	185,262	16,551	

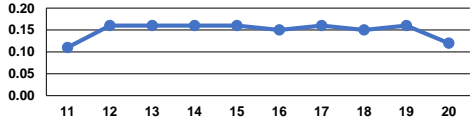
Performance Measures

Service Efficiency

Mode	Operating Expenses per Vehicle Revenue Mile	Operating Expenses per Vehicle Revenue Hour
Demand Response	\$4.51	\$50.47
Total	\$4.51	\$50.47



Unlinked Passenger Trips per Vehicle Revenue Mile: Demand Response



Service Effectiveness

Mode	Operating Expenses per Unlinked Passenger Trip	Unlinked Trips per Vehicle Revenue Mile	Unlinked Trips per Vehicle Revenue Hour
Demand Response	\$37.38	0.1	1.4
Total	\$37.38	0.1	1.4

Notes:

<sup>a</sup>Demand Response - Taxi (DT) and non-dedicated fleets do not report fleet age data.