

General Information

Urbanized Area (UZA) Statistics - 2010 Census

Chicago, IL-IN
 2,443 Square Miles
 8,608,208 Population
 3 Pop. Rank out of 498 UZAs

Other UZAs Served

0 Indiana Non-UZA

Service Area Statistics

16 Square Miles
 31,730 Population

Service Consumption

96,050 Annual Unlinked Trips (UPT)

Service Supplied

290,445 Annual Vehicle Revenue Miles (VRM)
 17,451 Annual Vehicle Revenue Hours (VRH)

Database Information

NTDID: 50183
 Reporter Type: Reduced Reporter

Asset Type: Tier II
 Sponsor NTDID: A0015

Financial Information

Sources of Operating Funds Expended

Fare Revenues	\$229,154	22.1%
Local Funds	\$0	0.0%
State Funds	\$265,130	25.6%
Federal Assistance	\$541,037	52.3%
Other Funds	\$0	0.0%
Total Operating Funds Expended	\$1,035,321	100.0%

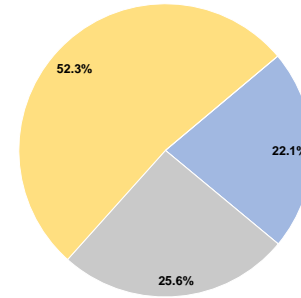
Sources of Capital Funds Expended

Fare Revenues	\$0	0.0%
Local Funds	\$0	0.0%
State Funds	\$0	0.0%
Federal Assistance	\$138,000	100.0%
Other Funds	\$0	0.0%
Total Capital Funds Expended	\$138,000	100.0%

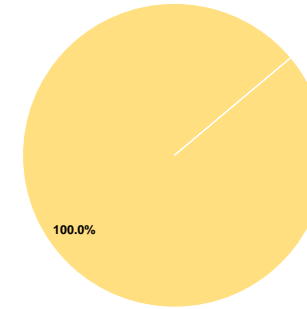
Assets

Revenue Vehicles	14
Service Vehicles	0
Facilities	3

Operating Funding Sources



Capital Funding Sources



Performance Measure Targets - 2021

Performance Measure - Asset Type - Target % not in State of Good Repair
 Equipment - Trucks and other Rubber Tire Vehicles - 50%
 Facility - Administrative / Maintenance Facilities - 0%
 Facility - Passenger / Parking Facilities - 0%
 Rolling Stock - BR - Over-the-road Bus - 0%
 Rolling Stock - BU - Bus - 0%
 Rolling Stock - CU - Cutaway - 10%
 Rolling Stock - MV - Minivan - 100%
 Rolling Stock - VN - Van - 100%

Modal Characteristics

Operation Characteristics

Vehicles Operated at Maximum Service

Mode	Directly Operated	Purchased Transportation	Operating Expenses	Fare Revenues	Uses of Capital Funds	Annual Unlinked Trips	Annual Vehicle Revenue Miles	Annual Vehicle Revenue Hours	Average Fleet Age in Years ^a
Commuter Bus	-	7	\$635,669	\$107,504	\$138,000	19,817	112,005	4,942	7.6
Bus	-	6	\$399,652	\$121,650	\$0	76,233	178,440	12,509	2.5
Total	-	13	\$1,035,321	\$229,154	\$138,000	96,050	290,445	17,451	

Performance Measures

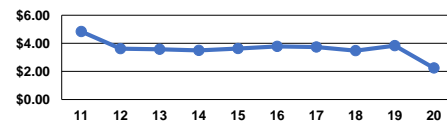
Service Efficiency

Mode	Operating Expenses per Vehicle Revenue Mile	Operating Expenses per Vehicle Revenue Hour
Commuter Bus	\$5.68	\$128.63
Bus	\$2.24	\$31.95
Total	\$3.56	\$59.33

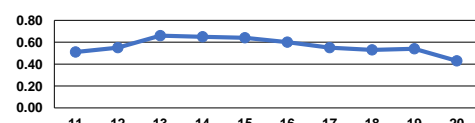
Service Effectiveness

Mode	Operating Expenses per Unlinked Passenger Trip	Unlinked Trips per Vehicle Revenue Mile	Unlinked Trips per Vehicle Revenue Hour
Commuter Bus	\$32.08	0.2	4.0
Bus	\$5.24	0.4	6.1
Total	\$10.78	0.3	5.5

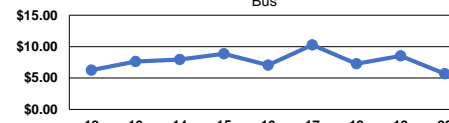
Operating Expense per Vehicle Revenue Mile: Bus



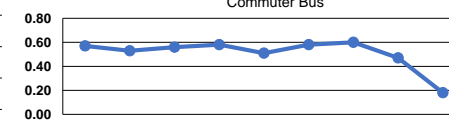
Unlinked Passenger Trips per Vehicle Revenue Mile: Bus



Operating Expense per Vehicle Revenue Mile: Commuter Bus



Unlinked Passenger Trips per Vehicle Revenue Mile: Commuter Bus



Notes:

^aDemand Response - Taxi (DT) and non-dedicated fleets do not report fleet age data.