

**General Information**

**Urbanized Area (UZA) Statistics - 2010 Census**

Huntington, WV-KY-OH  
 130 Square Miles  
 202,637 Population  
 178 Pop. Rank out of 498 UZAs

**Other UZAs Served**

0 Ohio Non-UZA

**Service Area Statistics**

67 Square Miles  
 113,532 Population

**Service Consumption**

16,673 Annual Unlinked Trips (UPT)

**Service Supplied**

209,320 Annual Vehicle Revenue Miles (VRM)  
 12,565 Annual Vehicle Revenue Hours (VRH)

**Database Information**

NTDID: 50186  
 Reporter Type: Reduced Reporter  
 Asset Type: Tier II  
 Sponsor NTDID:

**Financial Information**

**Sources of Operating Funds Expended**

Fare Revenues	\$75,351	9.1%
Local Funds	\$43,340	5.3%
State Funds	\$57,728	7.0%
Federal Assistance	\$646,855	78.5%
Other Funds	\$1,000	0.1%
<b>Total Operating Funds Expended</b>	<b>\$824,274</b>	<b>100.0%</b>

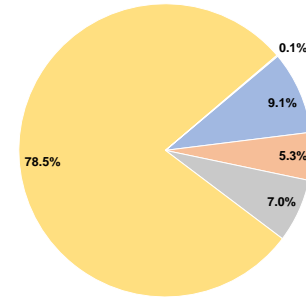
**Sources of Capital Funds Expended**

Fare Revenues	\$0	0.0%
Local Funds	\$23,406	20.0%
State Funds	\$0	0.0%
Federal Assistance	\$93,624	80.0%
Other Funds	\$0	0.0%
<b>Total Capital Funds Expended</b>	<b>\$117,030</b>	<b>100.0%</b>

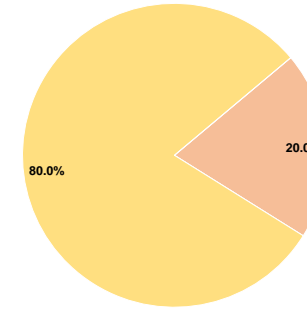
**Assets**

Revenue Vehicles	19
Service Vehicles	0
Facilities	1

**Operating Funding Sources**



**Capital Funding Sources**



**Performance Measure Targets - 2021**

Performance Measure - Asset Type - Target % not in State of Good Repair  
 Facility - Passenger / Parking Facilities - 0%  
 Rolling Stock - CU - Cutaway - 20%  
 Rolling Stock - MV - Minivan - 20%  
 Rolling Stock - SV - Sports Utility Vehicle - 20%  
 Rolling Stock - VN - Van - 20%

**Modal Characteristics**

**Operation Characteristics**

**Vehicles Operated at Maximum Service**

Mode	Directly Operated	Purchased Transportation	Operating Expenses	Fare Revenues	Uses of Capital Funds	Annual Unlinked Trips	Annual Vehicle Revenue Miles	Annual Vehicle Revenue Hours	Average Fleet Age in Years <sup>a</sup>
Demand Response	-	13	\$421,414	\$69,223	\$117,030	7,774	109,673	6,818	7.3
Bus	-	4	\$402,860	\$6,128	\$0	8,899	99,647	5,747	3.5
<b>Total</b>	<b>-</b>	<b>17</b>	<b>\$824,274</b>	<b>\$75,351</b>	<b>\$117,030</b>	<b>16,673</b>	<b>209,320</b>	<b>12,565</b>	

**Performance Measures**

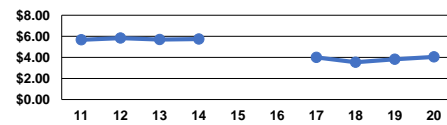
**Service Efficiency**

Mode	Operating Expenses per Vehicle Revenue Mile	Operating Expenses per Vehicle Revenue Hour
Demand Response	\$3.84	\$61.81
Bus	\$4.04	\$70.10
<b>Total</b>	<b>\$3.94</b>	<b>\$65.60</b>

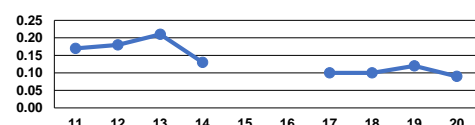
**Service Effectiveness**

Mode	Operating Expenses per Unlinked Passenger Trip	Unlinked Trips per Vehicle Revenue Mile	Unlinked Trips per Vehicle Revenue Hour
Demand Response	\$54.21	0.1	1.1
Bus	\$45.27	0.1	1.5
<b>Total</b>	<b>\$49.44</b>	<b>0.1</b>	<b>1.3</b>

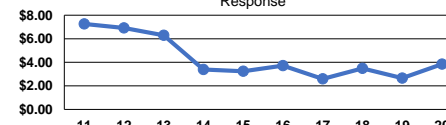
Operating Expense per Vehicle Revenue Mile: Bus



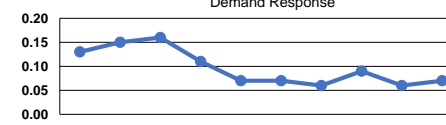
Unlinked Passenger Trips per Vehicle Revenue Mile: Bus



Operating Expense per Vehicle Revenue Mile: Demand Response



Unlinked Passenger Trips per Vehicle Revenue Mile: Demand Response



**Notes:**

<sup>a</sup>Demand Response - Taxi (DT) and non-dedicated fleets do not report fleet age data.