

General Information

Federally Recognized Tribal Statistical Areas

Kiowa-Comanche-Apache-Ft Sill Apache/Caddo-Wichita-Delaware joint-use OTSA, OK - Kiowa-Comanche-Apache-Fort Sill Apache OTSA, OK

Service Consumption

24,346 Annual Unlinked Trips (UPT)

Service Supplied

201,535 Annual Vehicle Revenue Miles (VRM)
 10,644 Annual Vehicle Revenue Hours (VRH)

Database Information

NTDID: 60005
 Reporter Type: Tribal Reporter

Asset Type:
 Sponsor NTDID:

Tier II

Assets

Revenue Vehicles	18
Service Vehicles	2
Facilities	1

Financial Information

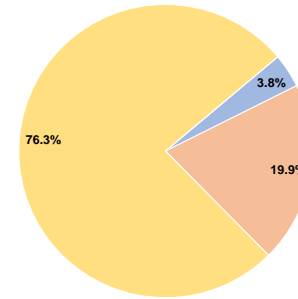
Sources of Operating Funds Expended

Fare Revenues	\$48,842	3.8%
Local Funds	\$259,373	19.9%
State Funds	\$0	0.0%
Federal Assistance	\$992,679	76.3%
Other Funds	\$0	0.0%
Total Operating Funds Expended	\$1,300,894	100.0%

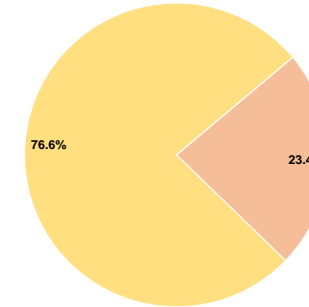
Sources of Capital Funds Expended

Fare Revenues	\$0	0.0%
Local Funds	\$83,425	23.4%
State Funds	\$0	0.0%
Federal Assistance	\$273,794	76.6%
Other Funds	\$0	0.0%
Total Capital Funds Expended	\$357,219	100.0%

Operating Funding Sources



Capital Funding Sources



Performance Measure Targets - 2021

Performance Measure - Asset Type - Target % not in State of Good Repair
 Equipment - Trucks and other Rubber Tire Vehicles - 0%
 Facility - Administrative / Maintenance Facilities - 0%
 Rolling Stock - MV - Minivan - 20%
 Rolling Stock - VN - Van - 29%

Modal Characteristics

Operation Characteristics

Vehicles Operated at Maximum Service

Mode	Directly Operated	Purchased Transportation	Operating Expenses	Fare Revenues	Uses of Capital Funds	Annual Unlinked Trips	Annual Vehicle Revenue Miles	Annual Vehicle Revenue Hours	Average Fleet Age in Years ^a
Demand Response	11	-	\$1,300,894	\$48,842	\$357,219	24,346	201,535	10,644	4.1
Total	11	-	\$1,300,894	\$48,842	\$357,219	24,346	201,535	10,644	

Performance Measures

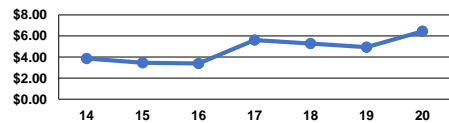
Service Efficiency

Mode	Operating Expenses per Vehicle Revenue Mile	Operating Expenses per Vehicle Revenue Hour
Demand Response	\$6.45	\$122.22
Total	\$6.45	\$122.22

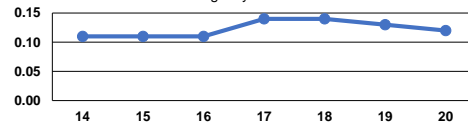
Service Effectiveness

Mode	Operating Expenses per Unlinked Passenger Trip	Unlinked Trips per Vehicle Revenue Mile	Unlinked Trips per Vehicle Revenue Hour
Demand Response	\$53.43	0.1	2.3
Total	\$53.43	0.1	2.3

Operating Expense per Vehicle Revenue Mile: Agency Total



Unlinked Passenger Trips per Vehicle Revenue Mile: Agency Total



Notes:

^aDemand Response - Taxi (DT) and non-dedicated fleets do not report fleet age data.